

**CNTN1 Antibody (Center)**  
**Affinity Purified Rabbit Polyclonal Antibody (Pab)**  
**Catalog # AP9490c****Specification**

---

**CNTN1 Antibody (Center) - Product Information**

Application	WB,E
Primary Accession	<a href="#">Q12860</a>
Other Accession	<a href="#">Q63198</a> , <a href="#">P12960</a> , <a href="#">Q28106</a>
Reactivity	Human
Predicted	Bovine, Mouse, Rat
Host	Rabbit
Clonality	Polyclonal
Isotype	Rabbit IgG
Calculated MW	113320
Antigen Region	635-662

**CNTN1 Antibody (Center) - Additional Information****Gene ID** 1272**Other Names**

Contactin-1, Glycoprotein gp135, Neural cell surface protein F3, CNTN1

**Target/Specificity**

This CNTN1 antibody is generated from rabbits immunized with a KLH conjugated synthetic peptide between 635-662 amino acids from the Central region of human CNTN1.

**Dilution**

WB~~1:1000

E~~Use at an assay dependent concentration.

**Format**

Purified polyclonal antibody supplied in PBS with 0.09% (W/V) sodium azide. This antibody is purified through a protein A column, followed by peptide affinity purification.

**Storage**

Maintain refrigerated at 2-8°C for up to 2 weeks. For long term storage store at -20°C in small aliquots to prevent freeze-thaw cycles.

**Precautions**

CNTN1 Antibody (Center) is for research use only and not for use in diagnostic or therapeutic procedures.

**CNTN1 Antibody (Center) - Protein Information****Name** CNTN1

**Function** Contactins mediate cell surface interactions during nervous system development. Involved in the formation of paranodal axo-glial junctions in myelinated peripheral nerves and in the signaling between axons and myelinating glial cells via its association with CNTNAP1. Participates in oligodendrocytes generation by acting as a ligand of NOTCH1. Its association with NOTCH1 promotes NOTCH1 activation through the released notch intracellular domain (NICD) and subsequent translocation to the nucleus. Interaction with TNR induces a repulsion of neurons and an inhibition of neurite outgrowth (By similarity).

#### **Cellular Location**

[Isoform 1]: Cell membrane; Lipid-anchor, GPI- anchor; Extracellular side

#### **Tissue Location**

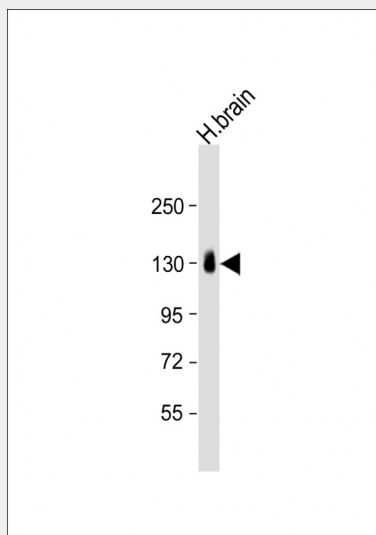
Strongly expressed in brain and in neuroblastoma and retinoblastoma cell lines. Lower levels of expression in lung, pancreas, kidney and skeletal muscle.

### **CNTN1 Antibody (Center) - Protocols**

Provided below are standard protocols that you may find useful for product applications.

- [Western Blot](#)
- [Blocking Peptides](#)
- [Dot Blot](#)
- [Immunohistochemistry](#)
- [Immunofluorescence](#)
- [Immunoprecipitation](#)
- [Flow Cytometry](#)
- [Cell Culture](#)

### **CNTN1 Antibody (Center) - Images**



Anti-CNTN1 Antibody (Center) at 1:1000 dilution + human brain lysate Lysates/proteins at 20 µg per lane. Secondary Goat Anti-Rabbit IgG, (H+L), Peroxidase conjugated at 1/10000 dilution. Predicted band size : 113 kDa Blocking/Dilution buffer: 5% NFDM/TBST.

### **CNTN1 Antibody (Center) - Background**

CNTN1 is a member of the immunoglobulin superfamily. It is a glycosylphosphatidylinositol

(GPI)-anchored neuronal membrane protein that functions as a cell adhesion molecule. It may play a role in the formation of axon connections in the developing nervous system.

#### **CNTN1 Antibody (Center) - References**

Gratacos, M., et al. Am. J. Med. Genet. B Neuropsychiatr. Genet. 150B (6), 808-816 (2009) :  
Compton, A.G., et al. Am. J. Hum. Genet. 83(6):714-724(2008)  
Melzer, D., et al. PLoS Genet. 4 (5), E1000072 (2008)