

GBE1 Antibody (Center)
Affinity Purified Rabbit Polyclonal Antibody (Pab)
Catalog # AP9506c

Specification

GBE1 Antibody (Center) - Product Information

Application	IF, WB,E
Primary Accession	Q04446
Other Accession	Q9D6Y9
Reactivity	Human, Mouse
Host	Rabbit
Clonality	Polyclonal
Isotype	Rabbit IgG
Calculated MW	80474
Antigen Region	527-556

GBE1 Antibody (Center) - Additional Information

Gene ID 2632

Other Names

4-alpha-glucan-branching enzyme, Brancher enzyme, Glycogen-branching enzyme, GBE1

Target/Specificity

This GBE1 antibody is generated from rabbits immunized with a KLH conjugated synthetic peptide between 527-556 amino acids from the Central region of human GBE1.

Dilution

IF~~1:10~50

WB~~1:1000

E~~Use at an assay dependent concentration.

Format

Purified polyclonal antibody supplied in PBS with 0.09% (W/V) sodium azide. This antibody is purified through a protein A column, followed by peptide affinity purification.

Storage

Maintain refrigerated at 2-8°C for up to 2 weeks. For long term storage store at -20°C in small aliquots to prevent freeze-thaw cycles.

Precautions

GBE1 Antibody (Center) is for research use only and not for use in diagnostic or therapeutic procedures.

GBE1 Antibody (Center) - Protein Information

Name GBE1

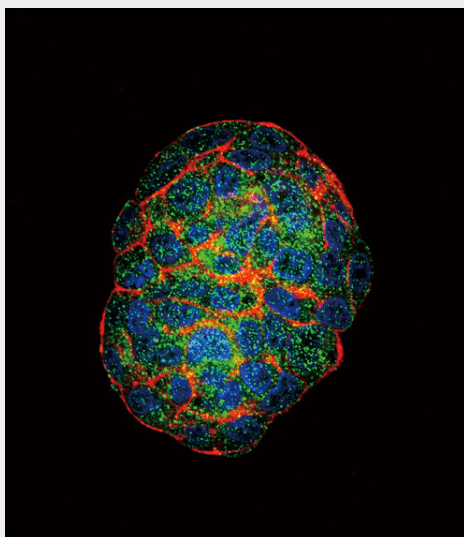
Function Glycogen-branching enzyme participates in the glycogen biosynthetic process along with glycogenin and glycogen synthase. Generates alpha-1,6-glucosidic branches from alpha-1,4-linked glucose chains, to increase solubility of the glycogen polymer (PubMed:[26199317](#), PubMed:[8463281](#), PubMed:[8613547](#)).

GBE1 Antibody (Center) - Protocols

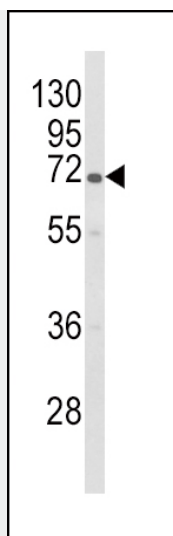
Provided below are standard protocols that you may find useful for product applications.

- [Western Blot](#)
- [Blocking Peptides](#)
- [Dot Blot](#)
- [Immunohistochemistry](#)
- [Immunofluorescence](#)
- [Immunoprecipitation](#)
- [Flow Cytometry](#)
- [Cell Culture](#)

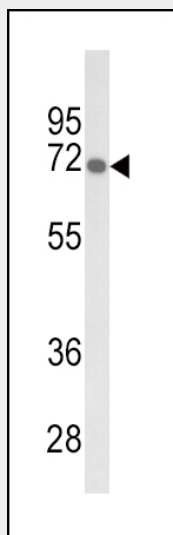
GBE1 Antibody (Center) - Images



Confocal immunofluorescent analysis of GBE1 Antibody (Center)(Cat#AP9506c) with HepG2 cell followed by Alexa Fluor[®] 488-conjugated goat anti-rabbit IgG (green). Actin filaments have been labeled with Alexa Fluor 555 phalloidin (red). DAPI was used to stain the cell nuclear (blue).



Western blot analysis of GBE1 Antibody (Center) (Cat. #AP9506c) in HL-60 cell line lysates (35ug/lane). GBE1 (arrow) was detected using the purified Pab;



Western blot analysis of GBE1 Antibody (Center) (Cat. #AP9506c) in mouse liver tissue lysates (35ug/lane). GBE1 (arrow) was detected using the purified Pab.

GBE1 Antibody (Center) - Background

GBE1 is a glycogen branching enzyme that catalyzes the transfer of alpha-1,4-linked glucosyl units from the outer end of a glycogen chain to an alpha-1,6 position on the same or a neighboring glycogen chain. Branching of the chains is essential to increase the solubility of the glycogen molecule and, consequently, in reducing the osmotic pressure within cells. Highest level of this enzyme are found in liver and muscle. Mutations in this gene are associated with glycogen storage disease IV (also known as Andersen's disease).

GBE1 Antibody (Center) - References

Konstantinidou, A.E., et al. Placenta 29(4):378-381(2008)
Massa, R., et al. Muscle Nerve 37(4):530-536(2008)
Bruno, C., et al. Acta Myol 26(1):75-78(2007)