

HES6 Antibody (N-term)
Affinity Purified Rabbit Polyclonal Antibody (Pab)
Catalog # AP9509A**Specification**

HES6 Antibody (N-term) - Product Information

Application	WB,E
Primary Accession	Q96HZ4
Reactivity	Human
Host	Rabbit
Clonality	Polyclonal
Isotype	Rabbit IgG
Calculated MW	24129
Antigen Region	6-34

HES6 Antibody (N-term) - Additional Information**Gene ID** 55502**Other Names**

Transcription cofactor HES-6, C-HAIRY1, Class B basic helix-loop-helix protein 41, bHLHb41, Hairy and enhancer of split 6, HES6 {ECO:0000312|EMBL:AAK516341}, BHLHB41

Target/Specificity

This HES6 antibody is generated from rabbits immunized with a KLH conjugated synthetic peptide between 6-34 amino acids from the N-terminal region of human HES6.

Dilution

WB~~1:1000

E~~Use at an assay dependent concentration.

Format

Purified polyclonal antibody supplied in PBS with 0.09% (W/V) sodium azide. This antibody is purified through a protein A column, followed by peptide affinity purification.

Storage

Maintain refrigerated at 2-8°C for up to 2 weeks. For long term storage store at -20°C in small aliquots to prevent freeze-thaw cycles.

Precautions

HES6 Antibody (N-term) is for research use only and not for use in diagnostic or therapeutic procedures.

HES6 Antibody (N-term) - Protein Information**Name** HES6 {ECO:0000312|EMBL:AAK51634.1}**Synonyms** BHLHB41

Function Does not bind DNA itself but suppresses both HES1-mediated N box-dependent transcriptional repression and binding of HES1 to E box sequences. Also suppresses HES1-mediated inhibition of the heterodimer formed by ASCL1/MASH1 and TCF3/E47, allowing ASCL1 and TCF3 to up-regulate transcription in its presence. Promotes cell differentiation (By similarity).

Cellular Location

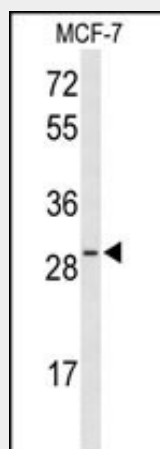
Nucleus.

HES6 Antibody (N-term) - Protocols

Provided below are standard protocols that you may find useful for product applications.

- [Western Blot](#)
- [Blocking Peptides](#)
- [Dot Blot](#)
- [Immunohistochemistry](#)
- [Immunofluorescence](#)
- [Immunoprecipitation](#)
- [Flow Cytometry](#)
- [Cell Culture](#)

HES6 Antibody (N-term) - Images



Western blot analysis of HES6 Antibody (N-term) (Cat. #AP9509a) in MCF-7 cell line lysates (35ug/lane). HES6 (arrow) was detected using the purified Pab.

HES6 Antibody (N-term) - Background

HES6 is a member of a subfamily of basic helix-loop-helix transcription repressors that have homology to the Drosophila enhancer of split genes. The protein functions as a cofactor, interacting with other transcription factors through a tetrapeptide domain in its C-terminus.

HES6 Antibody (N-term) - References

Iubb, D.M., et al. Neurosci. Lett. 460(2):185-190(2009)
de Krom, M., et al. Biol. Psychiatry 65(7):625-630(2009)
Eun, B., et al. J. Biol. Chem. 283(9):5939-5949(2008)
Scheffer, D., et al. FEBS Lett. 581(24):4651-4656(2007)