

AMY1A Antibody (Center)
Affinity Purified Rabbit Polyclonal Antibody (Pab)
Catalog # AP9519c

Specification

AMY1A Antibody (Center) - Product Information

Application	FC, IHC-P, WB,E
Primary Accession	P04745
Other Accession	P00690 , P0DTE7 , P0DTE8 , P0DUB6
Reactivity	Human
Predicted	Pig
Host	Rabbit
Clonality	Polyclonal
Isotype	Rabbit IgG
Antigen Region	195-223

AMY1A Antibody (Center) - Additional Information

Other Names

Alpha-amylase 1, 4-alpha-D-glucan glucanohydrolase 1, Salivary alpha-amylase, AMY1A, AMY1

Target/Specificity

This AMY1A antibody is generated from rabbits immunized with a KLH conjugated synthetic peptide between 195-223 amino acids from the Central region of human AMY1A.

Dilution

FC~~1:10~50

IHC-P~~1:50~100

WB~~1:1000

E~~Use at an assay dependent concentration.

Format

Purified polyclonal antibody supplied in PBS with 0.09% (W/V) sodium azide. This antibody is purified through a protein A column, followed by peptide affinity purification.

Storage

Maintain refrigerated at 2-8°C for up to 2 weeks. For long term storage store at -20°C in small aliquots to prevent freeze-thaw cycles.

Precautions

AMY1A Antibody (Center) is for research use only and not for use in diagnostic or therapeutic procedures.

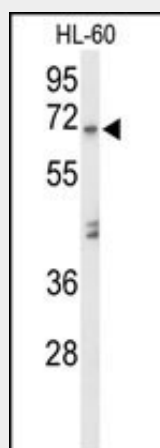
AMY1A Antibody (Center) - Protein Information

AMY1A Antibody (Center) - Protocols

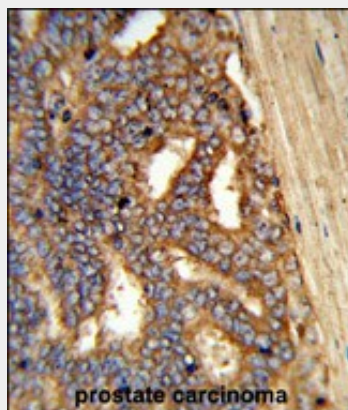
Provided below are standard protocols that you may find useful for product applications.

- [Western Blot](#)
- [Blocking Peptides](#)
- [Dot Blot](#)
- [Immunohistochemistry](#)
- [Immunofluorescence](#)
- [Immunoprecipitation](#)
- [Flow Cytometry](#)
- [Cell Culture](#)

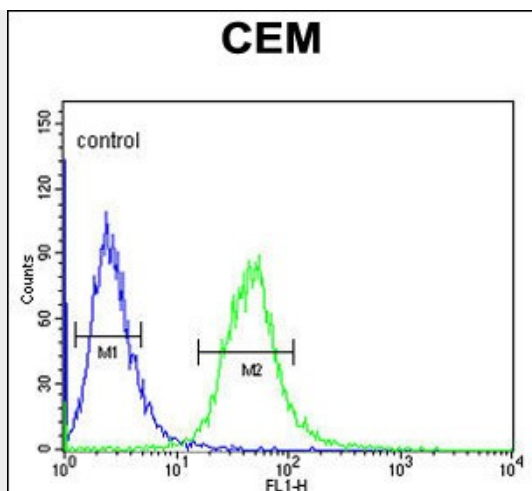
AMY1A Antibody (Center) - Images



Western blot analysis of AMY1A Antibody (Center) (Cat. #AP9519c) in HL-60 cell line lysates (35ug/lane). AMY1A (arrow) was detected using the purified Pab.



Formalin-fixed and paraffin-embedded human prostate carcinoma reacted with AMY1A Antibody (Center), which was peroxidase-conjugated to the secondary antibody, followed by DAB staining. This data demonstrates the use of this antibody for immunohistochemistry; clinical relevance has not been evaluated.



AMY1A Antibody (Center) (Cat. #AP9519c) flow cytometric analysis of CEM cells (right histogram) compared to a negative control cell (left histogram). FITC-conjugated goat-anti-rabbit secondary antibodies were used for the analysis.

AMY1A Antibody (Center) - Background

Amylases are secreted proteins that hydrolyze 1,4-alpha-glucoside bonds in oligosaccharides and polysaccharides, and thus catalyze the first step in digestion of dietary starch and glycogen. The human genome has a cluster of several amylase genes that are expressed at high levels in either salivary gland or pancreas. It is an amylase isoenzyme produced by the salivary gland.

AMY1A Antibody (Center) - References

Ragunath, C., et al. J. Mol. Biol. 384(5):1232-1248(2008)
Takahashi, T., et al. Neuro Endocrinol. Lett. 28(5):662-665(2007)
Perry, G.H., et al. Nat. Genet. 39(10):1256-1260(2007)
Chaudhuri, B., et al. BMC Microbiol. 7, 60 (2007) :
Ewing, R.M., et al. Mol. Syst. Biol. 3, 89 (2007) :
Bank, R.A., et al. Electrophoresis 12(1):74-79(1991)