

**LRRC4 Antibody (C-term)**  
**Affinity Purified Rabbit Polyclonal Antibody (Pab)**  
**Catalog # AP9530b****Specification**

---

**LRRC4 Antibody (C-term) - Product Information**

Application	IHC-P, WB,E
Primary Accession	<a href="#">Q9HBW1</a>
Other Accession	<a href="#">Q45R42</a> , <a href="#">Q99PH1</a>
Reactivity	Human
Predicted	Mouse, Rat
Host	Rabbit
Clonality	Polyclonal
Isotype	Rabbit IgG
Antigen Region	531-559

**LRRC4 Antibody (C-term) - Additional Information****Gene ID** 64101**Other Names**

Leucine-rich repeat-containing protein 4, Brain tumor-associated protein BAG, Nasopharyngeal carcinoma-associated gene 14 protein, Netrin-G2 ligand, NGL-2, LRRC4, BAG

**Target/Specificity**

This LRRC4 antibody is generated from rabbits immunized with a KLH conjugated synthetic peptide between 531-559 amino acids from the C-terminal region of human LRRC4.

**Dilution**

IHC-P~~1:50~100

WB~~1:1000

E~~Use at an assay dependent concentration.

**Format**

Purified polyclonal antibody supplied in PBS with 0.09% (W/V) sodium azide. This antibody is purified through a protein A column, followed by peptide affinity purification.

**Storage**

Maintain refrigerated at 2-8°C for up to 2 weeks. For long term storage store at -20°C in small aliquots to prevent freeze-thaw cycles.

**Precautions**

LRRC4 Antibody (C-term) is for research use only and not for use in diagnostic or therapeutic procedures.

**LRRC4 Antibody (C-term) - Protein Information****Name** LRRC4

### Synonyms BAG

**Function** Synaptic adhesion protein. Regulates the formation of excitatory synapses through the recruitment of pre-and-postsynaptic proteins. Organize the lamina/pathway-specific differentiation of dendrites. Plays an important role for auditory synaptic responses. Involved in the suppression of glioma (By similarity).

### Cellular Location

Membrane; Single-pass type I membrane protein. Postsynaptic cell membrane. Note=LRRC4 and DLG4 are interdependent for synaptic localization.

### Tissue Location

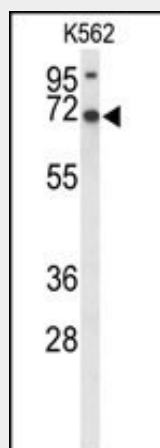
Specifically expressed in brain.

### LRRC4 Antibody (C-term) - Protocols

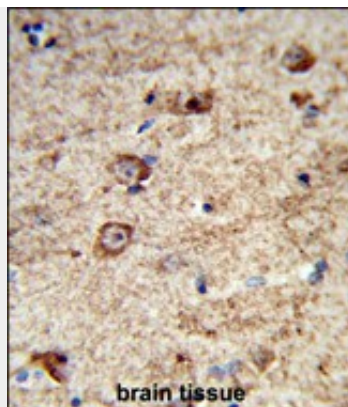
Provided below are standard protocols that you may find useful for product applications.

- [Western Blot](#)
- [Blocking Peptides](#)
- [Dot Blot](#)
- [Immunohistochemistry](#)
- [Immunofluorescence](#)
- [Immunoprecipitation](#)
- [Flow Cytometry](#)
- [Cell Culture](#)

### LRRC4 Antibody (C-term) - Images



Western blot analysis of LRRC4 Antibody (C-term) (Cat. #AP9530b) in K562 cell line lysates (35ug/lane). LRRC4 (arrow) was detected using the purified Pab.



Formalin-fixed and paraffin-embedded human brain tissue reacted with LRRC4 Antibody (C-term), which was peroxidase-conjugated to the secondary antibody, followed by DAB staining. This data demonstrates the use of this antibody for immunohistochemistry; clinical relevance has not been evaluated.

#### **LRRC4 Antibody (C-term) - Background**

The exact function of LRRC4 is unknown.

#### **LRRC4 Antibody (C-term) - References**

- Wu, M., et al. J. Cell. Physiol. 214(1):65-74(2008)  
Zhang, Z., et al. BMC Mol. Biol. 9, 99 (2008) :  
Wu, M., et al. J. Neurooncol. 80(2):133-142(2006)  
Wu, M., et al. Mol. Biol. Cell 17(8):3534-3542(2006)  
Zhang, Q.H., et al. Acta Biochim. Biophys. Sin. (Shanghai) 37(10):680-687(2005)  
Zhang, Q.H., et al. Acta Biochim. Biophys. Sin. (Shanghai) 37(8):532-540(2005)

#### **LRRC4 Antibody (C-term) - Citations**

- [Global analysis of DNA methylation in hepatocellular carcinoma by a liquid hybridization capture-based bisulfite sequencing approach.](#)