

RPL31 Antibody (Center)
Affinity Purified Rabbit Polyclonal Antibody (Pab)
Catalog # AP9532c**Specification**

RPL31 Antibody (Center) - Product Information

Application	FC, IHC-P, WB,E
Primary Accession	P62899
Other Accession	Q6NUH0 , P62902 , P62901 , P62900 , Q56JX3 , NP_001092047 , G1SHG0
Reactivity	Human
Predicted	Bovine, Mouse, Pig, Rabbit, Rat, Xenopus
Host	Rabbit
Clonality	Polyclonal
Isotype	Rabbit IgG
Calculated MW	14463
Antigen Region	24-51

RPL31 Antibody (Center) - Additional Information**Gene ID** 6160**Other Names**

60S ribosomal protein L31, RPL31

Target/Specificity

This RPL31 antibody is generated from rabbits immunized with a KLH conjugated synthetic peptide between 24-51 amino acids from the Central region of human RPL31.

Dilution

FC~~1:10~50

IHC-P~~1:50~100

WB~~1:1000

E~~Use at an assay dependent concentration.

Format

Purified polyclonal antibody supplied in PBS with 0.09% (W/V) sodium azide. This antibody is purified through a protein A column, followed by peptide affinity purification.

Storage

Maintain refrigerated at 2-8°C for up to 2 weeks. For long term storage store at -20°C in small aliquots to prevent freeze-thaw cycles.

Precautions

RPL31 Antibody (Center) is for research use only and not for use in diagnostic or therapeutic procedures.

RPL31 Antibody (Center) - Protein Information

Name RPL31

Function Component of the large ribosomal subunit (PubMed:[23636399](#), PubMed:[32669547](#)). The ribosome is a large ribonucleoprotein complex responsible for the synthesis of proteins in the cell (PubMed:[23636399](#), PubMed:[32669547](#)).

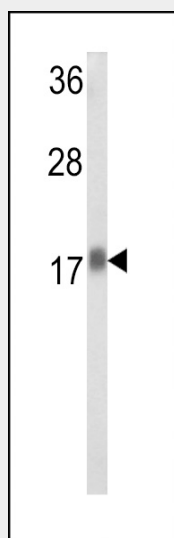
Cellular Location

Cytoplasm.

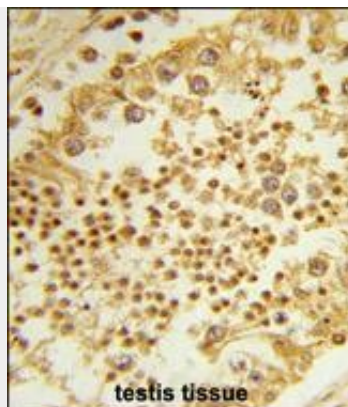
RPL31 Antibody (Center) - Protocols

Provided below are standard protocols that you may find useful for product applications.

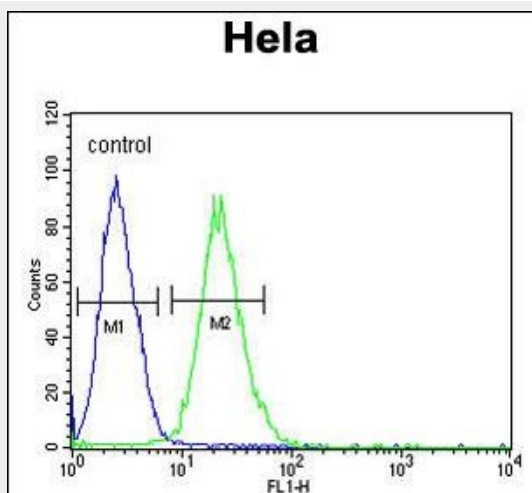
- [Western Blot](#)
- [Blocking Peptides](#)
- [Dot Blot](#)
- [Immunohistochemistry](#)
- [Immunofluorescence](#)
- [Immunoprecipitation](#)
- [Flow Cytometry](#)
- [Cell Culture](#)

RPL31 Antibody (Center) - Images

Western blot analysis of RPL31 Antibody (Center) (Cat. #AP9532c) in HeLa cell line lysates (35ug/lane). RPL31 (arrow) was detected using the purified Pab.



Formalin-fixed and paraffin-embedded human testis tissue reacted with RPL31 Antibody (Center), which was peroxidase-conjugated to the secondary antibody, followed by DAB staining. This data demonstrates the use of this antibody for immunohistochemistry; clinical relevance has not been evaluated.



RPL31 Antibody (Center) (Cat. #AP9532c) flow cytometric analysis of Hela cells (right histogram) compared to a negative control cell (left histogram). FITC-conjugated goat-anti-rabbit secondary antibodies were used for the analysis.

RPL31 Antibody (Center) - Background

Ribosomes, the organelles that catalyze protein synthesis, consist of a small 40S subunit and a large 60S subunit. Together these subunits are composed of 4 RNA species and approximately 80 structurally distinct proteins. RPL31 is a ribosomal protein that is a component of the 60S subunit. The protein belongs to the L31E family of ribosomal proteins. It is located in the cytoplasm.

RPL31 Antibody (Center) - References

- Ewing, R.M., et al. Mol. Syst. Biol. 3, 89 (2007) :
- Olsen, J.V., et al. Cell 127(3):635-648(2006)
- Olsen, J.V., et al. Cell 127(3):635-648(2006)
- Hillier, L.W., et al. Nature 434(7034):724-731(2005)
- Rush, J., et al. Nat. Biotechnol. 23(1):94-101(2005)
- Rush, J., et al. Nat. Biotechnol. 23(1):94-101(2005)