

**MAT2B Antibody (N-term)**  
**Affinity Purified Rabbit Polyclonal Antibody (Pab)**  
**Catalog # AP9534a****Specification**

---

**MAT2B Antibody (N-term) - Product Information**

Application	IHC-P, WB,E
Primary Accession	<a href="#">O9NZL9</a>
Other Accession	<a href="#">NP_037415</a>
Reactivity	Human
Host	Rabbit
Clonality	Polyclonal
Isotype	Rabbit IgG
Calculated MW	37552
Antigen Region	80-107

**MAT2B Antibody (N-term) - Additional Information****Gene ID** 27430**Other Names**

Methionine adenosyltransferase 2 subunit beta, Methionine adenosyltransferase II beta, MAT II beta, Putative dTDP-4-keto-6-deoxy-D-glucose 4-reductase, MAT2B, TGR

**Target/Specificity**

This MAT2B antibody is generated from rabbits immunized with a KLH conjugated synthetic peptide between 80-107 amino acids from the N-terminal region of human MAT2B.

**Dilution**

IHC-P~~1:50~100

WB~~1:1000

E~~Use at an assay dependent concentration.

**Format**

Purified polyclonal antibody supplied in PBS with 0.09% (W/V) sodium azide. This antibody is purified through a protein A column, followed by peptide affinity purification.

**Storage**

Maintain refrigerated at 2-8°C for up to 2 weeks. For long term storage store at -20°C in small aliquots to prevent freeze-thaw cycles.

**Precautions**

MAT2B Antibody (N-term) is for research use only and not for use in diagnostic or therapeutic procedures.

**MAT2B Antibody (N-term) - Protein Information****Name** MAT2B

## Synonyms TGR

**Function** Regulatory subunit of S-adenosylmethionine synthetase 2, an enzyme that catalyzes the formation of S-adenosylmethionine from methionine and ATP. Regulates MAT2A catalytic activity by changing its kinetic properties, increasing its affinity for L-methionine (PubMed:[10644686](#), PubMed:[23189196](#), PubMed:[25075345](#)). Can bind NADP (in vitro) (PubMed:[23189196](#), PubMed:[23425511](#)).

## Tissue Location

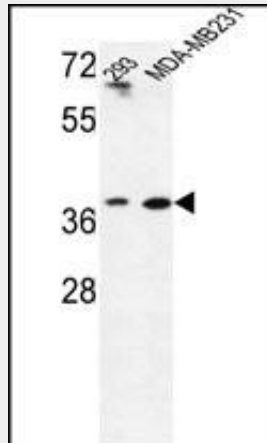
Widely expressed.

## MAT2B Antibody (N-term) - Protocols

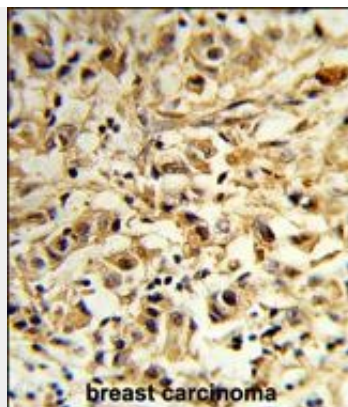
Provided below are standard protocols that you may find useful for product applications.

- [Western Blot](#)
- [Blocking Peptides](#)
- [Dot Blot](#)
- [Immunohistochemistry](#)
- [Immunofluorescence](#)
- [Immunoprecipitation](#)
- [Flow Cytometry](#)
- [Cell Culture](#)

## MAT2B Antibody (N-term) - Images



Western blot analysis of MAT2B Antibody (N-term) (Cat. #AP9534a) in 293, MDA-MB231 cell line lysates (35ug/lane). MAT2B (arrow) was detected using the purified Pab.



Formalin-fixed and paraffin-embedded human breast carcinoma reacted with MAT2B Antibody (N-term), which was peroxidase-conjugated to the secondary antibody, followed by DAB staining. This data demonstrates the use of this antibody for immunohistochemistry; clinical relevance has not been evaluated.

#### **MAT2B Antibody (N-term) - Background**

MAT2B belongs to the methionine adenosyltransferase (MAT) family. MAT catalyzes the biosynthesis of S-adenosylmethionine from methionine and ATP. This protein is the regulatory beta subunit of MAT.

#### **MAT2B Antibody (N-term) - References**

Martinez, C.A., et al. Am. J. Obstet. Gynecol. 201 (4), 394 (2009) :  
Boyles, A.L., et al. Genet. Epidemiol. 33(3):247-255(2009)  
Persson, B., et al. Chem. Biol. Interact. 178 (1-3), 94-98 (2009) :  
Attia, R.R., et al. J. Biol. Chem. 283(45):30788-30795(2008)  
Wang, Q., et al. World J. Gastroenterol. 14(29):4633-4642(2008)  
LeGros, L., et al. J. Biol. Chem. 276(27):24918-24924(2001)