

NXPH1 Antibody (N-term)
Affinity Purified Rabbit Polyclonal Antibody (Pab)
Catalog # AP9543b**Specification**

NXPH1 Antibody (N-term) - Product Information

Application	FC, IHC-P, WB,E
Primary Accession	P58417
Other Accession	Q63366 , Q61200 , Q5E9M6
Reactivity	Human, Mouse
Predicted	Bovine, Rat
Host	Rabbit
Clonality	Polyclonal
Isotype	Rabbit IgG
Calculated MW	31082
Antigen Region	56-85

NXPH1 Antibody (N-term) - Additional Information**Gene ID** 30010**Other Names**

Neurexophilin-1, NXPH1, NPH1

Target/Specificity

This NXPH1 antibody is generated from rabbits immunized with a KLH conjugated synthetic peptide between 56-85 amino acids from the N-terminal region of human NXPH1.

Dilution

FC~~1:10~50

IHC-P~~1:50~100

WB~~1:1000

E~~Use at an assay dependent concentration.

Format

Purified polyclonal antibody supplied in PBS with 0.09% (W/V) sodium azide. This antibody is purified through a protein A column, followed by peptide affinity purification.

Storage

Maintain refrigerated at 2-8°C for up to 2 weeks. For long term storage store at -20°C in small aliquots to prevent freeze-thaw cycles.

Precautions

NXPH1 Antibody (N-term) is for research use only and not for use in diagnostic or therapeutic procedures.

NXPH1 Antibody (N-term) - Protein Information

Name NXPH1

Synonyms NPH1

Function May be signaling molecules that resemble neuropeptides and that act by binding to alpha-neurexins and possibly other receptors.

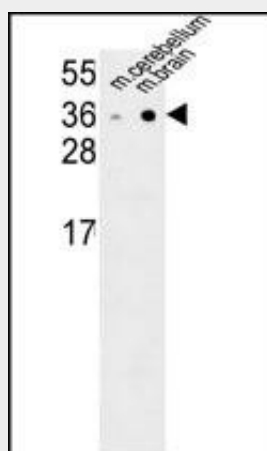
Cellular Location
Secreted.

NXPH1 Antibody (N-term) - Protocols

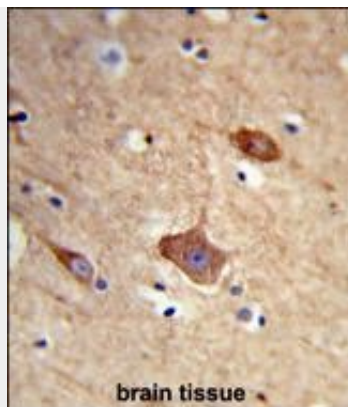
Provided below are standard protocols that you may find useful for product applications.

- [Western Blot](#)
- [Blocking Peptides](#)
- [Dot Blot](#)
- [Immunohistochemistry](#)
- [Immunofluorescence](#)
- [Immunoprecipitation](#)
- [Flow Cytometry](#)
- [Cell Culture](#)

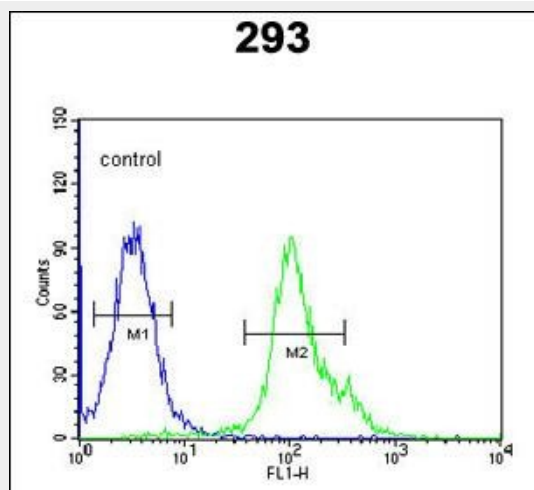
NXPH1 Antibody (N-term) - Images



NXPH1 Antibody (N-term) (Cat. #AP9543b) western blot analysis in mouse cerebellum, brain tissue lysates (35ug/lane). This demonstrates the NXPH1 antibody detected the NXPH1 protein (arrow).



Formalin-fixed and paraffin-embedded human brain tissue reacted with NXPH1 Antibody (N-term), which was peroxidase-conjugated to the secondary antibody, followed by DAB staining. This data demonstrates the use of this antibody for immunohistochemistry; clinical relevance has not been evaluated.



NXPH1 Antibody (N-term) (Cat. #AP9543b) flow cytometric analysis of 293 cells (right histogram) compared to a negative control cell (left histogram). FITC-conjugated goat-anti-rabbit secondary antibodies were used for the analysis.

NXPH1 Antibody (N-term) - Background

NXPH1 is a secreted protein with a variable N-terminal domain, a highly conserved, N-glycosylated central domain, a short linker region, and a cysteine-rich C-terminal domain. This protein forms a very tight complex with alpha neurexins, a group of proteins that promote adhesion between dendrites and axons.

NXPH1 Antibody (N-term) - References

- ?Xu, J., et al. Proc. Natl. Acad. Sci. U.S.A. 107(5):2136-2140(2010)
- ?Shen, L., et al. Neuroimage (2010) In press :
- ?van den Oord, E.J., et al. Arch. Gen. Psychiatry 65(9):1062-1071(2008)
- ?Melzer, D., et al. PLoS Genet. 4 (5), E1000072 (2008) :
- ?Ohira, M., et al. Cancer Lett. 197 (1-2), 63-68 (2003) :