

LUC7L2 Antibody (C-term)
Affinity Purified Rabbit Polyclonal Antibody (Pab)
Catalog # AP9549a

Specification

LUC7L2 Antibody (C-term) - Product Information

Application	FC, IHC-P, WB,E
Primary Accession	O9Y383
Other Accession	Q7TNC4
Reactivity	Human
Predicted	Mouse
Host	Rabbit
Clonality	Polyclonal
Isotype	Rabbit IgG
Calculated MW	46514
Antigen Region	341-369

LUC7L2 Antibody (C-term) - Additional Information

Gene ID 51631

Other Names

Putative RNA-binding protein Luc7-like 2, LUC7L2

Target/Specificity

This LUC7L2 antibody is generated from rabbits immunized with a KLH conjugated synthetic peptide between 341-369 amino acids from the C-terminal region of human LUC7L2.

Dilution

FC~~1:10~50

IHC-P~~1:50~100

WB~~1:1000

E~~Use at an assay dependent concentration.

Format

Purified polyclonal antibody supplied in PBS with 0.09% (W/V) sodium azide. This antibody is purified through a protein A column, followed by peptide affinity purification.

Storage

Maintain refrigerated at 2-8°C for up to 2 weeks. For long term storage store at -20°C in small aliquots to prevent freeze-thaw cycles.

Precautions

LUC7L2 Antibody (C-term) is for research use only and not for use in diagnostic or therapeutic procedures.

LUC7L2 Antibody (C-term) - Protein Information

Name LUC7L2

Function May bind to RNA via its Arg/Ser-rich domain.

Cellular Location

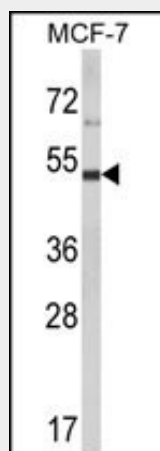
Nucleus speckle {ECO:0000250|UniProtKB:Q7TNC4}. Nucleus, nucleoplasm {ECO:0000250|UniProtKB:Q7TNC4}. Note=Colocalizes with SCNM1 and SNRNP70 in nuclear speckles {ECO:0000250|UniProtKB:Q7TNC4}

LUC7L2 Antibody (C-term) - Protocols

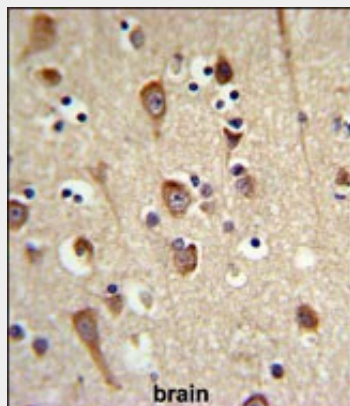
Provided below are standard protocols that you may find useful for product applications.

- [Western Blot](#)
- [Blocking Peptides](#)
- [Dot Blot](#)
- [Immunohistochemistry](#)
- [Immunofluorescence](#)
- [Immunoprecipitation](#)
- [Flow Cytometry](#)
- [Cell Culture](#)

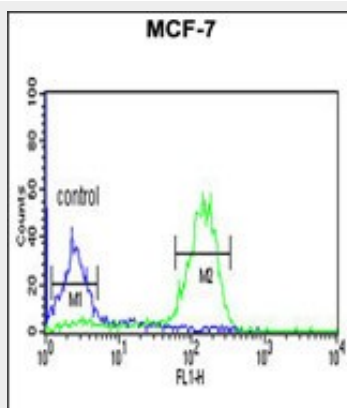
LUC7L2 Antibody (C-term) - Images



Western blot analysis of LUC7L2 Antibody (C-term) (Cat. #AP9549a) in MCF-7 cell line lysates (35ug/lane). LUC7L2 (arrow) was detected using the purified Pab.



LUC7L2 Antibody (C-term) (Cat. #AP9549a) IHC analysis in formalin fixed and paraffin embedded brain tissue followed by peroxidase conjugation of the secondary antibody and DAB staining. This data demonstrates the use of the LUC7L2 Antibody (C-term) for immunohistochemistry. Clinical relevance has not been evaluated.



LUC7L2 Antibody (C-term) (Cat. #AP9549a) flow cytometric analysis of MCF-7 cells (right histogram) compared to a negative control cell (left histogram). FITC-conjugated goat-anti-rabbit secondary antibodies were used for the analysis.

LUC7L2 Antibody (C-term) - Background

LUC7L2 may bind to RNA via its Arg/Ser-rich domain.

LUC7L2 Antibody (C-term) - References

- ?Webby, C.J., et al. Science 325(5936):90-93(2009)
- ?Howell, V.M., et al. Hum. Mol. Genet. 16(20):2506-2516(2007)
- ?Sugiyama, N., et al. Mol. Cell Proteomics 6(6):1103-1109(2007)
- ?Matsuoka, S., et al. Science 316(5828):1160-1166(2007)
- ?Puig, O., et al. Nucleic Acids Res. 35(17):5874-5885(2007)
- ?Ewing, R.M., et al. Mol. Syst. Biol. 3, 89 (2007) :