

**SPRR1A Antibody (C-term)**  
**Affinity Purified Rabbit Polyclonal Antibody (Pab)**  
**Catalog # AP9563a**

**Specification**

---

**SPRR1A Antibody (C-term) - Product Information**

Application	WB,E
Primary Accession	<a href="#">P35321</a>
Reactivity	Human
Host	Rabbit
Clonality	Polyclonal
Isotype	Rabbit IgG
Calculated MW	9877
Antigen Region	61-89

**SPRR1A Antibody (C-term) - Additional Information**

**Gene ID** 6698

**Other Names**

Cornifin-A, 19 kDa pancornulin, SPRK, Small proline-rich protein IA, SPR-IA, SPRR1A

**Target/Specificity**

This SPRR1A antibody is generated from rabbits immunized with a KLH conjugated synthetic peptide between 61-89 amino acids from the C-terminal region of human SPRR1A.

**Dilution**

WB~~1:1000

E~~Use at an assay dependent concentration.

**Format**

Purified polyclonal antibody supplied in PBS with 0.09% (W/V) sodium azide. This antibody is purified through a protein A column, followed by peptide affinity purification.

**Storage**

Maintain refrigerated at 2-8°C for up to 2 weeks. For long term storage store at -20°C in small aliquots to prevent freeze-thaw cycles.

**Precautions**

SPRR1A Antibody (C-term) is for research use only and not for use in diagnostic or therapeutic procedures.

**SPRR1A Antibody (C-term) - Protein Information**

**Name** SPRR1A

**Function** Cross-linked envelope protein of keratinocytes. It is a keratinocyte protein that first appears in the cell cytosol, but ultimately becomes cross-linked to membrane proteins by

transglutaminase. All that results in the formation of an insoluble envelope beneath the plasma membrane.

#### **Cellular Location**

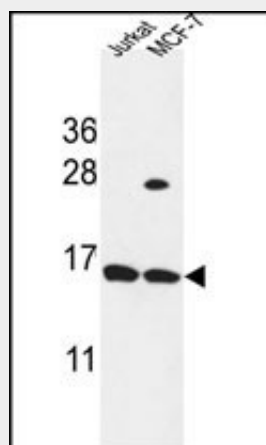
Cytoplasm.

#### **SPRR1A Antibody (C-term) - Protocols**

Provided below are standard protocols that you may find useful for product applications.

- [Western Blot](#)
- [Blocking Peptides](#)
- [Dot Blot](#)
- [Immunohistochemistry](#)
- [Immunofluorescence](#)
- [Immunoprecipitation](#)
- [Flow Cytometry](#)
- [Cell Culture](#)

#### **SPRR1A Antibody (C-term) - Images**



SPRR1A Antibody (C-term) (Cat. #AP9563a) western blot analysis in Jurkat, MCF-7 cell line lysates (35ug/lane). This demonstrates the SPRR1A antibody detected the SPRR1A protein (arrow).

#### **SPRR1A Antibody (C-term) - Background**

Cross-linked envelope protein of keratinocytes. It is a keratinocyte protein that first appears in the cell cytosol, but ultimately becomes cross-linked to membrane proteins by transglutaminase. All that results in the formation of an insoluble envelope beneath the plasma membrane.

#### **SPRR1A Antibody (C-term) - References**

- ?Jarzab, J., et al. Int. Arch. Allergy Immunol. 151(1):28-37(2010)
- ?Stemmler, S., et al. Int. J. Immunogenet. 36(4):217-222(2009)
- ?Kainu, K., et al. Exp. Dermatol. 18(2):109-115(2009)
- ?Bonilla, I.E., et al. J. Neurosci. 22(4):1303-1315(2002)