

**CHAT Antibody (N-term)**  
**Purified Rabbit Polyclonal Antibody (Pab)**  
**Catalog # AP9593a****Specification**

---

**CHAT Antibody (N-term) - Product Information**

Application	IF, WB,E
Primary Accession	<a href="#">P28329</a>
Reactivity	Human, Mouse
Host	Rabbit
Clonality	Polyclonal
Isotype	Rabbit IgG
Antigen Region	98-128

**CHAT Antibody (N-term) - Additional Information****Gene ID** 1103**Other Names**

Choline O-acetyltransferase, CHOACTase, ChAT, Choline acetylase, CHAT

**Target/Specificity**

This CHAT antibody is generated from rabbits immunized with a KLH conjugated synthetic peptide between 98-128 amino acids from the N-terminal region of human CHAT.

**Dilution**

IF~~1:10~50

WB~~1:1000

E~~Use at an assay dependent concentration.

**Format**

Purified polyclonal antibody supplied in PBS with 0.09% (W/V) sodium azide. This antibody is prepared by Saturated Ammonium Sulfate (SAS) precipitation followed by dialysis against PBS.

**Storage**

Maintain refrigerated at 2-8°C for up to 2 weeks. For long term storage store at -20°C in small aliquots to prevent freeze-thaw cycles.

**Precautions**

CHAT Antibody (N-term) is for research use only and not for use in diagnostic or therapeutic procedures.

**CHAT Antibody (N-term) - Protein Information****Name** CHAT

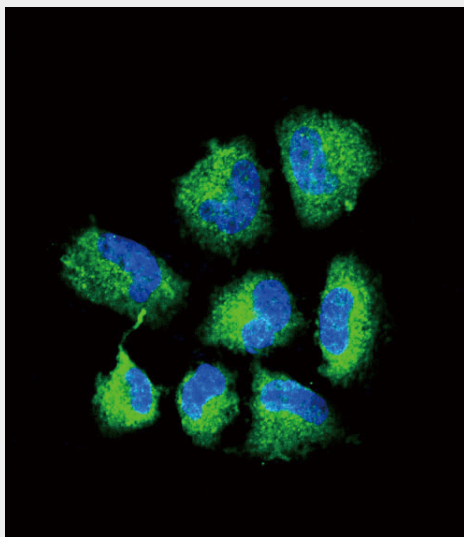
**Function** Catalyzes the reversible synthesis of acetylcholine (ACh) from acetyl CoA and choline at cholinergic synapses.

## CHAT Antibody (N-term) - Protocols

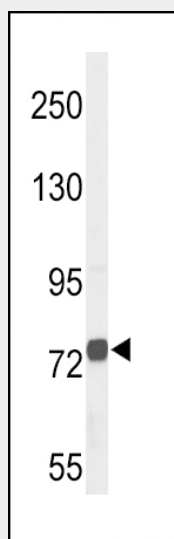
Provided below are standard protocols that you may find useful for product applications.

- [Western Blot](#)
- [Blocking Peptides](#)
- [Dot Blot](#)
- [Immunohistochemistry](#)
- [Immunofluorescence](#)
- [Immunoprecipitation](#)
- [Flow Cytometry](#)
- [Cell Culture](#)

## CHAT Antibody (N-term) - Images

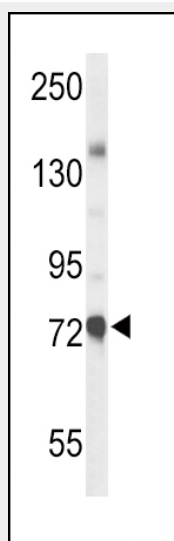


Confocal immunofluorescent analysis of CHAT Antibody (N-term) (Cat. #AP9593a) with NCI-H460 cell followed by Alexa Fluor<sup>®</sup>488-conjugated goat anti-rabbit IgG (green). DAPI was used to stain the cell nuclear (blue).



Western blot analysis of CHAT Antibody (N-term) (Cat. #AP9593a) in NCI-H460 cell line lysates

(35ug/lane).CHAT (arrow) was detected using the purified Pab.



Western blot analysis of CHAT Antibody (N-term) (Cat. #AP9593a) in mouse liver tissue lysates (35ug/lane). CHAT (arrow) was detected using the purified Pab.

#### **CHAT Antibody (N-term) - Background**

CHAT is an enzyme which catalyzes the biosynthesis of the neurotransmitter acetylcholine. This gene product is a characteristic feature of cholinergic neurons, and changes in these neurons may explain some of the symptoms of Alzheimer disease.

#### **CHAT Antibody (N-term) - References**

Shaffer, J.R., et al. Nutr Metab Cardiovasc Dis (2010) In press  
Beck, M., et al. Cell Tissue Res. 338(1):37-51(2009)  
Need, A.C., et al. Eur. J. Hum. Genet. 17(7):946-957(2009)