

**BLZF1 Antibody (Center)**  
**Affinity Purified Rabbit Polyclonal Antibody (Pab)**  
**Catalog # AP9600C****Specification**

---

**BLZF1 Antibody (Center) - Product Information**

Application	WB, IF, E
Primary Accession	<a href="#">Q9H2G9</a>
Reactivity	Human
Host	Rabbit
Clonality	Polyclonal
Isotype	Rabbit IgG
Calculated MW	44910
Antigen Region	156-184

**BLZF1 Antibody (Center) - Additional Information****Gene ID** 8548**Other Names**

Golgin-45, Basic leucine zipper nuclear factor 1, JEM-1, p45 basic leucine-zipper nuclear factor, BLZF1, JEM1

**Target/Specificity**

This BLZF1 antibody is generated from rabbits immunized with a KLH conjugated synthetic peptide between 156-184 amino acids from the Central region of human BLZF1.

**Dilution**

WB~~1:1000

IF~~1:10~50

E~~Use at an assay dependent concentration.

**Format**

Purified polyclonal antibody supplied in PBS with 0.09% (W/V) sodium azide. This antibody is purified through a protein A column, followed by peptide affinity purification.

**Storage**

Maintain refrigerated at 2-8°C for up to 2 weeks. For long term storage store at -20°C in small aliquots to prevent freeze-thaw cycles.

**Precautions**

BLZF1 Antibody (Center) is for research use only and not for use in diagnostic or therapeutic procedures.

**BLZF1 Antibody (Center) - Protein Information****Name** BLZF1

### Synonyms JEM1

**Function** Required for normal Golgi structure and for protein transport from the endoplasmic reticulum (ER) through the Golgi apparatus to the cell surface.

### Cellular Location

Golgi apparatus membrane [Isoform 2]: Cytoplasm. Note=Not detected in the nucleus

### Tissue Location

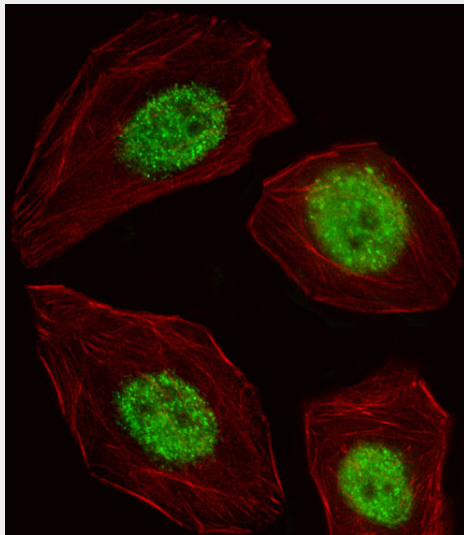
Detected in adrenal gland (PubMed:9129147).

## BLZF1 Antibody (Center) - Protocols

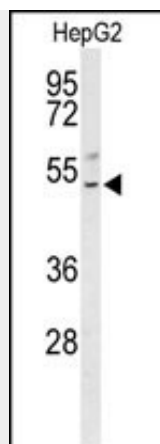
Provided below are standard protocols that you may find useful for product applications.

- [Western Blot](#)
- [Blocking Peptides](#)
- [Dot Blot](#)
- [Immunohistochemistry](#)
- [Immunofluorescence](#)
- [Immunoprecipitation](#)
- [Flow Cytometry](#)
- [Cell Culture](#)

## BLZF1 Antibody (Center) - Images



Fluorescent image of A549 cell stained with BLZF1 Antibody (Center)(Cat#AP9600c).A549 cells were fixed with 4% PFA (20 min), permeabilized with Triton X-100 (0.1%, 10 min), then incubated with BLZF1 primary antibody (1:25, 1 h at 37°C). For secondary antibody, Alexa Fluor® 488 conjugated donkey anti-rabbit antibody (green) was used (1:400, 50 min at 37°C).Cytoplasmic actin was counterstained with Alexa Fluor® 555 (red) conjugated Phalloidin (7units/ml, 1 h at 37°C).BLZF1 immunoreactivity is localized to Nucleus significantly.



Western blot analysis of BLZF1 Antibody (Center) (Cat. #AP9600c) in HepG2 cell line lysates (35ug/lane). BLZF1 (arrow) was detected using the purified Pab.

#### **BLZF1 Antibody (Center) - Background**

Required for normal Golgi structure and for protein transport from the endoplasmic reticulum (ER) through the Golgi apparatus to the cell surface.

#### **BLZF1 Antibody (Center) - References**

Ehret, G.B., et al. Eur. J. Hum. Genet. 17(12):1650-1657(2009)  
Cheung, C.L., et al. Hum. Mol. Genet. 18(4):679-687(2009)  
Reichman, T.W., et al. Mol. Cell. Biol. 22(1):343-356(2002)