

CBX2 Antibody (N-term)
Affinity Purified Rabbit Polyclonal Antibody (Pab)
Catalog # AP9605a**Specification**

CBX2 Antibody (N-term) - Product Information

Application	WB,E
Primary Accession	Q14781
Other Accession	P30658
Reactivity	Human
Predicted	Mouse
Host	Rabbit
Clonality	Polyclonal
Isotype	Rabbit IgG
Calculated MW	56081
Antigen Region	47-75

CBX2 Antibody (N-term) - Additional Information**Gene ID** 84733**Other Names**

Chromobox protein homolog 2, CBX2

Target/Specificity

This CBX2 antibody is generated from rabbits immunized with a KLH conjugated synthetic peptide between 47-75 amino acids from the N-terminal region of human CBX2.

Dilution

WB~~1:1000

E~~Use at an assay dependent concentration.

Format

Purified polyclonal antibody supplied in PBS with 0.09% (W/V) sodium azide. This antibody is purified through a protein A column, followed by peptide affinity purification.

Storage

Maintain refrigerated at 2-8°C for up to 2 weeks. For long term storage store at -20°C in small aliquots to prevent freeze-thaw cycles.

Precautions

CBX2 Antibody (N-term) is for research use only and not for use in diagnostic or therapeutic procedures.

CBX2 Antibody (N-term) - Protein Information**Name** CBX2

Function Component of a Polycomb group (PcG) multiprotein PRC1-like complex, a complex class required to maintain the transcriptionally repressive state of many genes, including Hox genes, throughout development (PubMed:[21282530](#)). PcG PRC1 complex acts via chromatin remodeling and modification of histones; it mediates monoubiquitination of histone H2A 'Lys-119', rendering chromatin heritably changed in its expressibility (PubMed:[21282530](#)). Binds to histone H3 trimethylated at 'Lys-9' (H3K9me3) or at 'Lys-27' (H3K27me3) (By similarity). Plays a role in the lineage differentiation of the germ layers in embryonic development (By similarity). Involved in sexual development, acting as activator of NR5A1 expression (PubMed:[19361780](#)).

Cellular Location

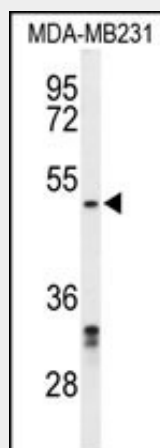
Nucleus. Chromosome Note=Localized in distinct foci on chromatin and in chromocenters
Localizes to the inactive X chromosome. Seems to be recruited to H3K27me3, H3K9ac and H3K3me2 sites on chromatin

CBX2 Antibody (N-term) - Protocols

Provided below are standard protocols that you may find useful for product applications.

- [Western Blot](#)
- [Blocking Peptides](#)
- [Dot Blot](#)
- [Immunohistochemistry](#)
- [Immunofluorescence](#)
- [Immunoprecipitation](#)
- [Flow Cytometry](#)
- [Cell Culture](#)

CBX2 Antibody (N-term) - Images



Western blot analysis of CBX2 Antibody (N-term) (Cat. #AP9605a) in MDA-MB231 cell line lysates (35ug/lane). CBX2 (arrow) was detected using the purified Pab.

CBX2 Antibody (N-term) - Background

CBX2 is a component of the polycomb multiprotein complex, which is required to maintain the transcriptionally repressive state of many genes throughout development via chromatin remodeling and modification of histones.

CBX2 Antibody (N-term) - References

Katoh-Fukui, Y., et al. Nature 393(6686):688-692(1998)
Gecz, J., et al. Genomics 26(1):130-133(1995)
Pearce, J.J., et al. Development 114(4):921-929(1992)
Paro, R., et al. Proc. Natl. Acad. Sci. U.S.A. 88(1):263-267(1991)