

DGCR6 Antibody (Center)
Affinity Purified Rabbit Polyclonal Antibody (Pab)
Catalog # AP9607c

Specification

DGCR6 Antibody (Center) - Product Information

Application	WB,E
Primary Accession	Q14129
Other Accession	Q9BY27
Reactivity	Human, Mouse
Host	Rabbit
Clonality	Polyclonal
Isotype	Rabbit IgG
Calculated MW	24989
Antigen Region	103-129

DGCR6 Antibody (Center) - Additional Information

Gene ID 8214

Other Names

Protein DGCR6, DiGeorge syndrome critical region 6, DGCR6

Target/Specificity

This DGCR6 antibody is generated from rabbits immunized with a KLH conjugated synthetic peptide between 103-129 amino acids from the Central region of human DGCR6.

Dilution

WB~~1:1000

E~~Use at an assay dependent concentration.

Format

Purified polyclonal antibody supplied in PBS with 0.09% (W/V) sodium azide. This antibody is purified through a protein A column, followed by peptide affinity purification.

Storage

Maintain refrigerated at 2-8°C for up to 2 weeks. For long term storage store at -20°C in small aliquots to prevent freeze-thaw cycles.

Precautions

DGCR6 Antibody (Center) is for research use only and not for use in diagnostic or therapeutic procedures.

DGCR6 Antibody (Center) - Protein Information

Name DGCR6

Function May play a role in neural crest cell migration into the third and fourth pharyngeal

pouches.

Cellular Location

Nucleus. Note=Predominantly nuclear

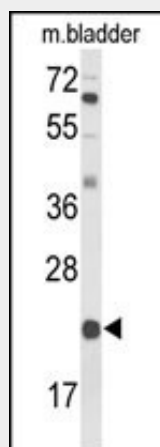
Tissue Location

Found in all tissues examined with highest expression in liver, heart and skeletal muscle. Lower levels in pancreas and placenta. Weak expression in brain

DGCR6 Antibody (Center) - Protocols

Provided below are standard protocols that you may find useful for product applications.

- [Western Blot](#)
- [Blocking Peptides](#)
- [Dot Blot](#)
- [Immunohistochemistry](#)
- [Immunofluorescence](#)
- [Immunoprecipitation](#)
- [Flow Cytometry](#)
- [Cell Culture](#)

DGCR6 Antibody (Center) - Images

Western blot analysis of DGCR6 Antibody (Center) (Cat. #AP9607c) in mouse bladder tissue lysates (35ug/lane). DGCR6 (arrow) was detected using the purified Pab.

DGCR6 Antibody (Center) - Background

DGCR6 may play a role in neural crest cell migration into the third and fourth pharyngeal pouches.

DGCR6 Antibody (Center) - References

Zunner, D., et al. Biochem. Biophys. Res. Commun. 393(2):185-189(2010)
Pfuhl, T., et al. Hum. Genet. 117(1):70-80(2005)