

**CLDN4 Antibody (C-term)**  
**Affinity Purified Rabbit Polyclonal Antibody (Pab)**  
**Catalog # AP9615b**

**Specification**

---

**CLDN4 Antibody (C-term) - Product Information**

Application	WB,E
Primary Accession	<a href="#">O14493</a>
Reactivity	Human, Mouse
Host	Rabbit
Clonality	Polyclonal
Isotype	Rabbit IgG
Calculated MW	22077
Antigen Region	171-197

**CLDN4 Antibody (C-term) - Additional Information**

**Gene ID** 1364

**Other Names**

Claudin-4, Clostridium perfringens enterotoxin receptor, CPE-R, CPE-receptor, Williams-Beuren syndrome chromosomal region 8 protein, CLDN4, CPER, CPETR1, WBSCR8

**Target/Specificity**

This CLDN4 antibody is generated from rabbits immunized with a KLH conjugated synthetic peptide between 171-197 amino acids from the C-terminal region of human CLDN4.

**Dilution**

WB~~1:1000

**Format**

Purified polyclonal antibody supplied in PBS with 0.09% (W/V) sodium azide. This antibody is purified through a protein A column, followed by peptide affinity purification.

**Storage**

Maintain refrigerated at 2-8°C for up to 2 weeks. For long term storage store at -20°C in small aliquots to prevent freeze-thaw cycles.

**Precautions**

CLDN4 Antibody (C-term) is for research use only and not for use in diagnostic or therapeutic procedures.

**CLDN4 Antibody (C-term) - Protein Information**

**Name** CLDN4

**Function** Channel-forming tight junction protein that mediates paracellular chloride transport in the kidney. Plays a critical role in the paracellular reabsorption of filtered chloride in the kidney

collecting ducts. Claudins play a major role in tight junction-specific obliteration of the intercellular space, through calcium-independent cell-adhesion activity.

#### Cellular Location

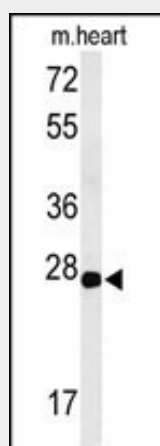
Cell junction, tight junction {ECO:0000250|UniProtKB:O35054}. Cell membrane; Multi-pass membrane protein. Note=CLDN4 is required for tight junction localization in the kidney. {ECO:0000250|UniProtKB:O35054}

#### CLDN4 Antibody (C-term) - Protocols

Provided below are standard protocols that you may find useful for product applications.

- [Western Blot](#)
- [Blocking Peptides](#)
- [Dot Blot](#)
- [Immunohistochemistry](#)
- [Immunofluorescence](#)
- [Immunoprecipitation](#)
- [Flow Cytometry](#)
- [Cell Culture](#)

#### CLDN4 Antibody (C-term) - Images



Western blot analysis of CLDN4 Antibody (C-term) (Cat. #AP9615b) in mouse heart tissue lysates (35ug/lane). CLDN4 (arrow) was detected using the purified Pab.

#### CLDN4 Antibody (C-term) - Background

CLDN4 is an integral membrane protein, which belongs to the claudin family. The protein is a component of tight junction strands and may play a role in internal organ development and function during pre- and postnatal life.

#### CLDN4 Antibody (C-term) - References

- Papageorgis, P., et al. Cancer Res. 70(3):968-978(2010)  
Kimura, J., et al. J. Biol. Chem. 285(1):401-408(2010)  
Robertson, S.L., et al. Infect. Immun. 78(1):505-517(2010)  
Seckin, Y., et al. Acta Gastroenterol. Belg. 72(4):407-412(2009)