

CENPI Antibody (Center)
Affinity Purified Rabbit Polyclonal Antibody (Pab)
Catalog # AP9618c**Specification**

CENPI Antibody (Center) - Product Information

Application	WB,E
Primary Accession	Q92674
Reactivity	Human
Host	Rabbit
Clonality	Polyclonal
Isotype	Rabbit IgG
Calculated MW	86720
Antigen Region	388-414

CENPI Antibody (Center) - Additional Information**Gene ID** 2491**Other Names**

Centromere protein I, CENP-I, FSH primary response protein 1, Follicle-stimulating hormone primary response protein, Interphase centromere complex protein 19, Leucine-rich primary response protein 1, CENPI, FSHPRH1, ICEN19, LRPR1

Target/Specificity

This CENPI antibody is generated from rabbits immunized with a KLH conjugated synthetic peptide between 388-414 amino acids from the Central region of human CENPI.

Dilution

WB~~1:1000

Format

Purified polyclonal antibody supplied in PBS with 0.09% (W/V) sodium azide. This antibody is purified through a protein A column, followed by peptide affinity purification.

Storage

Maintain refrigerated at 2-8°C for up to 2 weeks. For long term storage store at -20°C in small aliquots to prevent freeze-thaw cycles.

Precautions

CENPI Antibody (Center) is for research use only and not for use in diagnostic or therapeutic procedures.

CENPI Antibody (Center) - Protein Information**Name** CENPI**Synonyms** FSHPRH1, ICEN19, LRPR1

Function Component of the CENPA-CAD (nucleosome distal) complex, a complex recruited to centromeres which is involved in assembly of kinetochore proteins, mitotic progression and chromosome segregation. May be involved in incorporation of newly synthesized CENPA into centromeres via its interaction with the CENPA-NAC complex. Required for the localization of CENPF, MAD1L1 and MAD2 (MAD2L1 or MAD2L2) to kinetochores. Involved in the response of gonadal tissues to follicle-stimulating hormone.

Cellular Location

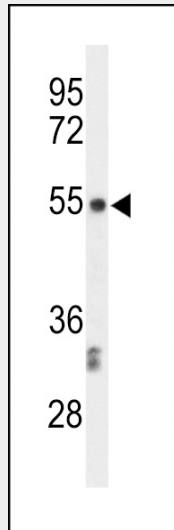
Nucleus. Chromosome, centromere. Note=Localizes exclusively in the centromeres. The CENPA-CAD complex is probably recruited on centromeres by the CENPA-NAC complex

CENPI Antibody (Center) - Protocols

Provided below are standard protocols that you may find useful for product applications.

- [Western Blot](#)
- [Blocking Peptides](#)
- [Dot Blot](#)
- [Immunohistochemistry](#)
- [Immunofluorescence](#)
- [Immunoprecipitation](#)
- [Flow Cytometry](#)
- [Cell Culture](#)

CENPI Antibody (Center) - Images



Western blot analysis of CENPI Antibody (Center) (Cat. #AP9618c) in CEM cell line lysates (35ug/lane). CENPI (arrow) was detected using the purified Pab.

CENPI Antibody (Center) - Background

CENPI is involved in the response of gonadal tissues to follicle-stimulating hormone.

CENPI Antibody (Center) - References

Cheeseman, I.M., et al. Mol. Biol. Cell 19(2):587-594(2008)
Izuta, H., et al. Genes Cells 11(6):673-684(2006)

Okada, M., et al. Nat. Cell Biol. 8(5):446-457(2006)