

CLPTM1 Antibody (Center)
Affinity Purified Rabbit Polyclonal Antibody (Pab)
Catalog # AP9622b**Specification**

CLPTM1 Antibody (Center) - Product Information

Application	WB,E
Primary Accession	O96005
Other Accession	Q8VBZ3 , Q6DEL2 , Q2NL17
Reactivity	Human, Mouse
Predicted	Bovine, Zebrafish
Host	Rabbit
Clonality	Polyclonal
Isotype	Rabbit IgG
Calculated MW	76097
Antigen Region	198-227

CLPTM1 Antibody (Center) - Additional Information**Gene ID** 1209**Other Names**

Cleft lip and palate transmembrane protein 1, CLPTM1

Target/Specificity

This CLPTM1 antibody is generated from rabbits immunized with a KLH conjugated synthetic peptide between 198-227 amino acids from the Central region of human CLPTM1.

Dilution

WB~~1:1000

E~~Use at an assay dependent concentration.

Format

Purified polyclonal antibody supplied in PBS with 0.09% (W/V) sodium azide. This antibody is purified through a protein A column, followed by peptide affinity purification.

Storage

Maintain refrigerated at 2-8°C for up to 2 weeks. For long term storage store at -20°C in small aliquots to prevent freeze-thaw cycles.

Precautions

CLPTM1 Antibody (Center) is for research use only and not for use in diagnostic or therapeutic procedures.

CLPTM1 Antibody (Center) - Protein Information**Name** CLPTM1

Function Involved in GABAergic but not glutamatergic transmission. Binds and traps GABAA receptors in the endoplasmic reticulum (ER). Modulates postsynaptic GABAergic transmission, and therefore inhibitory neurotransmission, by reducing the plasma membrane expression of these receptors. Altered GABAergic signaling is one among many causes of cleft palate (By similarity). Might function as a lipid scramblase, translocating lipids in membranes from one leaflet to the other one (By similarity). Required for efficient glycosylphosphatidylinositol (GPI) inositol deacylation in the ER, which is a crucial step to switch GPI- anchored proteins (GPI-APs) from protein folding to transport states (PubMed:[29255114](#)). May play a role in T-cell development (By similarity).

Cellular Location

Membrane; Multi-pass membrane protein

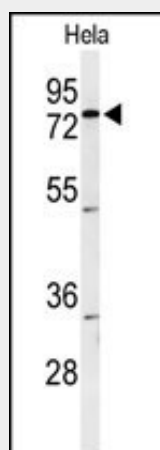
Tissue Location

Widely expressed..

CLPTM1 Antibody (Center) - Protocols

Provided below are standard protocols that you may find useful for product applications.

- [Western Blot](#)
- [Blocking Peptides](#)
- [Dot Blot](#)
- [Immunohistochemistry](#)
- [Immunofluorescence](#)
- [Immunoprecipitation](#)
- [Flow Cytometry](#)
- [Cell Culture](#)

CLPTM1 Antibody (Center) - Images

Western blot analysis of CLPTM1 Antibody (Center) (Cat. #AP9622b) in HeLa cell line lysates (35ug/lane). CLPTM1 (arrow) was detected using the purified Pab.

CLPTM1 Antibody (Center) - Background

CLPTM1 may play a role in T-cell development (By similarity).

CLPTM1 Antibody (Center) - References

Carter, T.C., et al. Birth Defects Res. Part A Clin. Mol. Teratol. 88(2):84-93(2010)
Hosgood, H.D. III, et al. Occup Environ Med 66(12):848-853(2009)
McKay, J.D., et al. Nat. Genet. 40(12):1404-1406(2008)