

JMJD2B Antibody (T305)
Affinity Purified Rabbit Polyclonal Antibody (Pab)
Catalog # AP9624A**Specification**

JMJD2B Antibody (T305) - Product Information

Application	WB,E
Primary Accession	O94953
Other Accession	O91VY5
Reactivity	Human, Mouse
Host	Rabbit
Clonality	Polyclonal
Isotype	Rabbit IgG
Antigen Region	281-306

JMJD2B Antibody (T305) - Additional Information**Gene ID** 23030**Other Names**

Lysine-specific demethylase 4B, 11411-, JmjC domain-containing histone demethylation protein 3B, Jumonji domain-containing protein 2B, KDM4B, JHDM3B, JMJD2B, KIAA0876

Target/Specificity

This JMJD2B antibody is generated from rabbits immunized with a KLH conjugated synthetic peptide between 281-306 amino acids from human JMJD2B.

Dilution

WB~~1:1000

E~~Use at an assay dependent concentration.

Format

Purified polyclonal antibody supplied in PBS with 0.09% (W/V) sodium azide. This antibody is purified through a protein A column, followed by peptide affinity purification.

Storage

Maintain refrigerated at 2-8°C for up to 2 weeks. For long term storage store at -20°C in small aliquots to prevent freeze-thaw cycles.

Precautions

JMJD2B Antibody (T305) is for research use only and not for use in diagnostic or therapeutic procedures.

JMJD2B Antibody (T305) - Protein Information**Name** KDM4B**Synonyms** JHDM3B, JMJD2B, KIAA0876

Function Histone demethylase that specifically demethylates 'Lys-9' of histone H3, thereby playing a role in histone code. Does not demethylate histone H3 'Lys-4', H3 'Lys-27', H3 'Lys-36' nor H4 'Lys- 20'. Only able to demethylate trimethylated H3 'Lys-9', with a weaker activity than KDM4A, KDM4C and KDM4D. Demethylation of Lys residue generates formaldehyde and succinate (PubMed:[16603238](#), PubMed:[28262558](#)). Plays a critical role in the development of the central nervous system (CNS).

Cellular Location

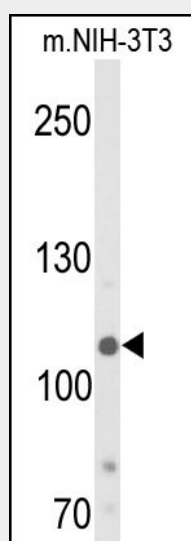
Nucleus {ECO:0000255|PROSITE-ProRule:PRU00537, ECO:0000269|PubMed:15927959}

JMJD2B Antibody (T305) - Protocols

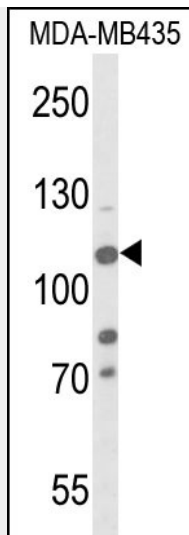
Provided below are standard protocols that you may find useful for product applications.

- [Western Blot](#)
- [Blocking Peptides](#)
- [Dot Blot](#)
- [Immunohistochemistry](#)
- [Immunofluorescence](#)
- [Immunoprecipitation](#)
- [Flow Cytometry](#)
- [Cell Culture](#)

JMJD2B Antibody (T305) - Images



Western blot analysis of JMJD2B-T305 (Cat. #AP9624a) in NIH-3T3 cell line lysates (35ug/lane). JMJD2B (arrow) was detected using the purified Pab.



Western blot analysis of JMJD2B-T305 (Cat. #AP9624a) in MDA-MB435 cell line lysates (35ug/lane). JMJD2B (arrow) was detected using the purified Pab.

JMJD2B Antibody (T305) - Background

Histone demethylase that specifically demethylates 'Lys-9' of histone H3, thereby playing a role in histone code. Does not demethylate histone H3 'Lys-4', H3 'Lys-27', H3 'Lys-36' nor H4 'Lys-20'. Only able to demethylate trimethylated H3 'Lys-9', with a weaker activity than KDM4A, KDM4C and KDM4D. Demethylation of Lys residue generates formaldehyde and succinate.

JMJD2B Antibody (T305) - References

Beyer, S., et al. J. Biol. Chem. 283(52):36542-36552(2008)
Pollard, P.J., et al. Biochem. J. 416(3):387-394(2008)
Kato, Y., et al. Int. J. Mol. Med. 20(2):269-273(2007)