

BCL11A Antibody (C-term)
Affinity Purified Rabbit Polyclonal Antibody (Pab)
Catalog # AP9630b**Specification**

BCL11A Antibody (C-term) - Product Information

Application	WB,E
Primary Accession	Q9H165
Reactivity	Human
Host	Rabbit
Clonality	Polyclonal
Isotype	Rabbit IgG
Calculated MW	91197
Antigen Region	806-835

BCL11A Antibody (C-term) - Additional Information**Gene ID** 53335**Other Names**

B-cell lymphoma/leukemia 11A, BCL-11A, B-cell CLL/lymphoma 11A, COUP-TF-interacting protein 1, Ecotropic viral integration site 9 protein homolog, EVI-9, Zinc finger protein 856, BCL11A, CTIP1, EVI9, KIAA1809, ZNF856

Target/Specificity

This BCL11A antibody is generated from rabbits immunized with a KLH conjugated synthetic peptide between 806-835 amino acids from the C-terminal region of human BCL11A.

Dilution

WB~~1:1000

E~~Use at an assay dependent concentration.

Format

Purified polyclonal antibody supplied in PBS with 0.09% (W/V) sodium azide. This antibody is purified through a protein A column, followed by peptide affinity purification.

Storage

Maintain refrigerated at 2-8°C for up to 2 weeks. For long term storage store at -20°C in small aliquots to prevent freeze-thaw cycles.

Precautions

BCL11A Antibody (C-term) is for research use only and not for use in diagnostic or therapeutic procedures.

BCL11A Antibody (C-term) - Protein Information**Name** BCL11A

Synonyms CTIP1, EVI9, KIAA1809, ZNF856

Function Transcription factor (PubMed:[16704730](#), PubMed:[29606353](#)). Associated with the BAF SWI/SNF chromatin remodeling complex (PubMed:[23644491](#), PubMed:[39607926](#)). Binds to the 5'-TGACCA-3' sequence motif in regulatory regions of target genes, including a distal promoter of the HBG1 hemoglobin subunit gamma-1 gene (PubMed:[29606353](#), PubMed:[39423807](#)). Involved in regulation of the developmental switch from gamma- to beta-globin, probably via direct repression of HBG1; hence indirectly repressing fetal hemoglobin (HbF) level (PubMed:[26375765](#), PubMed:[29606353](#), PubMed:[39423807](#), PubMed:[39607926](#)). Involved in brain development (PubMed:[27453576](#)). May play a role in hematopoiesis (By similarity). Essential factor in lymphopoiesis required for B-cell formation in fetal liver (By similarity). May function as a modulator of the transcriptional repression activity of NR2F2 (By similarity).

Cellular Location

Cytoplasm. Nucleus. Chromosome. Note=Associates with the nuclear body Colocalizes with SUMO1 and SENP2 in nuclear speckles (By similarity) [Isoform 2]: Cytoplasm. Nucleus Note=Predominantly localized in the nucleus in nuclear paraspeckles

Tissue Location

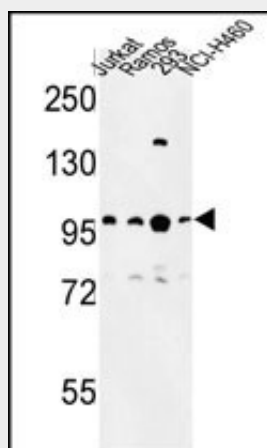
Expressed at high levels in brain, spleen thymus, bone marrow and testis. Expressed in CD34-positive myeloid precursor cells, B-cells, monocytes and megakaryocytes. Expression is tightly regulated during B-cell development.

BCL11A Antibody (C-term) - Protocols

Provided below are standard protocols that you may find useful for product applications.

- [Western Blot](#)
- [Blocking Peptides](#)
- [Dot Blot](#)
- [Immunohistochemistry](#)
- [Immunofluorescence](#)
- [Immunoprecipitation](#)
- [Flow Cytometry](#)
- [Cell Culture](#)

BCL11A Antibody (C-term) - Images



Western blot analysis of BCL11A Antibody (C-term) (Cat. #AP9630b) in Jurkat, Ramos, 293, NCI-H460 cell line lysates (35ug/lane). BCL11A (arrow) was detected using the purified Pab.

BCL11A Antibody (C-term) - Background

BCL11A is a C2H2 type zinc-finger protein by its similarity to the mouse Bcl11a/Evi9 protein. The corresponding mouse gene is a common site of retroviral integration in myeloid leukemia, and may function as a leukemia disease gene, in part, through its interaction with BCL6.

BCL11A Antibody (C-term) - References

Solovieff, N., et al. Blood 115(9):1815-1822(2010)
Nuinoon, M., et al. Hum. Genet. 127(3):303-314(2010)