

**NPW Antibody (C-term)**  
**Affinity Purified Rabbit Polyclonal Antibody (Pab)**  
**Catalog # AP9644b****Specification**

---

**NPW Antibody (C-term) - Product Information**

|                   |                        |
|-------------------|------------------------|
| Application       | WB,E                   |
| Primary Accession | <a href="#">Q8N729</a> |
| Reactivity        | Human                  |
| Host              | Rabbit                 |
| Clonality         | Polyclonal             |
| Isotype           | Rabbit IgG             |
| Calculated MW     | 18048                  |
| Antigen Region    | 121-150                |

**NPW Antibody (C-term) - Additional Information****Gene ID** 283869**Other Names**

Neuropeptide W, Preproprotein L8, hPPL8, Neuropeptide W-23, NPW23, hL8, Neuropeptide W-30, NPW30, hL8C, NPW, PPL8, PPNPW

**Target/Specificity**

This NPW antibody is generated from rabbits immunized with a KLH conjugated synthetic peptide between 121-150 amino acids from the C-terminal region of human NPW.

**Dilution**

WB~~1:1000

E~~Use at an assay dependent concentration.

**Format**

Purified polyclonal antibody supplied in PBS with 0.09% (W/V) sodium azide. This antibody is purified through a protein A column, followed by peptide affinity purification.

**Storage**

Maintain refrigerated at 2-8°C for up to 2 weeks. For long term storage store at -20°C in small aliquots to prevent freeze-thaw cycles.

**Precautions**

NPW Antibody (C-term) is for research use only and not for use in diagnostic or therapeutic procedures.

**NPW Antibody (C-term) - Protein Information****Name** NPW**Synonyms** PPL8, PPNPW

**Function** Plays a regulatory role in the organization of neuroendocrine signals accessing the anterior pituitary gland. Stimulates water drinking and food intake. May play a role in the hypothalamic response to stress (By similarity). NPW23 activates GPR7 and GPR8 more efficiently than NPW30.

#### Cellular Location

Secreted

#### Tissue Location

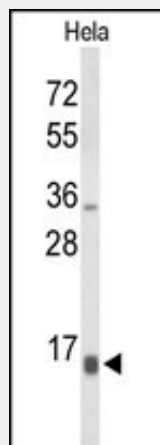
Detected in cerebrospinal fluid and urine (at protein level) (PubMed:25326458, PubMed:36213313, PubMed:37453717) Detected at high levels in the substantia nigra, fetal kidney and trachea; at lower levels in testis, uterus, ovary and placenta. Not detectable in many regions of the central nervous system. Also detected at high levels in lymphoblastic leukemia and colorectal adenocarcinoma

#### NPW Antibody (C-term) - Protocols

Provided below are standard protocols that you may find useful for product applications.

- [Western Blot](#)
- [Blocking Peptides](#)
- [Dot Blot](#)
- [Immunohistochemistry](#)
- [Immunofluorescence](#)
- [Immunoprecipitation](#)
- [Flow Cytometry](#)
- [Cell Culture](#)

#### NPW Antibody (C-term) - Images



Western blot analysis of NPW Antibody (C-term) (Cat. #AP9644b) in HeLa cell line lysates (35ug/lane). NPW (arrow) was detected using the purified Pab.

#### NPW Antibody (C-term) - Background

NPW is processed into 23- and 30-amino acid neuropeptides that bind and activate two G-protein coupled receptors in the central nervous system. The neuropeptides have been shown to enhance cortisol secretion from adrenal cells through the adenylate cyclase/protein kinase A signaling cascade. The preproprotein is translated using a non-AUG initiation codon that is inferred from analyses of the mouse ortholog. [provided by RefSeq].

### **NPW Antibody (C-term) - References**

Luttrell, L.M. Mol. Biotechnol. 39(3):239-264(2008)  
Singh, G., et al. Br. J. Pharmacol. 148(8):1033-1041(2006)