

PDHA1 Antibody
Affinity Purified Rabbit Polyclonal Antibody (Pab)
Catalog # AP9652d

Specification

PDHA1 Antibody - Product Information

Application	WB,E
Primary Accession	P08559
Other Accession	NP_000275.1
Reactivity	Human
Host	Rabbit
Clonality	Polyclonal
Isotype	Rabbit IgG

PDHA1 Antibody - Additional Information

Gene ID 5160

Other Names

Pyruvate dehydrogenase E1 component subunit alpha, somatic form, mitochondrial, PDHE1-A type I, PDHA1, PHE1A

Target/Specificity

This PDHA1 Antibody is generated from rabbits immunized with recombinant protein of human PDHA1.

Dilution

WB~~1:1000

E~~Use at an assay dependent concentration.

Format

Purified polyclonal antibody supplied in PBS with 0.09% (W/V) sodium azide. This antibody is purified through a protein A column, followed by peptide affinity purification.

Storage

Maintain refrigerated at 2-8°C for up to 2 weeks. For long term storage store at -20°C in small aliquots to prevent freeze-thaw cycles.

Precautions

PDHA1 Antibody is for research use only and not for use in diagnostic or therapeutic procedures.

PDHA1 Antibody - Protein Information

Name PDHA1

Synonyms PHE1A

Function The pyruvate dehydrogenase complex catalyzes the overall conversion of pyruvate to

acetyl-CoA and CO₂), and thereby links the glycolytic pathway to the tricarboxylic cycle.

Cellular Location

Mitochondrion matrix.

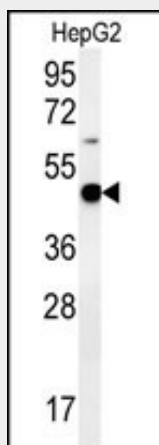
Tissue Location

Ubiquitous.

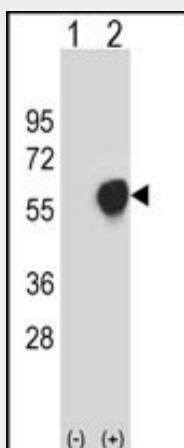
PDHA1 Antibody - Protocols

Provided below are standard protocols that you may find useful for product applications.

- [Western Blot](#)
- [Blocking Peptides](#)
- [Dot Blot](#)
- [Immunohistochemistry](#)
- [Immunofluorescence](#)
- [Immunoprecipitation](#)
- [Flow Cytometry](#)
- [Cell Culture](#)

PDHA1 Antibody - Images

PDHA1 Antibody (Cat. #AP9652d) western blot analysis in HepG2 cell line lysates (35ug/lane). This demonstrates the PDHA1 antibody detected the PDHA1 protein (arrow).



Western blot analysis of PDHA1 (arrow) using rabbit polyclonal PDHA1 Antibody (Cat. #AP9652d). 293 cell lysates (2 ug/lane) either non-transfected (Lane 1) or transiently transfected (Lane 2) with the PDHA1 gene.