

**FXRD1 Antibody (C-term)**  
**Affinity Purified Rabbit Polyclonal Antibody (Pab)**  
**Catalog # AP9655b****Specification**

---

**FXRD1 Antibody (C-term) - Product Information**

Application	WB,E
Primary Accession	<a href="#">O96CU9</a>
Reactivity	Human
Host	Rabbit
Clonality	Polyclonal
Isotype	Rabbit IgG
Calculated MW	53812
Antigen Region	347-377

**FXRD1 Antibody (C-term) - Additional Information****Gene ID** 55572**Other Names**

FAD-dependent oxidoreductase domain-containing protein 1, 1---, FOXRED1

**Target/Specificity**

This FXRD1 antibody is generated from rabbits immunized with a KLH conjugated synthetic peptide between 347-377 amino acids from the C-terminal region of human FXRD1.

**Dilution**

WB~~1:1000

E~~Use at an assay dependent concentration.

**Format**

Purified polyclonal antibody supplied in PBS with 0.09% (W/V) sodium azide. This antibody is purified through a protein A column, followed by peptide affinity purification.

**Storage**

Maintain refrigerated at 2-8°C for up to 2 weeks. For long term storage store at -20°C in small aliquots to prevent freeze-thaw cycles.

**Precautions**

FXRD1 Antibody (C-term) is for research use only and not for use in diagnostic or therapeutic procedures.

**FXRD1 Antibody (C-term) - Protein Information****Name** FOXRED1 ([HGNC:26927](#))

**Function** Required for the assembly of the mitochondrial membrane respiratory chain NADH dehydrogenase (Complex I) (PubMed:[20858599](#), PubMed:[25678554](#)). Involved in mid-late stages

of complex I assembly (PubMed:[25678554](#)).

#### **Cellular Location**

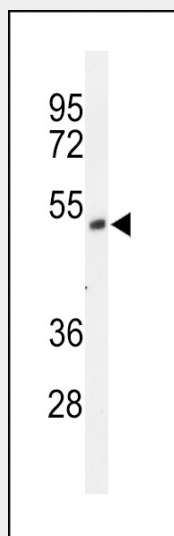
Mitochondrion inner membrane; Single-pass membrane protein. Note=According to a report, it is associated with the matrix face of the mitochondrial inner membrane and does not contain any transmembrane region. However, one transmembrane domain is clearly predicted by different methods (Probable)

#### **FXRD1 Antibody (C-term) - Protocols**

Provided below are standard protocols that you may find useful for product applications.

- [Western Blot](#)
- [Blocking Peptides](#)
- [Dot Blot](#)
- [Immunohistochemistry](#)
- [Immunofluorescence](#)
- [Immunoprecipitation](#)
- [Flow Cytometry](#)
- [Cell Culture](#)

#### **FXRD1 Antibody (C-term) - Images**



Western blot analysis of FXRD1 Antibody (C-term) (Cat. #AP9655b) in NCI-H460 cell line lysates (35ug/lane). FXRD1 (arrow) was detected using the purified Pab.

#### **FXRD1 Antibody (C-term) - References**

Lehner, B., et al. Genome Res. 14(7):1315-1323(2004)  
Simpson, J.C., et al. EMBO Rep. 1(3):287-292(2000)