

ECHDC1 Antibody (C-term)
Affinity Purified Rabbit Polyclonal Antibody (Pab)
Catalog # AP9659b**Specification**

ECHDC1 Antibody (C-term) - Product Information

Application	WB,E
Primary Accession	O9NTX5
Other Accession	Q6AYG5
Reactivity	Human, Mouse
Predicted	Rat
Host	Rabbit
Clonality	Polyclonal
Isotype	Rabbit IgG
Calculated MW	33698
Antigen Region	254-283

ECHDC1 Antibody (C-term) - Additional Information**Gene ID** 55862**Other Names**Ethylmalonyl-CoA decarboxylase, Enoyl-CoA hydratase domain-containing protein 1,
Methylmalonyl-CoA decarboxylase, MMCD, ECHDC1**Target/Specificity**

This ECHDC1 antibody is generated from rabbits immunized with a KLH conjugated synthetic peptide between 254-283 amino acids from the C-terminal region of human ECHDC1.

Dilution

WB~~1:1000

E~~Use at an assay dependent concentration.

Format

Purified polyclonal antibody supplied in PBS with 0.09% (W/V) sodium azide. This antibody is purified through a protein A column, followed by peptide affinity purification.

Storage

Maintain refrigerated at 2-8°C for up to 2 weeks. For long term storage store at -20°C in small aliquots to prevent freeze-thaw cycles.

Precautions

ECHDC1 Antibody (C-term) is for research use only and not for use in diagnostic or therapeutic procedures.

ECHDC1 Antibody (C-term) - Protein Information**Name** ECHDC1

Function Decarboxylates ethylmalonyl-CoA, a potentially toxic metabolite, to form butyryl-CoA, suggesting it might be involved in metabolite proofreading (PubMed:[22016388](#)). Acts preferentially on (S)- ethylmalonyl-CoA but also has some activity on the (R)-isomer (By similarity). Also has methylmalonyl-CoA decarboxylase activity at lower level (By similarity).

Cellular Location

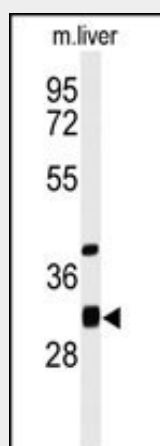
Cytoplasm, cytosol.

ECHDC1 Antibody (C-term) - Protocols

Provided below are standard protocols that you may find useful for product applications.

- [Western Blot](#)
- [Blocking Peptides](#)
- [Dot Blot](#)
- [Immunohistochemistry](#)
- [Immunofluorescence](#)
- [Immunoprecipitation](#)
- [Flow Cytometry](#)
- [Cell Culture](#)

ECHDC1 Antibody (C-term) - Images



Western blot analysis of ECHDC1 Antibody (C-term) (Cat. #AP9659b) in mouse liver tissue lysates (35ug/lane). ECHDC1 (arrow) was detected using the purified Pab.

ECHDC1 Antibody (C-term) - Background

ECHDC1 belongs to the enoyl-CoA hydratase/isomerase family. There are two named isoforms.

ECHDC1 Antibody (C-term) - References

Zheng, W., et al. *Cancer Epidemiol. Biomarkers Prev.* 18(10):2761-2764(2009)
Menachem, T.D., et al. *Fam. Cancer* 8(4):399-402(2009)