

KCE1L Antibody (Center)
Affinity Purified Rabbit Polyclonal Antibody (Pab)
Catalog # AP9666c**Specification**

KCE1L Antibody (Center) - Product Information

Application	WB,E
Primary Accession	O9UJ90
Reactivity	Human
Host	Rabbit
Clonality	Polyclonal
Isotype	Rabbit IgG
Calculated MW	14993
Antigen Region	67-96

KCE1L Antibody (Center) - Additional Information**Gene ID** 23630**Other Names**

Potassium voltage-gated channel subfamily E member 1-like protein, AMME syndrome candidate gene 2 protein, KCNE1L, AMMECR2

Target/Specificity

This KCE1L antibody is generated from rabbits immunized with a KLH conjugated synthetic peptide between 67-96 amino acids from the Central region of human KCE1L.

Dilution

WB~~1:1000

E~~Use at an assay dependent concentration.

Format

Purified polyclonal antibody supplied in PBS with 0.09% (W/V) sodium azide. This antibody is purified through a protein A column, followed by peptide affinity purification.

Storage

Maintain refrigerated at 2-8°C for up to 2 weeks. For long term storage store at -20°C in small aliquots to prevent freeze-thaw cycles.

Precautions

KCE1L Antibody (Center) is for research use only and not for use in diagnostic or therapeutic procedures.

KCE1L Antibody (Center) - Protein Information**Name** KCNE5**Synonyms** AMMECR2, KCNE1L {ECO:0000303|PubMed:1049

Function Potassium channel ancillary subunit that is essential for generation of some native K(+) currents by virtue of formation of heteromeric ion channel complex with voltage-gated potassium (Kv) channel pore-forming alpha subunits. Functions as an inhibitory beta- subunit of the repolarizing cardiac potassium ion channel KCNQ1.

Cellular Location

Membrane; Single- pass type I membrane protein

Tissue Location

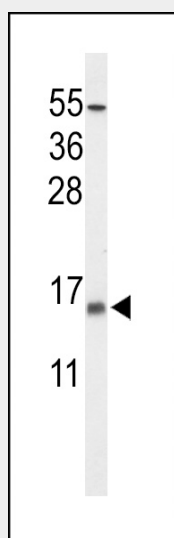
Highly expressed in heart, skeletal muscle, brain, spinal cord and placenta.

KCE1L Antibody (Center) - Protocols

Provided below are standard protocols that you may find useful for product applications.

- [Western Blot](#)
- [Blocking Peptides](#)
- [Dot Blot](#)
- [Immunohistochemistry](#)
- [Immunofluorescence](#)
- [Immunoprecipitation](#)
- [Flow Cytometry](#)
- [Cell Culture](#)

KCE1L Antibody (Center) - Images



Western blot analysis of KCE1L Antibody (Center) (Cat. #AP9666c) in NCI-H460 cell line lysates (35ug/lane). KCE1L (arrow) was detected using the purified Pab.

KCE1L Antibody (Center) - Background

Voltage-gated potassium (Kv) channels represent the most complex class of voltage-gated ion channels from both functional and structural standpoints. Their diverse functions include regulating neurotransmitter release, heart rate, insulin secretion, neuronal excitability, epithelial electrolyte transport, smooth muscle contraction, and cell volume. This gene encodes a membrane protein which has sequence similarity to the KCNE1 gene product, a member of the potassium channel, voltage-gated, isk-related subfamily. This intronless gene is deleted in AMME contiguous gene

syndrome and may be involved in the cardiac and neurologic abnormalities found in the AMME contiguous gene syndrome.

KCE1L Antibody (Center) - References

Ravn, L.S., et al. Heart Rhythm 5(3):427-435(2008)
Lundquist, A.L., et al. Genomics 87(1):119-128(2006)
Ravn, L.S., et al. Am. J. Cardiol. 96(3):405-407(2005)
Yang, Y., et al. Am. J. Hum. Genet. 75(5):899-905(2004)
Hofman-Bang, J., et al. Clin. Chim. Acta 345 (1-2), 49-53 (2004)
Piccini, M., et al. Genomics 60(3):251-257(1999)