

NEU1 Antibody (Center)
Purified Rabbit Polyclonal Antibody (Pab)
Catalog # AP9697c**Specification**

NEU1 Antibody (Center) - Product Information

Application	WB, IHC-P, FC,E
Primary Accession	P01178
Reactivity	Human
Host	Rabbit
Clonality	Polyclonal
Isotype	Rabbit IgG
Antigen Region	11-40

NEU1 Antibody (Center) - Additional Information**Gene ID** 5020**Other Names**

Oxytocin-neurophysin 1, OT-NPI, Oxytocin, Ocytocin, Neurophysin 1, OXT, OT

Target/Specificity

This NEU1 antibody is generated from rabbits immunized with a KLH conjugated synthetic peptide between 11-40 amino acids from the Central region of human NEU1.

Dilution

WB~~1:1000
IHC-P~~1:50~100
FC~~1:10~50

Format

Purified polyclonal antibody supplied in PBS with 0.09% (W/V) sodium azide. This antibody is prepared by Saturated Ammonium Sulfate (SAS) precipitation followed by dialysis against PBS.

Storage

Maintain refrigerated at 2-8°C for up to 2 weeks. For long term storage store at -20°C in small aliquots to prevent freeze-thaw cycles.

Precautions

NEU1 Antibody (Center) is for research use only and not for use in diagnostic or therapeutic procedures.

NEU1 Antibody (Center) - Protein Information**Name** OXT**Synonyms** OT

Function Neurophysin 1 specifically binds oxytocin.

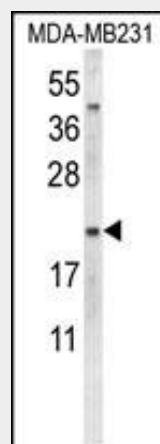
Cellular Location
Secreted.

NEU1 Antibody (Center) - Protocols

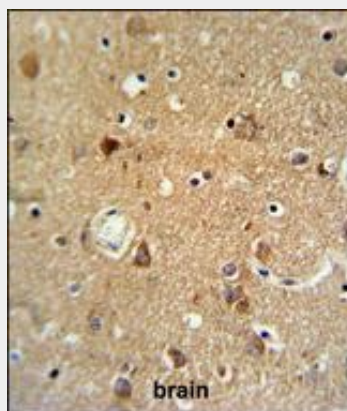
Provided below are standard protocols that you may find useful for product applications.

- [Western Blot](#)
- [Blocking Peptides](#)
- [Dot Blot](#)
- [Immunohistochemistry](#)
- [Immunofluorescence](#)
- [Immunoprecipitation](#)
- [Flow Cytometry](#)
- [Cell Culture](#)

NEU1 Antibody (Center) - Images

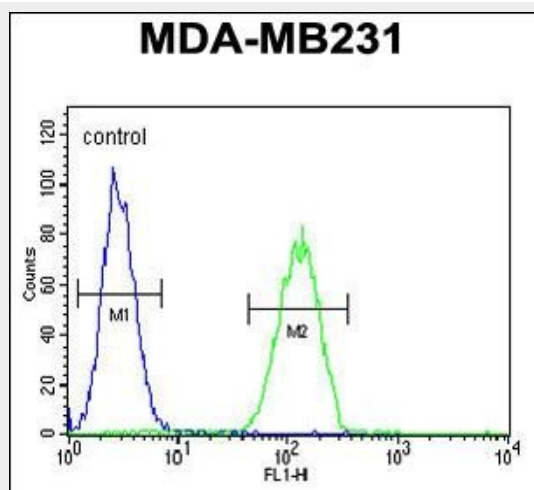


Western blot analysis of NEU1 Antibody (Center) (Cat. #AP9697c) in MDA-MB231 cell line lysates (35ug/lane). NEU1 (arrow) was detected using the purified Pab.



NEU1 Antibody (Center) (Cat. #AP9697c) IHC analysis in formalin fixed and paraffin embedded brain tissue followed by peroxidase conjugation of the secondary antibody and DAB staining. This data demonstrates the use of the NEU1 Antibody (Center) for immunohistochemistry. Clinical

relevance has not been evaluated.



NEU1 Antibody (Center) (Cat. #AP9697c) flow cytometric analysis of MDA-MB231 cells (right histogram) compared to a negative control (left histogram). FITC-conjugated goat-anti-rabbit secondary antibodies were used for the analysis.

NEU1 Antibody (Center) - Background

There are two proteins encoded by this gene, oxytocin and neurophysin I. Oxytocin is posterior pituitary hormone which is synthesized as an inactive precursor in the hypothalamus along with its carrier protein neurophysin I. Together with neurophysin, it is packaged into neurosecretory vesicles and transported axonally to the nerve endings in the neurohypophysis, where it is either stored or secreted into the bloodstream. The precursor seems to be activated while it is being transported along the axon to the posterior pituitary. This hormone contracts smooth muscle during parturition and lactation. It is also involved in cognition, tolerance, adaptation and complex sexual and maternal behaviour, as well as in the regulation of water excretion and cardiovascular functions.

NEU1 Antibody (Center) - References

- Rao, V.V., et al. Cytogenet. Cell Genet. 61(4):271-273(1992)
- Ivell, R., et al. Endocrinology 127(6):2990-2996(1990)
- Wood, S.P., et al. Science 232(4750):633-636(1986)
- Sausville, E., et al. J. Biol. Chem. 260(18):10236-10241(1985)