

**ABHEB Antibody (C-term)**  
**Affinity Purified Rabbit Polyclonal Antibody (Pab)**  
**Catalog # AP9700b****Specification**

---

**ABHEB Antibody (C-term) - Product Information**

Application	FC, IHC-P, WB,E
Primary Accession	<a href="#">O96IU4</a>
Other Accession	<a href="#">A7YY28</a>
Reactivity	Human
Predicted	Bovine
Host	Rabbit
Clonality	Polyclonal
Isotype	Rabbit IgG
Calculated MW	22346
Antigen Region	150-179

**ABHEB Antibody (C-term) - Additional Information****Gene ID** 84836**Other Names**

Alpha/beta hydrolase domain-containing protein 14B, Abhydrolase domain-containing protein 14B, 3---, CCG1-interacting factor B, ABHD14B, CIB

**Target/Specificity**

This ABHEB antibody is generated from rabbits immunized with a KLH conjugated synthetic peptide between 150-179 amino acids from the C-terminal region of human ABHEB.

**Dilution**

FC~~1:10~50

IHC-P~~1:50~100

WB~~1:1000

E~~Use at an assay dependent concentration.

**Format**

Purified polyclonal antibody supplied in PBS with 0.09% (W/V) sodium azide. This antibody is purified through a protein A column, followed by peptide affinity purification.

**Storage**

Maintain refrigerated at 2-8°C for up to 2 weeks. For long term storage store at -20°C in small aliquots to prevent freeze-thaw cycles.

**Precautions**

ABHEB Antibody (C-term) is for research use only and not for use in diagnostic or therapeutic procedures.

**ABHEB Antibody (C-term) - Protein Information**

**Name** ABHD14B {ECO:0000303|PubMed:31478652, ECO:0000312|HGNC:HGNC:28235}

**Function** Acts as an atypical protein-lysine deacetylase in vitro (PubMed:[31478652](#)). Catalyzes the deacetylation of lysine residues using CoA as substrate, generating acetyl-CoA and the free amine of protein- lysine residues (PubMed:[31478652](#)). Additional experiments are however required to confirm the protein-lysine deacetylase activity in vivo (Probable). Has hydrolase activity towards various surrogate p- nitrophenyl (pNp) substrates, such as pNp-butyrate, pNp-acetate and pNp-octanoate in vitro, with a strong preference for pNp-acetate (PubMed:[14672934](#), PubMed:[31478652](#)). May activate transcription (PubMed:[14672934](#)).

**Cellular Location**

Cytoplasm. Nucleus. Note=Predominantly cytoplasmic

**Tissue Location**

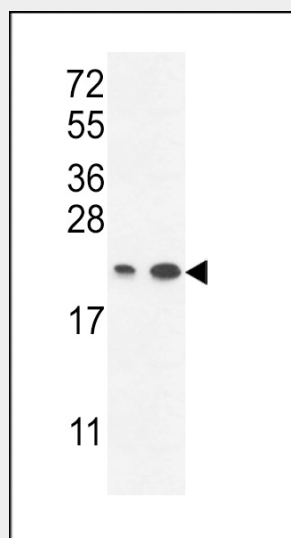
Ubiquitous (PubMed:14672934). Detected in spleen, thymus, prostate, testis, ovary, small intestine, colon, peripheral blood leukocyte, heart, placenta, lung, liver, skeletal muscle, pancreas and kidney (PubMed:14672934).

**ABHEB Antibody (C-term) - Protocols**

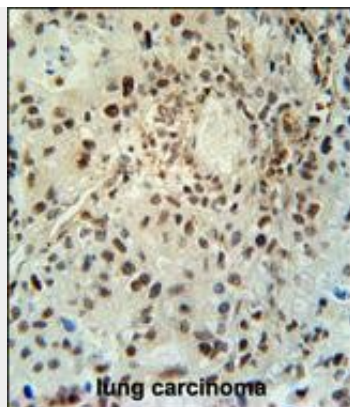
Provided below are standard protocols that you may find useful for product applications.

- [Western Blot](#)
- [Blocking Peptides](#)
- [Dot Blot](#)
- [Immunohistochemistry](#)
- [Immunofluorescence](#)
- [Immunoprecipitation](#)
- [Flow Cytometry](#)
- [Cell Culture](#)

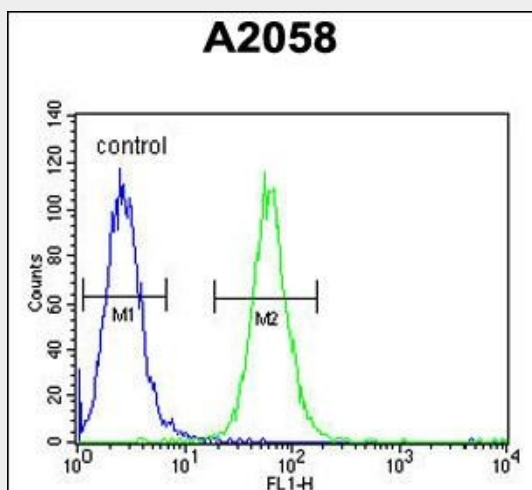
**ABHEB Antibody (C-term) - Images**



ABHEB Antibody (C-term) (Cat. #AP9700b) western blot analysis in A2058,T47D cell line lysates (35ug/lane). This demonstrates the ABHEB antibody detected the ABHEB protein (arrow).



ABHEB Antibody (C-term) (Cat. #AP9700b) immunohistochemistry analysis in formalin fixed and paraffin embedded human lung carcinoma followed by peroxidase conjugation of the secondary antibody and DAB staining. This data demonstrates the use of the ABHEB Antibody (C-term) for immunohistochemistry. Clinical relevance has not been evaluated.



ABHEB Antibody (C-term) (Cat. #AP9700b) flow cytometric analysis of A2058 cells (right histogram) compared to a negative control cell (left histogram). FITC-conjugated goat-anti-rabbit secondary antibodies were used for the analysis.

#### **ABHEB Antibody (C-term) - Background**

ABHEB has hydrolase activity towards p-nitrophenyl butyrate (in vitro). It may activate transcription.

#### **ABHEB Antibody (C-term) - References**

Padmanabhan, B., et al. Acta Crystallogr. D Biol. Crystallogr. 56 (PT 11), 1479-1481 (2000)