

INSC Antibody (C-term)
Affinity Purified Rabbit Polyclonal Antibody (Pab)
Catalog # AP9702B**Specification**

INSC Antibody (C-term) - Product Information

Application	IHC-P, WB,E
Primary Accession	Q1MX18
Other Accession	NP_001027024.3 , NP_001036001.1
Reactivity	Human, Mouse
Host	Rabbit
Clonality	Polyclonal
Isotype	Rabbit IgG
Calculated MW	63469
Antigen Region	409-437

INSC Antibody (C-term) - Additional Information**Gene ID** 387755**Other Names**

Protein inscuteable homolog, INSC

Target/Specificity

This INSC antibody is generated from rabbits immunized with a KLH conjugated synthetic peptide between 409-437 amino acids from the C-terminal region of human INSC.

Dilution

IHC-P~~1:50~100

WB~~1:1000

E~~Use at an assay dependent concentration.

Format

Purified polyclonal antibody supplied in PBS with 0.09% (W/V) sodium azide. This antibody is purified through a protein A column, followed by peptide affinity purification.

Storage

Maintain refrigerated at 2-8°C for up to 2 weeks. For long term storage store at -20°C in small aliquots to prevent freeze-thaw cycles.

Precautions

INSC Antibody (C-term) is for research use only and not for use in diagnostic or therapeutic procedures.

INSC Antibody (C-term) - Protein Information**Name** INSC

Function May function as an adapter linking the Par3 complex to the GPM1/GPM2 complex (PubMed:[16458856](#)). Involved in spindle orientation during mitosis. May regulate cell proliferation and differentiation in the developing nervous system. May play a role in the asymmetric division of fibroblasts and participate in the process of stratification of the squamous epithelium (By similarity).

Cellular Location

Cytoplasm. Cytoplasm, cell cortex. Note=Uniformly distributed in the cytoplasm during interphase. During metaphase, detected in the cell cortex, adjacent to the mitotic spindle poles

Tissue Location

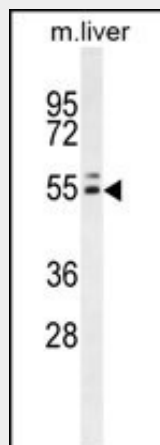
Isoform 1 is expressed in various tissues with stronger expression in liver, kidney and small intestine. Isoform 2 is abundantly expressed in small intestine and to a lower extent in lung and pancreas.

INSC Antibody (C-term) - Protocols

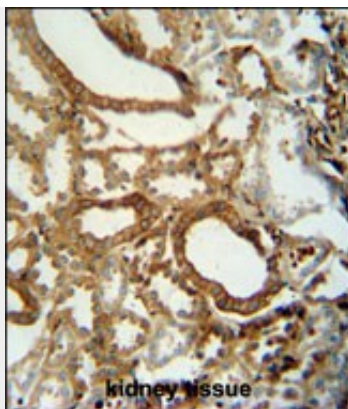
Provided below are standard protocols that you may find useful for product applications.

- [Western Blot](#)
- [Blocking Peptides](#)
- [Dot Blot](#)
- [Immunohistochemistry](#)
- [Immunofluorescence](#)
- [Immunoprecipitation](#)
- [Flow Cytometry](#)
- [Cell Culture](#)

INSC Antibody (C-term) - Images



INSC Antibody (C-term) (Cat. #AP9702b) western blot analysis in mouse liver tissue lysates (35ug/lane). This demonstrates the INSC antibody detected the INSC protein (arrow).



INSC antibody (C-term) (Cat. #AP9702b) immunohistochemistry analysis in formalin fixed and paraffin embedded human kidney tissue followed by peroxidase conjugation of the secondary antibody and DAB staining. This data demonstrates the use of the INSC antibody (C-term) for immunohistochemistry. Clinical relevance has not been evaluated.

INSC Antibody (C-term) - Background

In *Drosophila*, neuroblasts divide asymmetrically into another neuroblast at the apical side and a smaller ganglion mother cell on the basal side. Cell polarization is precisely regulated by 2 apically localized multiprotein signaling complexes that are tethered by Inscuteable, which regulates their apical localization (Izaki et al., 2006 [PubMed 16458856]).

INSC Antibody (C-term) - References

Rose, J.E., et al. Mol. Med. 16 (7-8), 247-253 (2010) :
Vural, A., et al. Mol. Cell. Biol. 30(6):1528-1540(2010)
Rivadeneira, F., et al. Nat. Genet. 41(11):1199-1206(2009)
Izaki, T., et al. Biochem. Biophys. Res. Commun. 341(4):1001-1006(2006)
Katoh, M., et al. Int. J. Mol. Med. 11(1):111-116(2003)