

HES7 Antibody (N-term)
Affinity Purified Rabbit Polyclonal Antibody (Pab)
Catalog # AP9712a**Specification**

HES7 Antibody (N-term) - Product Information

Application	WB,E
Primary Accession	Q9BYE0
Other Accession	Q8BKT2
Reactivity	Human, Mouse
Host	Rabbit
Clonality	Polyclonal
Isotype	Rabbit IgG
Calculated MW	24899
Antigen Region	26-55

HES7 Antibody (N-term) - Additional Information**Gene ID** 84667**Other Names**

Transcription factor HES-7, hHes7, Class B basic helix-loop-helix protein 37, bHLHb37, Hairy and enhancer of split 7, bHLH factor Hes7, HES7, BHLHB37

Target/Specificity

This HES7 antibody is generated from rabbits immunized with a KLH conjugated synthetic peptide between 26-55 amino acids from the N-terminal region of human HES7.

Dilution

WB~~1:1000

Format

Purified polyclonal antibody supplied in PBS with 0.09% (W/V) sodium azide. This antibody is purified through a protein A column, followed by peptide affinity purification.

Storage

Maintain refrigerated at 2-8°C for up to 2 weeks. For long term storage store at -20°C in small aliquots to prevent freeze-thaw cycles.

Precautions

HES7 Antibody (N-term) is for research use only and not for use in diagnostic or therapeutic procedures.

HES7 Antibody (N-term) - Protein Information**Name** HES7**Synonyms** BHLHB37

Function Transcriptional repressor. Represses transcription from both N box- and E box-containing promoters. May with HES1, cooperatively regulate somite formation in the presomitic mesoderm (PSM). May function as a segmentation clock, which is essential for coordinated somite segmentation (By similarity).

Cellular Location

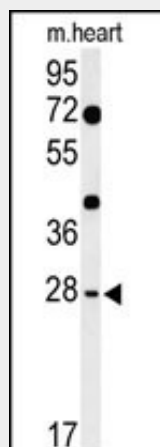
Nucleus.

HES7 Antibody (N-term) - Protocols

Provided below are standard protocols that you may find useful for product applications.

- [Western Blot](#)
- [Blocking Peptides](#)
- [Dot Blot](#)
- [Immunohistochemistry](#)
- [Immunofluorescence](#)
- [Immunoprecipitation](#)
- [Flow Cytometry](#)
- [Cell Culture](#)

HES7 Antibody (N-term) - Images



Western blot analysis of HES7 Antibody (N-term) (Cat. #AP9712a) in mouse heart tissue lysates (35ug/lane). HES7 (arrow) was detected using the purified Pab.

HES7 Antibody (N-term) - Background

HES7 is a member of the hairy and enhancer of split family of bHLH transcription factors. The protein functions as a transcriptional repressor, and is implicated in correct patterning of the axial skeleton.

HES7 Antibody (N-term) - References

- Sparrow, D.B., et al. Hum. Mol. Genet. 17(23):3761-3766(2008)
Olsen, J.V., et al. Cell 127(3):635-648(2006)
Olsen, J.V., et al. Cell 127(3):635-648(2006)