

RPS25 Antibody (N-term)
Affinity Purified Rabbit Polyclonal Antibody (Pab)
Catalog # AP9713a**Specification**

RPS25 Antibody (N-term) - Product Information

Application	WB,E
Primary Accession	P62851
Other Accession	P62853 , P62852 , Q56JX5 , NP_001019 , Q6Q311 , G1TDB3
Reactivity	Human
Predicted	Bovine, Mouse, Rabbit, Rat, Sheep
Host	Rabbit
Clonality	Polyclonal
Isotype	Rabbit IgG
Calculated MW	13742
Antigen Region	1-30

RPS25 Antibody (N-term) - Additional Information**Gene ID** 6230**Other Names**

40S ribosomal protein S25, RPS25

Target/Specificity

This RPS25 antibody is generated from rabbits immunized with a KLH conjugated synthetic peptide between 1-30 amino acids from the N-terminal region of human RPS25.

Dilution

WB~~1:1000

E~~Use at an assay dependent concentration.

Format

Purified polyclonal antibody supplied in PBS with 0.09% (W/V) sodium azide. This antibody is purified through a protein A column, followed by peptide affinity purification.

Storage

Maintain refrigerated at 2-8°C for up to 2 weeks. For long term storage store at -20°C in small aliquots to prevent freeze-thaw cycles.

Precautions

RPS25 Antibody (N-term) is for research use only and not for use in diagnostic or therapeutic procedures.

RPS25 Antibody (N-term) - Protein Information**Name** RPS25

Function Component of the small ribosomal subunit (PubMed:[23636399](#)). The ribosome is a large ribonucleoprotein complex responsible for the synthesis of proteins in the cell (PubMed:[23636399](#)).

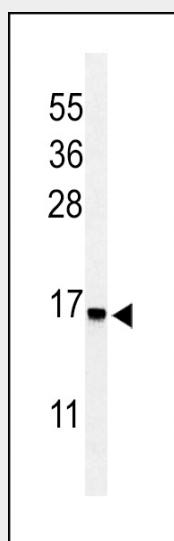
Cellular Location
Cytoplasm.

RPS25 Antibody (N-term) - Protocols

Provided below are standard protocols that you may find useful for product applications.

- [Western Blot](#)
- [Blocking Peptides](#)
- [Dot Blot](#)
- [Immunohistochemistry](#)
- [Immunofluorescence](#)
- [Immunoprecipitation](#)
- [Flow Cytometry](#)
- [Cell Culture](#)

RPS25 Antibody (N-term) - Images



Western blot analysis of RPS25 Antibody (N-term) (Cat. #AP9713a) in Jurkat cell line lysates (35ug/lane). RPS25 (arrow) was detected using the purified Pab.

RPS25 Antibody (N-term) - Background

Ribosomes, the organelles that catalyze protein synthesis, consist of a small 40S subunit and a large 60S subunit. Together these subunits are composed of 4 RNA species and approximately 80 structurally distinct proteins. This gene encodes a ribosomal protein that is a component of the 40S subunit. The protein belongs to the S25E family of ribosomal proteins. It is located in the cytoplasm.

RPS25 Antibody (N-term) - References

- Stelzl, U., et al. Cell 122(6):957-968(2005)
Yu, Y., et al. Protein Sci. 14(6):1438-1446(2005)
Lehner, B., et al. Genome Res. 14(7):1315-1323(2004)