

LRRTM1 Antibody (Center)
Affinity Purified Rabbit Polyclonal Antibody (Pab)
Catalog # AP9720c**Specification**

LRRTM1 Antibody (Center) - Product Information

Application	WB, IHC-P,E
Primary Accession	Q86UE6
Other Accession	D4A6D8 , Q8K377 , A1A4H9
Reactivity	Human, Mouse
Predicted	Bovine, Rat
Host	Rabbit
Clonality	Polyclonal
Isotype	Rabbit IgG
Antigen Region	88-117

LRRTM1 Antibody (Center) - Additional Information**Gene ID** 347730**Other Names**

Leucine-rich repeat transmembrane neuronal protein 1, LRRTM1

Target/Specificity

This LRRTM1 antibody is generated from rabbits immunized with a KLH conjugated synthetic peptide between 88-117 amino acids from the Central region of human LRRTM1.

DilutionWB~~1:1000
IHC-P~~1:50~100**Format**

Purified polyclonal antibody supplied in PBS with 0.09% (W/V) sodium azide. This antibody is purified through a protein A column, followed by peptide affinity purification.

Storage

Maintain refrigerated at 2-8°C for up to 2 weeks. For long term storage store at -20°C in small aliquots to prevent freeze-thaw cycles.

Precautions

LRRTM1 Antibody (Center) is for research use only and not for use in diagnostic or therapeutic procedures.

LRRTM1 Antibody (Center) - Protein Information**Name** LRRTM1**Function** Exhibits strong synaptogenic activity, restricted to excitatory presynaptic differentiation,

acting at both pre- and postsynaptic level.

Cellular Location

Cell membrane; Single-pass type I membrane protein. Postsynaptic cell membrane; Single-pass type I membrane protein

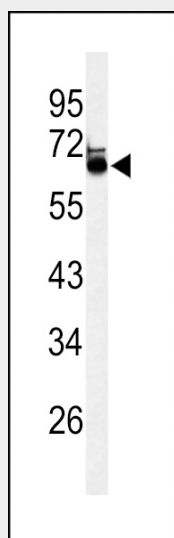
Tissue Location

Predominantly expressed in forebrain regions including thalamus and cerebral cortex.

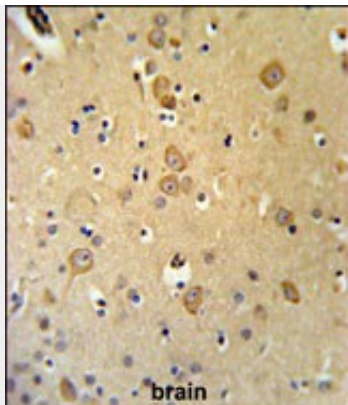
LRRTM1 Antibody (Center) - Protocols

Provided below are standard protocols that you may find useful for product applications.

- [Western Blot](#)
- [Blocking Peptides](#)
- [Dot Blot](#)
- [Immunohistochemistry](#)
- [Immunofluorescence](#)
- [Immunoprecipitation](#)
- [Flow Cytometry](#)
- [Cell Culture](#)

LRRTM1 Antibody (Center) - Images

Western blot analysis of LRRTM1 Antibody (Center) (Cat. #AP9720c) in mouse brain tissue lysates (35ug/lane). LRRTM1 (arrow) was detected using the purified Pab.



LRRTM1 Antibody (Center) (Cat. #AP9720c) IHC analysis in formalin fixed and paraffin embedded brain tissue followed by peroxidase conjugation of the secondary antibody and DAB staining. This data demonstrates the use of the LRRTM1 Antibody (Center) for immunohistochemistry. Clinical relevance has not been evaluated.

LRRTM1 Antibody (Center) - Background

LRRTM1 may play a role during the development of specific forebrain structures by influencing neuronal differentiation and connectivity, with a possible role in intracellular trafficking within axons.

LRRTM1 Antibody (Center) - References

Francks, C. Laterality 14(1):11-16(2009)
Crow, T.J., et al. Laterality 14(1):3-10(2009)
McManus, C., et al. Laterality 14(1):1-2(2009)