

CLDND1 Antibody (Center)
Affinity Purified Rabbit Polyclonal Antibody (Pab)
Catalog # AP9729c**Specification**

CLDND1 Antibody (Center) - Product Information

Application	WB,E
Primary Accession	O9NY35
Other Accession	Q4R4Z3
Reactivity	Human, Mouse
Predicted	Monkey
Host	Rabbit
Clonality	Polyclonal
Isotype	Rabbit IgG
Calculated MW	28603
Antigen Region	43-72

CLDND1 Antibody (Center) - Additional Information**Gene ID** 56650**Other Names**

Claudin domain-containing protein 1, Membrane protein GENX-3745, CLDND1, C3orf4

Target/Specificity

This CLDND1 antibody is generated from rabbits immunized with a KLH conjugated synthetic peptide between 43-72 amino acids from the Central region of human CLDND1.

Dilution

WB~~1:1000

E~~Use at an assay dependent concentration.

Format

Purified polyclonal antibody supplied in PBS with 0.09% (W/V) sodium azide. This antibody is purified through a protein A column, followed by peptide affinity purification.

Storage

Maintain refrigerated at 2-8°C for up to 2 weeks. For long term storage store at -20°C in small aliquots to prevent freeze-thaw cycles.

Precautions

CLDND1 Antibody (Center) is for research use only and not for use in diagnostic or therapeutic procedures.

CLDND1 Antibody (Center) - Protein Information**Name** CLDND1

Synonyms C3orf4**Cellular Location**

Membrane; Multi-pass membrane protein

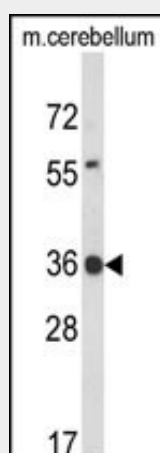
Tissue Location

Widely distributed in the adult CNS with highest expression in the corpus callosum, caudate nucleus, cerebral cortex, medulla, putamen, spinal cord, substantia nigra and subthalamic nucleus. Weak expression was detected in the adult heart

CLDND1 Antibody (Center) - Protocols

Provided below are standard protocols that you may find useful for product applications.

- [Western Blot](#)
- [Blocking Peptides](#)
- [Dot Blot](#)
- [Immunohistochemistry](#)
- [Immunofluorescence](#)
- [Immunoprecipitation](#)
- [Flow Cytometry](#)
- [Cell Culture](#)

CLDND1 Antibody (Center) - Images

Western blot analysis of CLDND1 Antibody (Center) (Cat. #AP9729c) in mouse cerebellum tissue lysates (35ug/lane). CLDND1 (arrow) was detected using the purified Pab.

CLDND1 Antibody (Center) - Background

CLDND1 is widely distributed in the adult CNS with highest expression in the corpus callosum, caudate nucleus, cerebral cortex, medulla, putamen, spinal cord, substantia nigra and subthalamic nucleus. Weak expression has been detected in the adult heart. There are 2 named isoforms produced by alternative splicing.

CLDND1 Antibody (Center) - References

Liu, Y., et al. Lung Cancer 56(3):307-317(2007)
Fayein, N.A., et al. Gene 289 (1-2), 119-129 (2002)