

P2R3C Antibody (N-term)
Affinity Purified Rabbit Polyclonal Antibody (Pab)
Catalog # AP9743a

Specification

P2R3C Antibody (N-term) - Product Information

Application	IHC-P, WB,E
Primary Accession	Q969Q6
Other Accession	Q6AXZ3 , Q9JK24 , Q5E9G1
Reactivity	Human
Predicted	Bovine, Mouse, Rat
Host	Rabbit
Clonality	Polyclonal
Isotype	Rabbit IgG
Calculated MW	53316
Antigen Region	50-79

P2R3C Antibody (N-term) - Additional Information

Gene ID 55012

Other Names

Serine/threonine-protein phosphatase 2A regulatory subunit B'' subunit gamma, Protein phosphatase subunit G5PR, Rhabdomyosarcoma antigen MU-RMS-406A/6C, PPP2R3C, C14orf10, G5PR

Target/Specificity

This P2R3C antibody is generated from rabbits immunized with a KLH conjugated synthetic peptide between 50-79 amino acids from the N-terminal region of human P2R3C.

Dilution

IHC-P~~1:50~100

WB~~1:1000

E~~Use at an assay dependent concentration.

Format

Purified polyclonal antibody supplied in PBS with 0.09% (W/V) sodium azide. This antibody is purified through a protein A column, followed by peptide affinity purification.

Storage

Maintain refrigerated at 2-8°C for up to 2 weeks. For long term storage store at -20°C in small aliquots to prevent freeze-thaw cycles.

Precautions

P2R3C Antibody (N-term) is for research use only and not for use in diagnostic or therapeutic procedures.

P2R3C Antibody (N-term) - Protein Information

Name PPP2R3C

Synonyms C14orf10, G5PR

Function May regulate MCM3AP phosphorylation through phosphatase recruitment (By similarity). May act as a negative regulator of ABCB1 expression and function through the dephosphorylation of ABCB1 by TFPI2/PPP2R3C complex (PubMed:[24333728](#)). May play a role in the activation-induced cell death of B-cells (By similarity).

Cellular Location

Nucleus. Cytoplasm. Note=Excluded from the nucleoli Localization is cell cycle-dependent. Localizes to the cytoplasm during cytokinesis.

Tissue Location

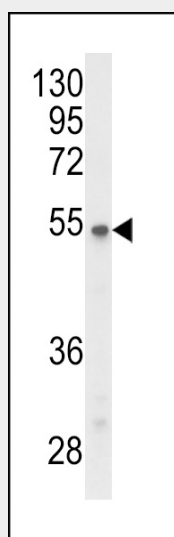
Ubiquitously expressed in brain and other tissues.

P2R3C Antibody (N-term) - Protocols

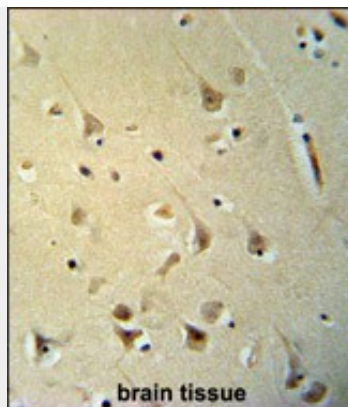
Provided below are standard protocols that you may find useful for product applications.

- [Western Blot](#)
- [Blocking Peptides](#)
- [Dot Blot](#)
- [Immunohistochemistry](#)
- [Immunofluorescence](#)
- [Immunoprecipitation](#)
- [Flow Cytometry](#)
- [Cell Culture](#)

P2R3C Antibody (N-term) - Images



Western blot analysis of P2R3C Antibody (N-term) (Cat. #AP9743a) in Y79 cell line lysates (35ug/lane). P2R3C (arrow) was detected using the purified Pab.



P2R3C Antibody (N-term) (Cat. #AP9743a) immunohistochemistry analysis in formalin fixed and paraffin embedded human brain tissue followed by peroxidase conjugation of the secondary antibody and DAB staining. This data demonstrates the use of the P2R3C Antibody (N-term) for immunohistochemistry. Clinical relevance has not been evaluated.

P2R3C Antibody (N-term) - Background

P2R3C may regulate MCM3AP phosphorylation through phosphatase recruitment. It may play a role in the activation-induced cell death of B-cells (By similarity).

P2R3C Antibody (N-term) - References

Xing, Y., et al. J. Exp. Med. 202(5):707-719(2005)
Kamnasaran, D., et al. Genomics 85(5):608-621(2005)
Kono, Y., et al. Genes Cells 7(8):821-834(2002)