

LYPD1 Antibody (C-term)
Affinity Purified Rabbit Polyclonal Antibody (Pab)
Catalog # AP9745b

Specification

LYPD1 Antibody (C-term) - Product Information

Application	WB, IHC-P,E
Primary Accession	Q8N2G4
Reactivity	Human, Mouse
Host	Rabbit
Clonality	Polyclonal
Isotype	Rabbit IgG
Calculated MW	15240
Antigen Region	93-122

LYPD1 Antibody (C-term) - Additional Information

Gene ID 116372

Other Names

Ly6/PLAUR domain-containing protein 1, Putative HeLa tumor suppressor, PHTS, LYPD1, LYPDC1

Target/Specificity

This LYPD1 antibody is generated from rabbits immunized with a KLH conjugated synthetic peptide between 93-122 amino acids from the C-terminal region of human LYPD1.

Dilution

WB~~1:1000

IHC-P~~1:50~100

E~~Use at an assay dependent concentration.

Format

Purified polyclonal antibody supplied in PBS with 0.09% (W/V) sodium azide. This antibody is purified through a protein A column, followed by peptide affinity purification.

Storage

Maintain refrigerated at 2-8°C for up to 2 weeks. For long term storage store at -20°C in small aliquots to prevent freeze-thaw cycles.

Precautions

LYPD1 Antibody (C-term) is for research use only and not for use in diagnostic or therapeutic procedures.

LYPD1 Antibody (C-term) - Protein Information

Name LYPD1

Synonyms Lynx2 {ECO:0000303|PubMed:33019770}, LYP

Function Believed to act as a modulator of nicotinic acetylcholine receptors (nAChRs) activity. In vitro increases receptor desensitization and decreases affinity for ACh of alpha-4:beta-2-containing nAChRs. May play a role in the intracellular trafficking of alpha-4:beta-2 and alpha-7-containing nAChRs and may inhibit their expression at the cell surface. May be involved in the control of anxiety.

Cellular Location

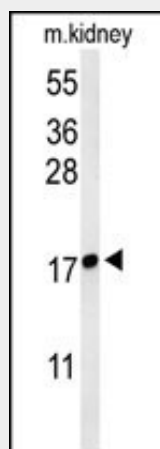
Cell membrane; Lipid-anchor, GPI- anchor

LYPD1 Antibody (C-term) - Protocols

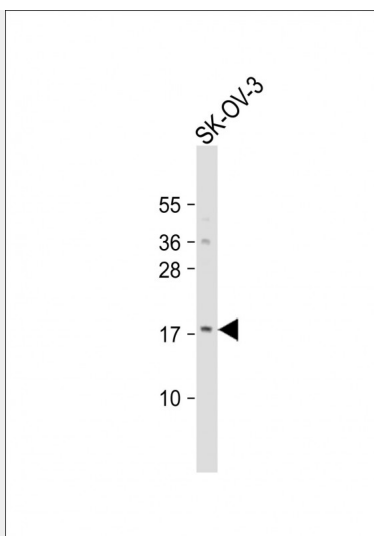
Provided below are standard protocols that you may find useful for product applications.

- [Western Blot](#)
- [Blocking Peptides](#)
- [Dot Blot](#)
- [Immunohistochemistry](#)
- [Immunofluorescence](#)
- [Immunoprecipitation](#)
- [Flow Cytometry](#)
- [Cell Culture](#)

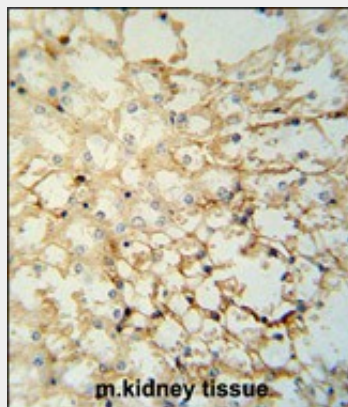
LYPD1 Antibody (C-term) - Images



Western blot analysis of LYPD1 Antibody (C-term) (Cat. #AP9745b) in mouse kidney tissue lysates (35ug/lane). LYPD1 (arrow) was detected using the purified Pab.



Anti-LYPD1 Antibody (C-term) at 1:1000 dilution + SK-OV-3 whole cell lysate Lysates/proteins at 20 µg per lane. Secondary Goat Anti-Rabbit IgG, (H+L), Peroxidase conjugated at 1/10000 dilution. Predicted band size : 15 kDa Blocking/Dilution buffer: 5% NFDM/TBST.



LYPD1 Antibody (C-term) (Cat. #AP9745b) immunohistochemistry analysis in formalin fixed and paraffin embedded mouse kidney tissue followed by peroxidase conjugation of the secondary antibody and DAB staining. This data demonstrates the use of the LYPD1 Antibody (C-term) for immunohistochemistry. Clinical relevance has not been evaluated.

LYPD1 Antibody (C-term) - References

Yu, D.H., et al. Exp. Cell Res. 312(6):865-876(2006)
Choy, K.W., et al. Physiol. Genomics 25(1):9-15(2006)