

**HSPA12A Antibody (Center)**  
**Affinity Purified Rabbit Polyclonal Antibody (Pab)**  
**Catalog # AP9765c****Specification**

---

**HSPA12A Antibody (Center) - Product Information**

Application	IHC-P, WB,E
Primary Accession	<a href="#">O43301</a>
Other Accession	<a href="#">Q8K0U4</a>
Reactivity	Human, Mouse
Host	Rabbit
Clonality	Polyclonal
Isotype	Rabbit IgG
Calculated MW	74978
Antigen Region	398-427

**HSPA12A Antibody (Center) - Additional Information****Gene ID** 259217**Other Names**

Heat shock 70 kDa protein 12A, HSPA12A, KIAA0417

**Target/Specificity**

This HSPA12A antibody is generated from rabbits immunized with a KLH conjugated synthetic peptide between 398-427 amino acids from the Central region of human HSPA12A.

**Dilution**

IHC-P~~1:50~100

WB~~1:1000

E~~Use at an assay dependent concentration.

**Format**

Purified polyclonal antibody supplied in PBS with 0.09% (W/V) sodium azide. This antibody is purified through a protein A column, followed by peptide affinity purification.

**Storage**

Maintain refrigerated at 2-8°C for up to 2 weeks. For long term storage store at -20°C in small aliquots to prevent freeze-thaw cycles.

**Precautions**

HSPA12A Antibody (Center) is for research use only and not for use in diagnostic or therapeutic procedures.

**HSPA12A Antibody (Center) - Protein Information****Name** HSPA12A

**Synonyms** KIAA0417

**Function** Adapter protein for SORL1, but not SORT1. Delays SORL1 internalization and affects SORL1 subcellular localization.

**Cellular Location**

Cytoplasm {ECO:0000250|UniProtKB:Q8K0U4}. Nucleus {ECO:0000250|UniProtKB:Q8K0U4}

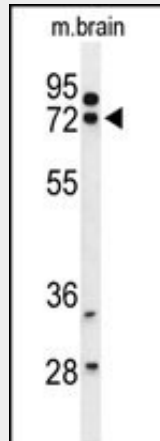
**Tissue Location**

Widely expressed with highest levels in brain, kidney and muscle.

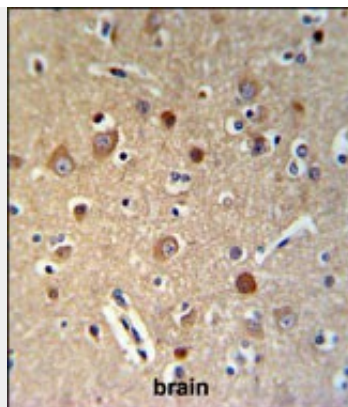
**HSPA12A Antibody (Center) - Protocols**

Provided below are standard protocols that you may find useful for product applications.

- [Western Blot](#)
- [Blocking Peptides](#)
- [Dot Blot](#)
- [Immunohistochemistry](#)
- [Immunofluorescence](#)
- [Immunoprecipitation](#)
- [Flow Cytometry](#)
- [Cell Culture](#)

**HSPA12A Antibody (Center) - Images**

Western blot analysis of HSPA12A Antibody (Center) (Cat. #AP9765c) in mouse brain tissue lysates (35ug/lane). HSPA12A (arrow) was detected using the purified Pab.



HSPA12A Antibody (Center) (Cat. #AP9765c) IHC analysis in formalin fixed and paraffin embedded brain tissue followed by peroxidase conjugation of the secondary antibody and DAB staining. This data demonstrates the use of the HSPA12A Antibody (Center) for immunohistochemistry. Clinical relevance has not been evaluated.

#### **HSPA12A Antibody (Center) - References**

- Starr, J.M., et al. Mech. Ageing Dev. 129(12):745-751(2008)  
Harris, S.E., et al. BMC Genet. 8, 43 (2007)  
Pongrac, J.L., et al. Biol. Psychiatry 56(12):943-950(2004)  
Han, Z., et al. Proc. Natl. Acad. Sci. U.S.A. 100(3):1256-1261(2003)