

NDUFA10 Antibody (Center)
Affinity Purified Rabbit Polyclonal Antibody (Pab)
Catalog # AP9768c**Specification**

NDUFA10 Antibody (Center) - Product Information

Application	FC, IHC-P, WB,E
Primary Accession	O95299
Reactivity	Human, Mouse
Host	Rabbit
Clonality	Polyclonal
Isotype	Rabbit IgG
Calculated MW	40751
Antigen Region	252-281

NDUFA10 Antibody (Center) - Additional Information**Gene ID** 4705**Other Names**

NADH dehydrogenase [ubiquinone] 1 alpha subcomplex subunit 10, mitochondrial, Complex I-42kD, CI-42kD, NADH-ubiquinone oxidoreductase 42 kDa subunit, NDUFA10

Target/Specificity

This NDUFA10 antibody is generated from rabbits immunized with a KLH conjugated synthetic peptide between 252-281 amino acids from the Central region of human NDUFA10.

Dilution

FC~~1:10~50

IHC-P~~1:50~100

WB~~1:1000

E~~Use at an assay dependent concentration.

Format

Purified polyclonal antibody supplied in PBS with 0.09% (W/V) sodium azide. This antibody is purified through a protein A column, followed by peptide affinity purification.

Storage

Maintain refrigerated at 2-8°C for up to 2 weeks. For long term storage store at -20°C in small aliquots to prevent freeze-thaw cycles.

Precautions

NDUFA10 Antibody (Center) is for research use only and not for use in diagnostic or therapeutic procedures.

NDUFA10 Antibody (Center) - Protein Information**Name** NDUFA10

Function Accessory subunit of the mitochondrial membrane respiratory chain NADH dehydrogenase (Complex I), that is believed not to be involved in catalysis. Complex I functions in the transfer of electrons from NADH to the respiratory chain. The immediate electron acceptor for the enzyme is believed to be ubiquinone.

Cellular Location

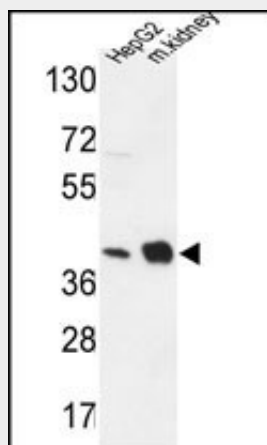
Mitochondrion matrix

NDUFA10 Antibody (Center) - Protocols

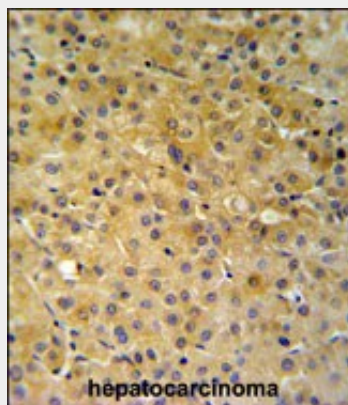
Provided below are standard protocols that you may find useful for product applications.

- [Western Blot](#)
- [Blocking Peptides](#)
- [Dot Blot](#)
- [Immunohistochemistry](#)
- [Immunofluorescence](#)
- [Immunoprecipitation](#)
- [Flow Cytometry](#)
- [Cell Culture](#)

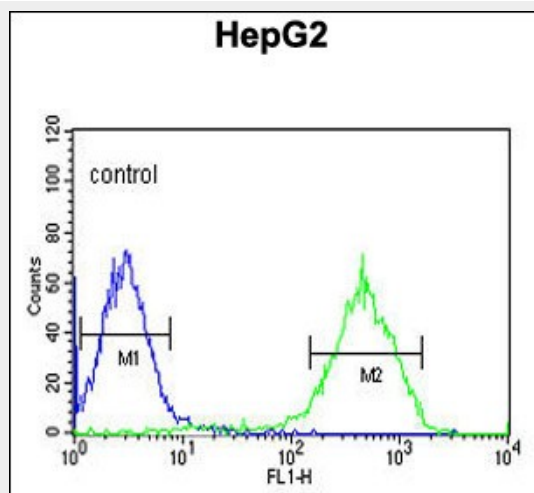
NDUFA10 Antibody (Center) - Images



NDUFA10 Antibody (Center) (Cat. #AP9768c) western blot analysis in HepG2 cell line and mouse kidney tissue lysates (35ug/lane). This demonstrates the NDUFA10 antibody detected the NDUFA10 protein (arrow).



NDUFA10 Antibody (Center) (Cat. #AP9768c) IHC analysis in formalin fixed and paraffin embedded hepatocarcinoma followed by peroxidase conjugation of the secondary antibody and DAB staining. This data demonstrates the use of the NDUFA10 Antibody (Center) for immunohistochemistry. Clinical relevance has not been evaluated.



NDUFA10 Antibody (Center) (Cat. #AP9768c) flow cytometric analysis of HepG2 cells (right histogram) compared to a negative control cell (left histogram). FITC-conjugated goat-anti-rabbit secondary antibodies were used for the analysis.

NDUFA10 Antibody (Center) - Background

The protein encoded by this gene belongs to the complex I 42kDA subunit family. Mammalian complex I is the first enzyme complex in the electron transport chain of mitochondria. It is composed of 45 different subunits. This protein is a component of the hydrophobic protein fraction and has NADH dehydrogenase activity and oxidoreductase activity. It transfers electrons from NADH to the respiratory chain.

NDUFA10 Antibody (Center) - References

- Saito, A., et al. J. Hum. Genet. 54(6):317-323(2009)
- Wang, L., et al. Cancer Epidemiol. Biomarkers Prev. 17(12):3558-3566(2008)
- Starr, J.M., et al. Mech. Ageing Dev. 129(12):745-751(2008)
- Ma, J., et al. Atherosclerosis 191(1):63-72(2007)
- Harris, S.E., et al. BMC Genet. 8, 43 (2007)
- Gevaert, K., et al. Nat. Biotechnol. 21(5):566-569(2003)