

**PKHH2 Antibody (C-term)**  
**Affinity Purified Rabbit Polyclonal Antibody (Pab)**  
**Catalog # AP9773b**

**Specification**

---

**PKHH2 Antibody (C-term) - Product Information**

Application	FC, IHC-P, WB,E
Primary Accession	<a href="#">Q8IVE3</a>
Reactivity	Human
Host	Rabbit
Clonality	Polyclonal
Isotype	Rabbit IgG
Calculated MW	168229
Antigen Region	1049-1079

**PKHH2 Antibody (C-term) - Additional Information**

**Gene ID** 130271

**Other Names**

Pleckstrin homology domain-containing family H member 2, PLEKHH2, KIAA2028

**Target/Specificity**

This PKHH2 antibody is generated from rabbits immunized with a KLH conjugated synthetic peptide between 1049-1079 amino acids from the C-terminal region of human PKHH2.

**Dilution**

FC~~1:10~50

IHC-P~~1:50~100

WB~~1:1000

E~~Use at an assay dependent concentration.

**Format**

Purified polyclonal antibody supplied in PBS with 0.09% (W/V) sodium azide. This antibody is purified through a protein A column, followed by peptide affinity purification.

**Storage**

Maintain refrigerated at 2-8°C for up to 2 weeks. For long term storage store at -20°C in small aliquots to prevent freeze-thaw cycles.

**Precautions**

PKHH2 Antibody (C-term) is for research use only and not for use in diagnostic or therapeutic procedures.

**PKHH2 Antibody (C-term) - Protein Information**

**Name** PLEKHH2

**Synonyms** KIAA2028

**Function** In the kidney glomerulus may play a role in linking podocyte foot processes to the glomerular basement membrane. May be involved in stabilization of F-actin by attenuating its depolymerization. Can recruit TGFB1I1 from focal adhesions to podocyte lamellipodia.

**Cellular Location**

Cytoplasm. Cytoplasm, cytoskeleton. Cell membrane; Peripheral membrane protein; Cytoplasmic side. Cell projection, lamellipodium. Note=Localizes to foot process of podocytes. Localization to peripheral regions of lamellipodia seems to be dependent on PI3K

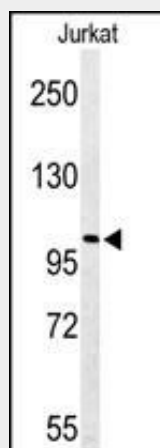
**Tissue Location**

Kidney. Reduced expression in patients with focal segmental glomerulosclerosis.

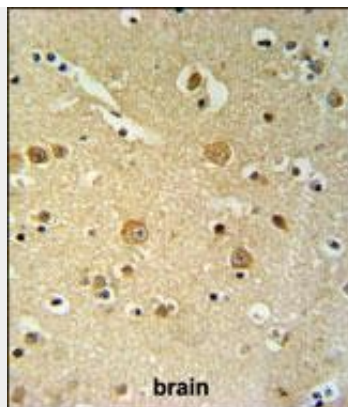
**PKHH2 Antibody (C-term) - Protocols**

Provided below are standard protocols that you may find useful for product applications.

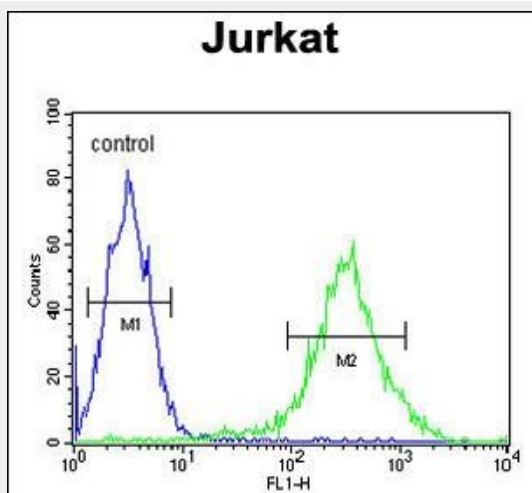
- [Western Blot](#)
- [Blocking Peptides](#)
- [Dot Blot](#)
- [Immunohistochemistry](#)
- [Immunofluorescence](#)
- [Immunoprecipitation](#)
- [Flow Cytometry](#)
- [Cell Culture](#)

**PKHH2 Antibody (C-term) - Images**

Western blot analysis of PKHH2 Antibody (C-term) (Cat. #AP9773b) in Jurkat cell line lysates (35ug/lane). PKHH2 (arrow) was detected using the purified Pab.



PKHH2 Antibody (C-term) (Cat. #AP9773b) IHC analysis in formalin fixed and paraffin embedded brain tissue followed by peroxidase conjugation of the secondary antibody and DAB staining. This data demonstrates the use of the APKHH2 Antibody (C-term) for immunohistochemistry. Clinical relevance has not been evaluated.



PKHH2 Antibody (C-term) (Cat. #AP9773b) flow cytometric analysis of Jurkat cells (right histogram) compared to a negative control cell (left histogram). FITC-conjugated goat-anti-rabbit secondary antibodies were used for the analysis.

#### PKHH2 Antibody (C-term) - References

Greene, C.N., et al. Hum. Genet. 124(3):255-262(2008)  
Simpson, J.C., et al. EMBO Rep. 1(3):287-292(2000)