

CA6 Antibody (C-term)
Affinity Purified Rabbit Polyclonal Antibody (Pab)
Catalog # AP9780b**Specification**

CA6 Antibody (C-term) - Product Information

Application	FC, IHC-P, WB,E
Primary Accession	P23280
Reactivity	Human
Host	Rabbit
Clonality	Polyclonal
Isotype	Rabbit IgG
Calculated MW	35367
Antigen Region	279-308

CA6 Antibody (C-term) - Additional Information**Gene ID** 765**Other Names**

Carbonic anhydrase 6, Carbonate dehydratase VI, Carbonic anhydrase VI, CA-VI, Salivary carbonic anhydrase, Secreted carbonic anhydrase, CA6

Target/Specificity

This CA6 antibody is generated from rabbits immunized with a KLH conjugated synthetic peptide between 279-308 amino acids from the C-terminal region of human CA6.

Dilution

FC~~1:10~50

IHC-P~~1:50~100

WB~~1:1000

E~~Use at an assay dependent concentration.

Format

Purified polyclonal antibody supplied in PBS with 0.09% (W/V) sodium azide. This antibody is purified through a protein A column, followed by peptide affinity purification.

Storage

Maintain refrigerated at 2-8°C for up to 2 weeks. For long term storage store at -20°C in small aliquots to prevent freeze-thaw cycles.

Precautions

CA6 Antibody (C-term) is for research use only and not for use in diagnostic or therapeutic procedures.

CA6 Antibody (C-term) - Protein Information**Name** CA6

Function Reversible hydration of carbon dioxide. Its role in saliva is unknown.

Cellular Location

Secreted.

Tissue Location

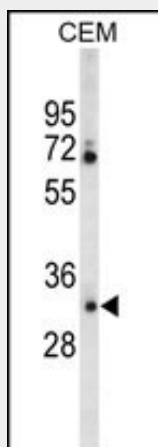
Major constituent of saliva.

CA6 Antibody (C-term) - Protocols

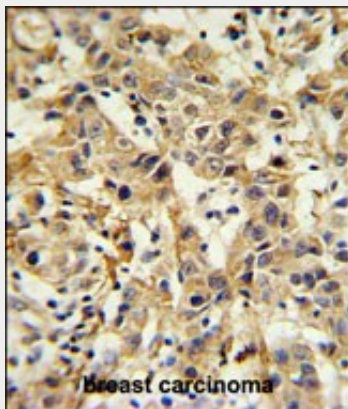
Provided below are standard protocols that you may find useful for product applications.

- [Western Blot](#)
- [Blocking Peptides](#)
- [Dot Blot](#)
- [Immunohistochemistry](#)
- [Immunofluorescence](#)
- [Immunoprecipitation](#)
- [Flow Cytometry](#)
- [Cell Culture](#)

CA6 Antibody (C-term) - Images

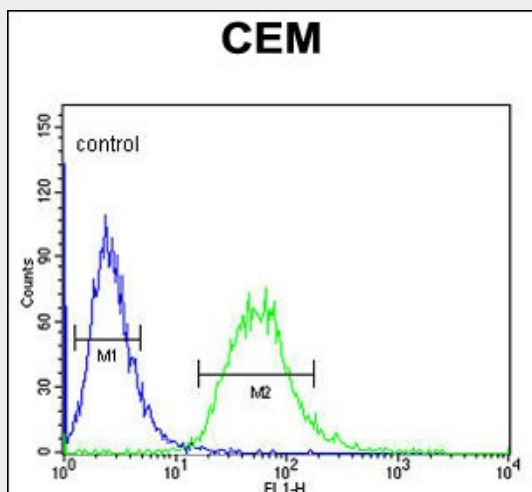


Western blot analysis of CA6 Antibody (C-term) (Cat. #AP9780b) in CEM cell line lysates (35ug/lane). CA6 (arrow) was detected using the purified Pab.



CA6 Antibody (C-term) (Cat. #AP9780b) IHC analysis in formalin fixed and paraffin embedded

breast carcinoma followed by peroxidase conjugation of the secondary antibody and DAB staining. This data demonstrates the use of the CA6 Antibody (C-term) for immunohistochemistry. Clinical relevance has not been evaluated.



CA6 Antibody (C-term) (Cat. #AP9780b) flow cytometric analysis of CEM cells (right histogram) compared to a negative control cell (left histogram). FITC-conjugated goat-anti-rabbit secondary antibodies were used for the analysis.

CA6 Antibody (C-term) - Background

The protein encoded by this gene is one of several isozymes of carbonic anhydrase. This protein is found only in salivary glands and saliva and protein may play a role in the reversible hydration of carbon dioxide though its function in saliva is unknown.

CA6 Antibody (C-term) - References

- Nishimori, I., et al. Bioorg. Med. Chem. 15(15):5351-5357(2007)
- Karhumaa, P., et al. Proc. Natl. Acad. Sci. U.S.A. 98(20):11604-11608(2001)
- Breton, S. JOP 2 (4 SUPPL), 159-164 (2001) :
- Leinonen, J., et al. J. Histochem. Cytochem. 49(5):657-662(2001)