

GPR180 Antibody (Center)
Affinity Purified Rabbit Polyclonal Antibody (Pab)
Catalog # AP9787c

Specification

GPR180 Antibody (Center) - Product Information

Application	IHC-P, WB,E
Primary Accession	Q86V85
Reactivity	Human
Host	Rabbit
Clonality	Polyclonal
Isotype	Rabbit IgG
Calculated MW	49395
Antigen Region	119-147

GPR180 Antibody (Center) - Additional Information

Gene ID 160897

Other Names

Integral membrane protein GPR180, Intimal thickness-related receptor, GPR180, ITR

Target/Specificity

This GPR180 antibody is generated from rabbits immunized with a KLH conjugated synthetic peptide between 119-147 amino acids from the Central region of human GPR180.

Dilution

IHC-P~~1:50~100

WB~~1:1000

E~~Use at an assay dependent concentration.

Format

Purified polyclonal antibody supplied in PBS with 0.09% (W/V) sodium azide. This antibody is purified through a protein A column, followed by peptide affinity purification.

Storage

Maintain refrigerated at 2-8°C for up to 2 weeks. For long term storage store at -20°C in small aliquots to prevent freeze-thaw cycles.

Precautions

GPR180 Antibody (Center) is for research use only and not for use in diagnostic or therapeutic procedures.

GPR180 Antibody (Center) - Protein Information

Name GPR180

Synonyms ITR

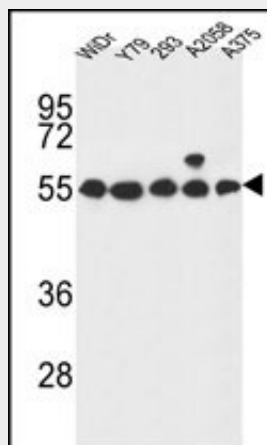
Cellular Location

Membrane; Multi-pass membrane protein

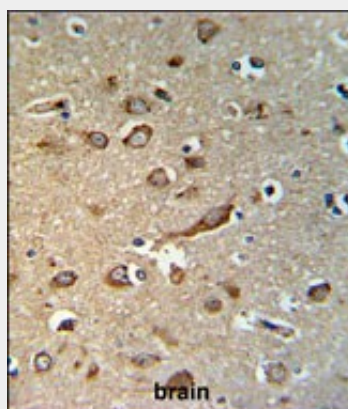
GPR180 Antibody (Center) - Protocols

Provided below are standard protocols that you may find useful for product applications.

- [Western Blot](#)
- [Blocking Peptides](#)
- [Dot Blot](#)
- [Immunohistochemistry](#)
- [Immunofluorescence](#)
- [Immunoprecipitation](#)
- [Flow Cytometry](#)
- [Cell Culture](#)

GPR180 Antibody (Center) - Images

GPR180 Antibody (Center) (Cat. #AP9787c) western blot analysis in WiDr,Y79,293,A2058,A375 cell line lysates (35ug/lane).This demonstrates the GPR180 antibody detected the GPR180 protein (arrow).



GPR180 Antibody (Center) (Cat. #AP9787c) IHC analysis in formalin fixed and paraffin embedded brain tissue followed by peroxidase conjugation of the secondary antibody and DAB staining. This data demonstrates the use of the GPR180 Antibody (Center) for immunohistochemistry. Clinical relevance has not been evaluated.

GPR180 Antibody (Center) - Background

This gene encodes a protein that is a member of the G protein-coupled receptor superfamily. This protein is produced predominantly in vascular smooth muscle cells and may play an important role in the regulation of vascular remodeling.

GPR180 Antibody (Center) - References

Dunham, A., et al. Nature 428(6982):522-528(2004)
Tsukada, S., et al. Circulation 107(2):313-319(2003)
Iida, A., et al. J. Hum. Genet. 48(4):170-172(2003)