

PATL1 Antibody (C-term)
Affinity Purified Rabbit Polyclonal Antibody (Pab)
Catalog # AP9796b

Specification

PATL1 Antibody (C-term) - Product Information

| | |
|-------------------|---|
| Application | FC, IHC-P, WB,E |
| Primary Accession | Q86TB9 |
| Other Accession | B5DF93 , Q3TC46 |
| Reactivity | Human |
| Predicted | Mouse, Rat |
| Host | Rabbit |
| Clonality | Polyclonal |
| Isotype | Rabbit IgG |
| Calculated MW | 86850 |
| Antigen Region | 489-518 |

PATL1 Antibody (C-term) - Additional Information

Gene ID 219988

Other Names

Protein PAT1 homolog 1, PAT1-like protein 1, Protein PAT1 homolog b, Pat1b, hPat1b, PATL1

Target/Specificity

This PATL1 antibody is generated from rabbits immunized with a KLH conjugated synthetic peptide between 489-518 amino acids from the C-terminal region of human PATL1.

Dilution

FC~~1:10~50

IHC-P~~1:50~100

WB~~1:1000

E~~Use at an assay dependent concentration.

Format

Purified polyclonal antibody supplied in PBS with 0.09% (W/V) sodium azide. This antibody is purified through a protein A column, followed by peptide affinity purification.

Storage

Maintain refrigerated at 2-8°C for up to 2 weeks. For long term storage store at -20°C in small aliquots to prevent freeze-thaw cycles.

Precautions

PATL1 Antibody (C-term) is for research use only and not for use in diagnostic or therapeutic procedures.

PATL1 Antibody (C-term) - Protein Information

Name PATL1

Function RNA-binding protein involved in deadenylation-dependent decapping of mRNAs, leading to the degradation of mRNAs (PubMed:[17936923](#), PubMed:[20543818](#), PubMed:[20584987](#), PubMed:[20852261](#)). Acts as a scaffold protein that connects deadenylation and decapping machinery (PubMed:[17936923](#), PubMed:[20543818](#), PubMed:[20584987](#), PubMed:[20852261](#)). Required for cytoplasmic mRNA processing body (P- body) assembly (PubMed:[17936923](#), PubMed:[20543818](#), PubMed:[20584987](#), PubMed:[20852261](#)).

Cellular Location

Cytoplasm, P-body. Nucleus. Nucleus, PML body. Nucleus speckle. Note=Predominantly cytoplasmic (PubMed:22090346). Shuttles between the nucleus and the cytoplasm in a CRM1-dependent manner (PubMed:22090346). Enriched in splicing speckles Localization to nuclear foci and speckles requires active transcription. Excluded from the nucleolus (PubMed:22090346)

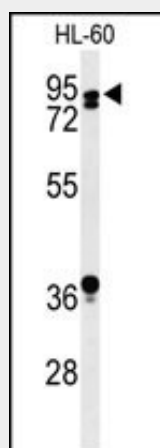
Tissue Location

Ubiquitous..

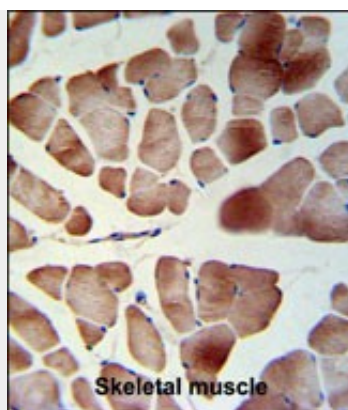
PATL1 Antibody (C-term) - Protocols

Provided below are standard protocols that you may find useful for product applications.

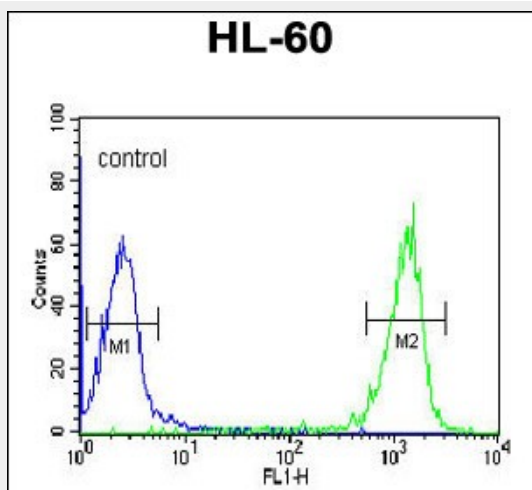
- [Western Blot](#)
- [Blocking Peptides](#)
- [Dot Blot](#)
- [Immunohistochemistry](#)
- [Immunofluorescence](#)
- [Immunoprecipitation](#)
- [Flow Cytometry](#)
- [Cell Culture](#)

PATL1 Antibody (C-term) - Images

Western blot analysis of PATL1 Antibody (C-term) (Cat. #AP9796b) in HL-60 cell line lysates (35ug/lane). PATL1 (arrow) was detected using the purified Pab.



PATL1 Antibody (C-term) (Cat. #AP9796b) IHC analysis in formalin fixed and paraffin embedded skeletal muscle followed by peroxidase conjugation of the secondary antibody and DAB staining. This data demonstrates the use of the PATL1 Antibody (C-term) for immunohistochemistry. Clinical relevance has not been evaluated.



PATL1 Antibody (C-term) (Cat. #AP9796b) flow cytometric analysis of HL-60 cells (right histogram) compared to a negative control cell (left histogram). FITC-conjugated goat-anti-rabbit secondary antibodies were used for the analysis.

PATL1 Antibody (C-term) - References

Scheller, N., et al. Biochim. Biophys. Acta 1773(12):1786-1792(2007)
Beausoleil, S.A., et al. Proc. Natl. Acad. Sci. U.S.A. 101(33):12130-12135(2004)