

VTCN1 Antibody (Center)
Affinity Purified Rabbit Polyclonal Antibody (Pab)
Catalog # AP9802c**Specification**

VTCN1 Antibody (Center) - Product Information

Application	WB,E
Primary Accession	Q7Z7D3
Reactivity	Human
Host	Rabbit
Clonality	Polyclonal
Isotype	Rabbit IgG
Antigen Region	72-100

VTCN1 Antibody (Center) - Additional Information**Gene ID** 79679**Other Names**

V-set domain-containing T-cell activation inhibitor 1, B7 homolog 4, B7-H4, B7h5, Immune costimulatory protein B7-H4, Protein B7S1, T-cell costimulatory molecule B7x, VTCN1 {ECO:0000312|EMBL:EAW566721}

Target/Specificity

This VTCN1 antibody is generated from rabbits immunized with a KLH conjugated synthetic peptide between 72-100 amino acids from the Central region of human VTCN1.

Dilution

WB~~1:1000

E~~Use at an assay dependent concentration.

Format

Purified polyclonal antibody supplied in PBS with 0.09% (W/V) sodium azide. This antibody is purified through a protein A column, followed by peptide affinity purification.

Storage

Maintain refrigerated at 2-8°C for up to 2 weeks. For long term storage store at -20°C in small aliquots to prevent freeze-thaw cycles.

Precautions

VTCN1 Antibody (Center) is for research use only and not for use in diagnostic or therapeutic procedures.

VTCN1 Antibody (Center) - Protein Information**Name** VTCN1 {ECO:0000312|EMBL:EAW56672.1}**Function** Negatively regulates T-cell-mediated immune response by inhibiting T-cell activation,

proliferation, cytokine production and development of cytotoxicity. When expressed on the cell surface of tumor macrophages, plays an important role, together with regulatory T- cells (Treg), in the suppression of tumor-associated antigen-specific T-cell immunity. Involved in promoting epithelial cell transformation.

Cellular Location

Cell membrane; Single-pass type I membrane protein. Note=Expressed at the cell surface. A soluble form has also been detected. {ECO:0000255, ECO:0000269|PubMed:12818165, ECO:0000269|PubMed:15878339, ECO:0000269|PubMed:16782226}

Tissue Location

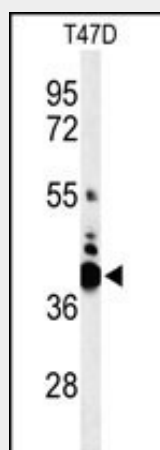
Overexpressed in breast, ovarian, endometrial, renal cell (RCC) and non-small-cell lung cancers (NSCLC). Expressed on activated T- and B-cells, monocytes and dendritic cells, but not expressed in most normal tissues (at protein level). Widely expressed, including in kidney, liver, lung, ovary, placenta, spleen and testis

VTCN1 Antibody (Center) - Protocols

Provided below are standard protocols that you may find useful for product applications.

- [Western Blot](#)
- [Blocking Peptides](#)
- [Dot Blot](#)
- [Immunohistochemistry](#)
- [Immunofluorescence](#)
- [Immunoprecipitation](#)
- [Flow Cytometry](#)
- [Cell Culture](#)

VTCN1 Antibody (Center) - Images



Western blot analysis of VTCN1 Antibody (Center) (Cat. #AP9802c) in T47D cell line lysates (35ug/lane). VTCN1 (arrow) was detected using the purified Pab.

VTCN1 Antibody (Center) - Background

VTCN1 belongs to the B7 family (see CD80; MIM 112203) of costimulatory proteins. These proteins are expressed on the surface of antigen-presenting cells and interact with ligands (e.g., CD28; MIM 186760) on T lymphocytes.

VTCN1 Antibody (Center) - References

Xue, Q., et al. Stem Cells Dev. 19(1):27-38(2010)
Cheng, L., et al. Int. J. Gynecol. Cancer 19(9):1481-1486(2009)
Hinks, A., et al. Arthritis Rheum. 60(1):258-263(2009)
Zhang, J., et al. BMC Cancer 9, 394 (2009) :
Thompson, R.H., et al. Cancer Res. 68(15):6054-6058(2008)
Clark, H.F., et al. Genome Res. 13(10):2265-2270(2003)
Zang, X., et al. Proc. Natl. Acad. Sci. U.S.A. 100(18):10388-10392(2003)