

RHG19 Antibody (Center)
Affinity Purified Rabbit Polyclonal Antibody (Pab)
Catalog # AP9811c**Specification**

RHG19 Antibody (Center) - Product Information

Application	WB, FC,E
Primary Accession	Q14CB8
Reactivity	Human
Host	Rabbit
Clonality	Polyclonal
Isotype	Rabbit IgG
Antigen Region	195-224

RHG19 Antibody (Center) - Additional Information**Gene ID** 84986**Other Names**

Rho GTPase-activating protein 19, Rho-type GTPase-activating protein 19, ARHGAP19

Target/Specificity

This RHG19 antibody is generated from rabbits immunized with a KLH conjugated synthetic peptide between 195-224 amino acids from the Central region of human RHG19.

DilutionWB~~1:1000
FC~~1:10~50**Format**

Purified polyclonal antibody supplied in PBS with 0.09% (W/V) sodium azide. This antibody is purified through a protein A column, followed by peptide affinity purification.

Storage

Maintain refrigerated at 2-8°C for up to 2 weeks. For long term storage store at -20°C in small aliquots to prevent freeze-thaw cycles.

Precautions

RHG19 Antibody (Center) is for research use only and not for use in diagnostic or therapeutic procedures.

RHG19 Antibody (Center) - Protein Information**Name** ARHGAP19**Function** GTPase activator for the Rho-type GTPases by converting them to an inactive GDP-bound state.

Cellular Location

Nucleus.

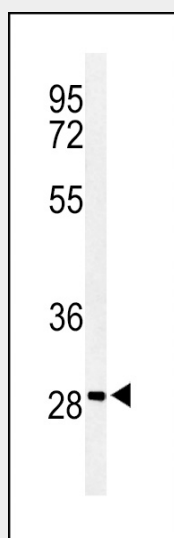
Tissue Location

Strong expression in fetal heart, brain, placenta, lung, liver, skeletal muscle, kidney and pancreas.
Weak expression in adult pancreas, spleen, thymus, and ovary

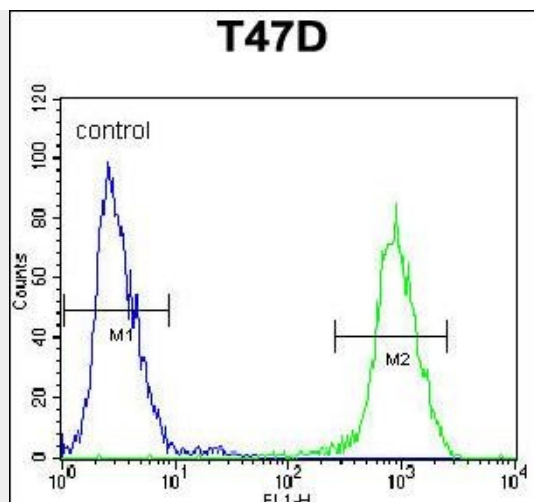
RHG19 Antibody (Center) - Protocols

Provided below are standard protocols that you may find useful for product applications.

- [Western Blot](#)
- [Blocking Peptides](#)
- [Dot Blot](#)
- [Immunohistochemistry](#)
- [Immunofluorescence](#)
- [Immunoprecipitation](#)
- [Flow Cytometry](#)
- [Cell Culture](#)

RHG19 Antibody (Center) - Images

Western blot analysis of RHG19 Antibody (Center) (Cat. #AP9811c) in T47D cell line lysates (35ug/lane). RHG19 (arrow) was detected using the purified Pab.



RHG19 Antibody (Center) (Cat. #AP9811c) flow cytometric analysis of T47D cells (right histogram) compared to a negative control cell (left histogram). FITC-conjugated goat-anti-rabbit secondary antibodies were used for the analysis.

RHG19 Antibody (Center) - Background

Members of the ARHGAP family, such as ARHGAP19, encode negative regulators of Rho GTPases (see RHOA; MIM 165390), which are involved in cell migration, proliferation, and differentiation, actin remodeling, and G1 cell cycle progression.

RHG19 Antibody (Center) - References

- Lv, L., et al. DNA Seq. 18(3):184-189(2007)
- Grupe, A., et al. Am. J. Hum. Genet. 78(1):78-88(2006)
- Deloukas, P., et al. Nature 429(6990):375-381(2004)
- Jikuya, H., et al. DNA Res. 10(1):49-57(2003)