

CLDN23 Antibody (C-term)
Affinity Purified Rabbit Polyclonal Antibody (Pab)
Catalog # AP9832B**Specification**

CLDN23 Antibody (C-term) - Product Information

Application	IHC-P, WB,E
Primary Accession	Q96B33
Reactivity	Human, Mouse
Host	Rabbit
Clonality	Polyclonal
Isotype	Rabbit IgG
Calculated MW	31915
Antigen Region	228-257

CLDN23 Antibody (C-term) - Additional Information**Gene ID** 137075**Other Names**

Claudin-23, CLDN23

Target/Specificity

This CLDN23 antibody is generated from rabbits immunized with a KLH conjugated synthetic peptide between 228-257 amino acids from the C-terminal region of human CLDN23.

Dilution

IHC-P~~1:50~100

WB~~1:1000

E~~Use at an assay dependent concentration.

Format

Purified polyclonal antibody supplied in PBS with 0.09% (W/V) sodium azide. This antibody is purified through a protein A column, followed by peptide affinity purification.

Storage

Maintain refrigerated at 2-8°C for up to 2 weeks. For long term storage store at -20°C in small aliquots to prevent freeze-thaw cycles.

Precautions

CLDN23 Antibody (C-term) is for research use only and not for use in diagnostic or therapeutic procedures.

CLDN23 Antibody (C-term) - Protein Information**Name** CLDN23**Function** Plays a major role in tight junction-specific obliteration of the intercellular space,

through calcium-independent cell-adhesion activity.

Cellular Location

Cell junction, tight junction. Cell membrane; Multi-pass membrane protein

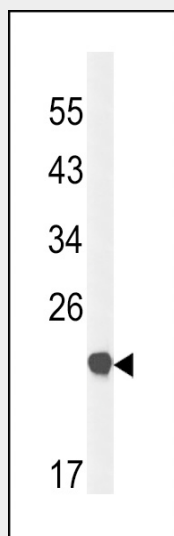
Tissue Location

Expressed in germinal center B-cells, placenta, stomach as well as in colon tumor.

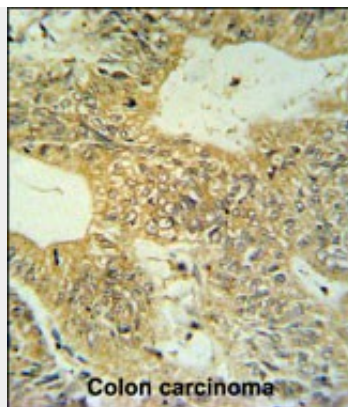
CLDN23 Antibody (C-term) - Protocols

Provided below are standard protocols that you may find useful for product applications.

- [Western Blot](#)
- [Blocking Peptides](#)
- [Dot Blot](#)
- [Immunohistochemistry](#)
- [Immunofluorescence](#)
- [Immunoprecipitation](#)
- [Flow Cytometry](#)
- [Cell Culture](#)

CLDN23 Antibody (C-term) - Images

Western blot analysis of CLDN23 Antibody (C-term) (Cat. #AP9832b) in mouse bladder tissue lysates (35ug/lane). CLDN23 (arrow) was detected using the purified Pab.



CLDN23 Antibody (C-term) (Cat. #AP9832b) IHC analysis in formalin fixed and paraffin embedded colon carcinoma followed by peroxidase conjugation of the secondary antibody and DAB staining. This data demonstrates the use of the CLDN23 Antibody (C-term) for immunohistochemistry. Clinical relevance has not been evaluated.

CLDN23 Antibody (C-term) - Background

CLDN23 is a four-transmembrane protein with WWCC motif, defined by W-X(17-22)-W-X(2)-C-X(8-10)-C. It is a candidate tumor suppressor gene implicated in intestinal-type gastric cancer.

CLDN23 Antibody (C-term) - References

Rikova, K., et al. Cell 131(6):1190-1203(2007)
Ballana, E., et al. BMC Med. Genet. 8, 81 (2007) :
Katoh, M., et al. Int. J. Mol. Med. 11(6):683-689(2003)
Venter, J.C., et al. Science 291(5507):1304-1351(2001)