

PCDH17 Antibody (C-term)
Affinity Purified Rabbit Polyclonal Antibody (Pab)
Catalog # AP9835b

Specification

PCDH17 Antibody (C-term) - Product Information

Application	FC, WB,E
Primary Accession	O14917
Reactivity	Human
Host	Rabbit
Clonality	Polyclonal
Isotype	Rabbit IgG
Calculated MW	126229
Antigen Region	1107-1136

PCDH17 Antibody (C-term) - Additional Information

Gene ID 27253

Other Names

Protocadherin-17, Protocadherin-68, PCDH17, PCDH68, PCH68

Target/Specificity

This PCDH17 antibody is generated from rabbits immunized with a KLH conjugated synthetic peptide between 1107-1136 amino acids from the C-terminal region of human PCDH17.

Dilution

FC~~1:10~50

WB~~1:1000

E~~Use at an assay dependent concentration.

Format

Purified polyclonal antibody supplied in PBS with 0.09% (W/V) sodium azide. This antibody is purified through a protein A column, followed by peptide affinity purification.

Storage

Maintain refrigerated at 2-8°C for up to 2 weeks. For long term storage store at -20°C in small aliquots to prevent freeze-thaw cycles.

Precautions

PCDH17 Antibody (C-term) is for research use only and not for use in diagnostic or therapeutic procedures.

PCDH17 Antibody (C-term) - Protein Information

Name PCDH17

Synonyms PCDH68, PCH68

Function Potential calcium-dependent cell-adhesion protein.

Cellular Location

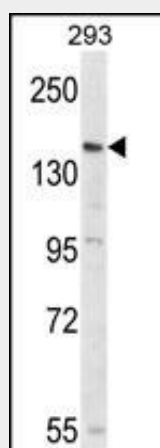
Cell membrane; Single-pass type I membrane protein

PCDH17 Antibody (C-term) - Protocols

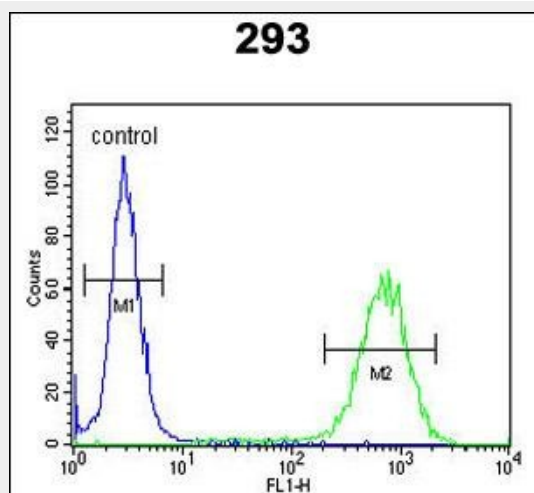
Provided below are standard protocols that you may find useful for product applications.

- [Western Blot](#)
- [Blocking Peptides](#)
- [Dot Blot](#)
- [Immunohistochemistry](#)
- [Immunofluorescence](#)
- [Immunoprecipitation](#)
- [Flow Cytometry](#)
- [Cell Culture](#)

PCDH17 Antibody (C-term) - Images



Western blot analysis of PCDH17 Antibody (C-term) (Cat. #AP9835b) in 293 cell line lysates (35ug/lane). PCDH17 (arrow) was detected using the purified Pab.



PCDH17 Antibody (C-term) (Cat. #AP9835b) flow cytometric analysis of 293 cells (right

histogram) compared to a negative control cell (left histogram).FITC-conjugated goat-anti-rabbit secondary antibodies were used for the analysis.

PCDH17 Antibody (C-term) - Background

This gene belongs to the protocadherin gene family, a subfamily of the cadherin superfamily. The encoded protein contains six extracellular cadherin domains, a transmembrane domain, and a cytoplasmic tail differing from those of the classical cadherins. The encoded protein may play a role in the establishment and function of specific cell-cell connections in the brain.

PCDH17 Antibody (C-term) - References

- Biswas, S., et al. Dev. Genes Evol. 219(5):265-271(2009)
Charles, C.A., et al. J. Am. Acad. Dermatol. 59(5):758-771(2008)
Sherwin, J.R., et al. Hum. Reprod. 23(5):1063-1068(2008)
Abrahams, B.S., et al. Proc. Natl. Acad. Sci. U.S.A. 104(45):17849-17854(2007)
Gottlieb, D.J., et al. BMC Med. Genet. 8 SUPPL 1, S9 (2007)