

OST alpha Antibody (C-term)
Affinity Purified Rabbit Polyclonal Antibody (Pab)
Catalog # AP9838b

Specification

OST alpha Antibody (C-term) - Product Information

Application	FC, WB,E
Primary Accession	Q86UW1
Reactivity	Human
Host	Rabbit
Clonality	Polyclonal
Isotype	Rabbit IgG
Antigen Region	298-327

OST alpha Antibody (C-term) - Additional Information

Gene ID 200931

Other Names

Organic solute transporter subunit alpha, OST-alpha, Solute carrier family 51 subunit alpha, SLC51A, OSTA

Target/Specificity

This OST alpha antibody is generated from rabbits immunized with a KLH conjugated synthetic peptide between 298-327 amino acids from the C-terminal region of human OST alpha.

Dilution

FC~~1:10~50

WB~~1:1000

E~~Use at an assay dependent concentration.

Format

Purified polyclonal antibody supplied in PBS with 0.09% (W/V) sodium azide. This antibody is purified through a protein A column, followed by peptide affinity purification.

Storage

Maintain refrigerated at 2-8°C for up to 2 weeks. For long term storage store at -20°C in small aliquots to prevent freeze-thaw cycles.

Precautions

OST alpha Antibody (C-term) is for research use only and not for use in diagnostic or therapeutic procedures.

OST alpha Antibody (C-term) - Protein Information

Name SLC51A

Synonyms OSTA

Function Essential component of the Ost-alpha/Ost-beta complex, a heterodimer that acts as the intestinal basolateral transporter responsible for bile acid export from enterocytes into portal blood (PubMed:[16317684](#)). Efficiently transports the major species of bile acids (taurocholate) (PubMed:[16317684](#)). Taurine conjugates are transported more efficiently across the basolateral membrane than glycine-conjugated bile acids (By similarity). Can also transport steroids such as estrone 3-sulfate and dehydroepiandrosterone 3- sulfate, therefore playing a role in the enterohepatic circulation of steroids (PubMed:[16317684](#)). Able to transport eicosanoids such as prostaglandin E2 (By similarity).

Cellular Location

Cell membrane; Multi-pass membrane protein. Endoplasmic reticulum membrane; Multi-pass membrane protein Note=Transported from the endoplasmic reticulum to the plasma membrane upon interacting with SLC51B (By similarity). Mainly restricted to the lateral and basal membranes of ileal enterocytes.

Tissue Location

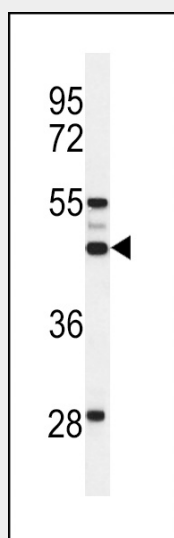
Widely expressed with a high expression in ileum. Expressed in testis, colon, liver, small intestine, kidney, ovary and adrenal gland; and at low levels in heart, lung, brain, pituitary, thyroid gland, uterus, prostate, mammary gland and fat

OST alpha Antibody (C-term) - Protocols

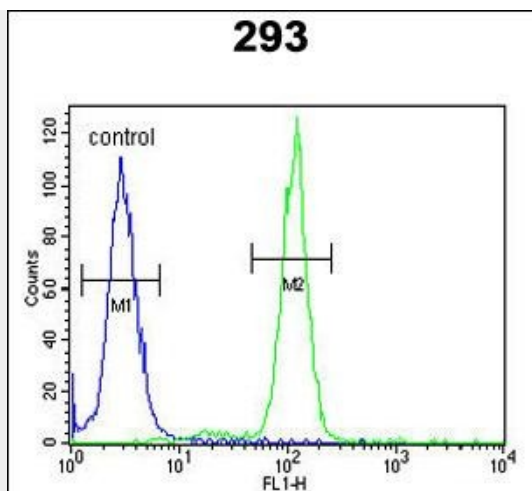
Provided below are standard protocols that you may find useful for product applications.

- [Western Blot](#)
- [Blocking Peptides](#)
- [Dot Blot](#)
- [Immunohistochemistry](#)
- [Immunofluorescence](#)
- [Immunoprecipitation](#)
- [Flow Cytometry](#)
- [Cell Culture](#)

OST alpha Antibody (C-term) - Images



Western blot analysis of OSTalpha Antibody (C-term) (Cat. #AP9838b) in 293 cell line lysates (35ug/lane). OST alpha (arrow) was detected using the purified Pab.



OST alpha Antibody (C-term) (Cat. #AP9838b) flow cytometric analysis of 293 cells (right histogram) compared to a negative control cell (left histogram). FITC-conjugated goat-anti-rabbit secondary antibodies were used for the analysis.

OST alpha Antibody (C-term) - References

- Renner, O., et al. J. Lipid Res. 49(9):2045-2054(2008)
- Soroka, C.J., et al. BMC Cell Biol. 9, 57 (2008)
- Sun, A.Q., et al. Am. J. Physiol. Gastrointest. Liver Physiol. 292 (6), G1586-G1593 (2007)
- Boyer, J.L., et al. Am. J. Physiol. Gastrointest. Liver Physiol. 290 (6), G1124-G1130 (2006)
- Lim, J., et al. Cell 125(4):801-814(2006)