

LXN Antibody
Affinity Purified Rabbit Polyclonal Antibody (Pab)
Catalog # AP9861a**Specification**

LXN Antibody - Product Information

Application	FC, IHC-P, WB,E
Primary Accession	Q9BS40
Reactivity	Human
Host	Rabbit
Clonality	Polyclonal
Isotype	Rabbit IgG
Calculated MW	25750

LXN Antibody - Additional Information**Gene ID** 56925**Other Names**

Latexin, Endogenous carboxypeptidase inhibitor, ECI, Protein MUM, Tissue carboxypeptidase inhibitor, TCI, LXN

Target/Specificity

This LXN antibody is generated from rabbits immunized with human LXN recombinant protein.

Dilution

FC~~1:10~50

IHC-P~~1:50~100

WB~~1:1000

E~~Use at an assay dependent concentration.

Format

Purified polyclonal antibody supplied in PBS with 0.09% (W/V) sodium azide. This antibody is purified through a protein A column, followed by peptide affinity purification.

Storage

Maintain refrigerated at 2-8°C for up to 2 weeks. For long term storage store at -20°C in small aliquots to prevent freeze-thaw cycles.

Precautions

LXN Antibody is for research use only and not for use in diagnostic or therapeutic procedures.

LXN Antibody - Protein Information**Name** LXN**Function** Hardly reversible, non-competitive, and potent inhibitor of CPA1, CPA2 and CPA4. May play a role in inflammation.

Cellular Location

Cytoplasm.

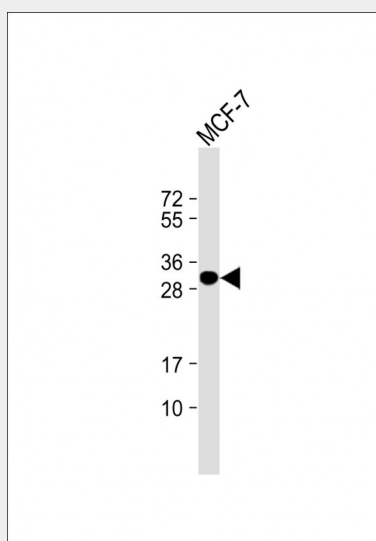
Tissue Location

Highly expressed in heart, prostate, ovary, kidney, pancreas, and colon, moderate or low in other tissues including brain

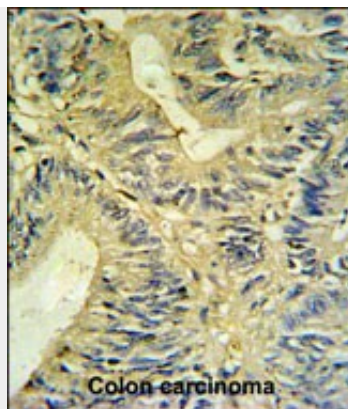
LXN Antibody - Protocols

Provided below are standard protocols that you may find useful for product applications.

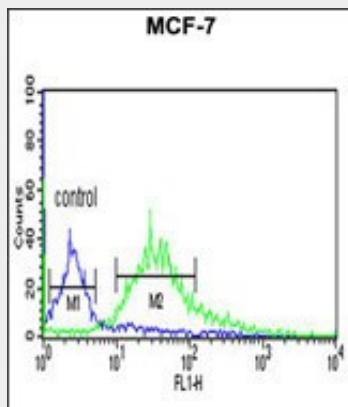
- [Western Blot](#)
- [Blocking Peptides](#)
- [Dot Blot](#)
- [Immunohistochemistry](#)
- [Immunofluorescence](#)
- [Immunoprecipitation](#)
- [Flow Cytometry](#)
- [Cell Culture](#)

LXN Antibody - Images

Anti-LXN Antibody at 1:1000 dilution + MCF-7 whole cell lysate Lysates/proteins at 20 µg per lane. Secondary Goat Anti-Rabbit IgG, (H+L), Peroxidase conjugated at 1/10000 dilution. Predicted band size : 26 kDa Blocking/Dilution buffer: 5% NFDM/TBST.



LXN Antibody (Cat. #AP9861a) IHC analysis in formalin fixed and paraffin embedded colon carcinoma followed by peroxidase conjugation of the secondary antibody and DAB staining. This data demonstrates the use of the LXN Antibody for immunohistochemistry. Clinical relevance has not been evaluated.



LXN Antibody (Cat. #AP9861a) flow cytometric analysis of MCF-7 cells (right histogram) compared to a negative control cell (left histogram). FITC-conjugated goat-anti-rabbit secondary antibodies were used for the analysis.

LXN Antibody - Background

LXN encodes the only known protein inhibitor of zinc-dependent metallopeptidases.

LXN Antibody - References

- Pallares, I., et al. Proc. Natl. Acad. Sci. U.S.A. 102(11):3978-3983(2005)
Liu, Q., et al. Mol. Biol. Rep. 27(4):241-246(2000)