

**CDH20 Antibody (N-term)**  
**Affinity Purified Rabbit Polyclonal Antibody (Pab)**  
**Catalog # AP9870a**

**Specification**

---

**CDH20 Antibody (N-term) - Product Information**

Application	WB, FC,E
Primary Accession	<a href="#">Q9HBT6</a>
Other Accession	<a href="#">Q5DWV1</a> , <a href="#">Q9Z0M3</a>
Reactivity	Human
Predicted	Mouse, Rat
Host	Rabbit
Clonality	Polyclonal
Isotype	Rabbit IgG
Antigen Region	111-140

**CDH20 Antibody (N-term) - Additional Information**

**Gene ID** 28316

**Other Names**

Cadherin-20, CDH20, CDH7L3

**Target/Specificity**

This CDH20 antibody is generated from rabbits immunized with a KLH conjugated synthetic peptide between 111-140 amino acids from the N-terminal region of human CDH20.

**Dilution**

WB~~1:1000

FC~~1:10~50

E~~Use at an assay dependent concentration.

**Format**

Purified polyclonal antibody supplied in PBS with 0.09% (W/V) sodium azide. This antibody is purified through a protein A column, followed by peptide affinity purification.

**Storage**

Maintain refrigerated at 2-8°C for up to 2 weeks. For long term storage store at -20°C in small aliquots to prevent freeze-thaw cycles.

**Precautions**

CDH20 Antibody (N-term) is for research use only and not for use in diagnostic or therapeutic procedures.

**CDH20 Antibody (N-term) - Protein Information**

**Name** CDH20

**Synonyms** CDH7L3

**Function** Cadherins are calcium-dependent cell adhesion proteins. They preferentially interact with themselves in a homophilic manner in connecting cells; cadherins may thus contribute to the sorting of heterogeneous cell types.

**Cellular Location**

Cell membrane; Single-pass type I membrane protein

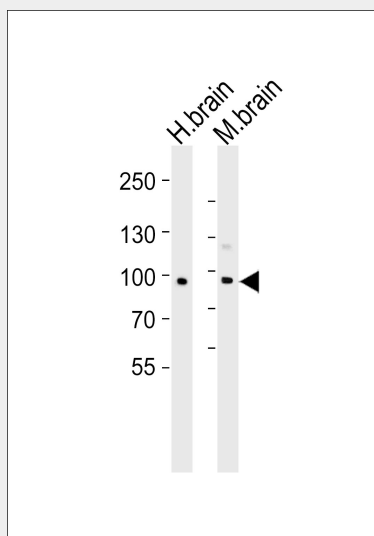
**Tissue Location**

Expressed in placenta, adult brain, and fetal brain

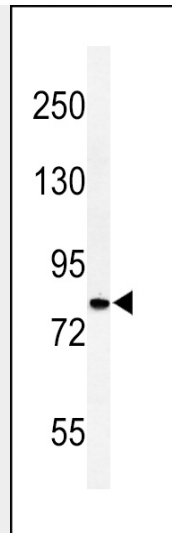
**CDH20 Antibody (N-term) - Protocols**

Provided below are standard protocols that you may find useful for product applications.

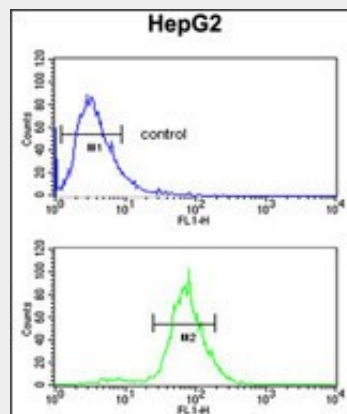
- [Western Blot](#)
- [Blocking Peptides](#)
- [Dot Blot](#)
- [Immunohistochemistry](#)
- [Immunofluorescence](#)
- [Immunoprecipitation](#)
- [Flow Cytometry](#)
- [Cell Culture](#)

**CDH20 Antibody (N-term) - Images**

Western blot analysis of lysates from human brain and mouse brain tissue lysate (from left to right), using CDH20 Antibody (N-term) (Cat. #AP9870a). AP9870a was diluted at 1:1000 at each lane. A goat anti-rabbit IgG H&L (HRP) at 1:5000 dilution was used as the secondary antibody. Lysates at 35 µg per lane.



Western blot analysis of CDH20 Antibody (N-term) (Cat. #AP9870a) in HepG2 cell line lysates (35ug/lane). CDH20 (arrow) was detected using the purified Pab.



CDH20 Antibody (N-term) (Cat. #AP9870a) flow cytometric analysis of HepG2 cells (bottom histogram) compared to a negative control cell (top histogram). FITC-conjugated goat-anti-rabbit secondary antibodies were used for the analysis.

### CDH20 Antibody (N-term) - Background

This gene is a type II classical cadherin from the cadherin superfamily and one of three cadherin 7-like genes located in a cluster on chromosome 18. The encoded membrane protein is a calcium dependent cell-cell adhesion glycoprotein comprised of five extracellular cadherin repeats, a transmembrane region and a highly conserved cytoplasmic tail. Type II (atypical) cadherins are defined based on their lack of a HAV cell adhesion recognition sequence specific to type I cadherins. Since disturbance of intracellular adhesion is a prerequisite for invasion and metastasis of tumor cells, cadherins are considered prime candidates for tumor suppressor genes.

### CDH20 Antibody (N-term) - References

Kools, P., et al. Genomics 68(3):283-295(2000)