

PXMP2 Antibody (Center)
Affinity Purified Rabbit Polyclonal Antibody (Pab)
Catalog # AP9872c

Specification

PXMP2 Antibody (Center) - Product Information

Application	FC, WB,E
Primary Accession	Q9NR77
Reactivity	Human
Host	Rabbit
Clonality	Polyclonal
Isotype	Rabbit IgG
Calculated MW	22253
Antigen Region	40-68

PXMP2 Antibody (Center) - Additional Information

Gene ID 5827

Other Names

Peroxisomal membrane protein 2, 22 kDa peroxisomal membrane protein, PXMP2, PMP22

Target/Specificity

This PXMP2 antibody is generated from rabbits immunized with a KLH conjugated synthetic peptide between 40-68 amino acids from the Central region of human PXMP2.

Dilution

FC~~1:10~50

WB~~1:1000

E~~Use at an assay dependent concentration.

Format

Purified polyclonal antibody supplied in PBS with 0.09% (W/V) sodium azide. This antibody is purified through a protein A column, followed by peptide affinity purification.

Storage

Maintain refrigerated at 2-8°C for up to 2 weeks. For long term storage store at -20°C in small aliquots to prevent freeze-thaw cycles.

Precautions

PXMP2 Antibody (Center) is for research use only and not for use in diagnostic or therapeutic procedures.

PXMP2 Antibody (Center) - Protein Information

Name PXMP2

Synonyms PMP22

Function Seems to be involved in pore-forming activity and may contribute to the unspecific permeability of the peroxisomal membrane.

Cellular Location

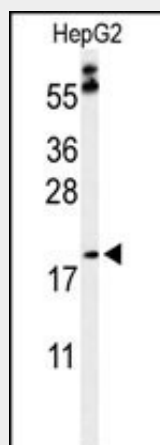
Peroxisome membrane; Multi-pass membrane protein.

PXMP2 Antibody (Center) - Protocols

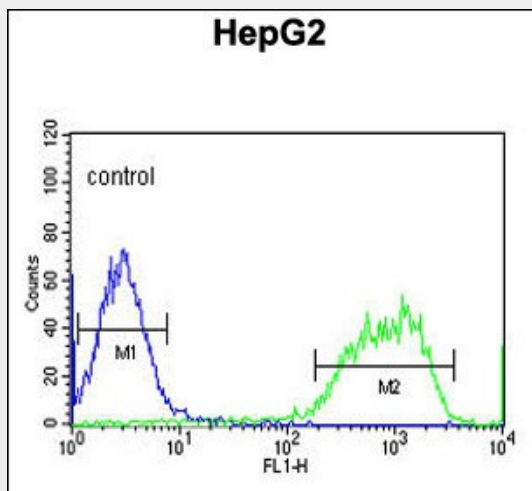
Provided below are standard protocols that you may find useful for product applications.

- [Western Blot](#)
- [Blocking Peptides](#)
- [Dot Blot](#)
- [Immunohistochemistry](#)
- [Immunofluorescence](#)
- [Immunoprecipitation](#)
- [Flow Cytometry](#)
- [Cell Culture](#)

PXMP2 Antibody (Center) - Images



Western blot analysis of PXMP2 Antibody (Center) (Cat. #AP9872c) in HepG2 cell line lysates (35ug/lane). PXMP2 (arrow) was detected using the purified Pab.



PXMP2 Antibody (Center) (Cat. #AP9872c) flow cytometric analysis of HepG2 cells (right histogram) compared to a negative control cell (left histogram). FITC-conjugated goat-anti-rabbit secondary antibodies were used for the analysis.

PXMP2 Antibody (Center) - References

Nestler, M., et al. Mol. Cell. Biochem. 287 (1-2), 147-155 (2006)

Brosius, U., et al. J. Biol. Chem. 277(1):774-784(2002)

Sacksteder, K.A., et al. J. Cell Biol. 148(5):931-944(2000)