

FASTKD2 Antibody (Center)
Affinity Purified Rabbit Polyclonal Antibody (Pab)
Catalog # AP9877c**Specification**

FASTKD2 Antibody (Center) - Product Information

Application	WB, IHC-P,E
Primary Accession	Q9NYY8
Reactivity	Human
Host	Rabbit
Clonality	Polyclonal
Isotype	Rabbit IgG
Calculated MW	81463
Antigen Region	318-347

FASTKD2 Antibody (Center) - Additional Information**Gene ID** 22868**Other Names**

FAST kinase domain-containing protein 2, FASTKD2, KIAA0971

Target/Specificity

This FASTKD2 antibody is generated from rabbits immunized with a KLH conjugated synthetic peptide between 318~347 amino acids from the Central region of human FASTKD2.

Dilution

WB~~1:1000

IHC-P~~1:50~100

Format

Purified polyclonal antibody supplied in PBS with 0.09% (W/V) sodium azide. This antibody is purified through a protein A column, followed by peptide affinity purification.

Storage

Maintain refrigerated at 2-8°C for up to 2 weeks. For long term storage store at -20°C in small aliquots to prevent freeze-thaw cycles.

Precautions

FASTKD2 Antibody (Center) is for research use only and not for use in diagnostic or therapeutic procedures.

FASTKD2 Antibody (Center) - Protein Information**Name** FASTKD2 {ECO:0000303|PubMed:27667664, ECO:0000312|HGNC:HGNC:29160}**Function** Plays an important role in assembly of the mitochondrial large ribosomal subunit (PubMed:[25683715](#)). As a component of a functional protein-RNA module, consisting of RCC1L,

NGRN, RPUSD3, RPUSD4, TRUB2, FASTKD2 and 16S mitochondrial ribosomal RNA (16S mt- rRNA), controls 16S mt-rRNA abundance and is required for intra- mitochondrial translation (PubMed:[27667664](#), PubMed:[25683715](#), PubMed:[26370583](#)). May play a role in mitochondrial apoptosis.

Cellular Location

Mitochondrion matrix, mitochondrion nucleoid Mitochondrion matrix. Note=Localizes to mitochondrial RNA granules found in close proximity to the mitochondrial nucleoids.

Tissue Location

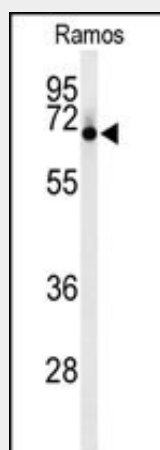
Expression detected in spleen, thymus, testis, ovary, colon, heart, smooth muscle, kidney, brain, lung, liver and white adipose tissue with highest expression in heart, smooth muscle and thyroid.

FASTKD2 Antibody (Center) - Protocols

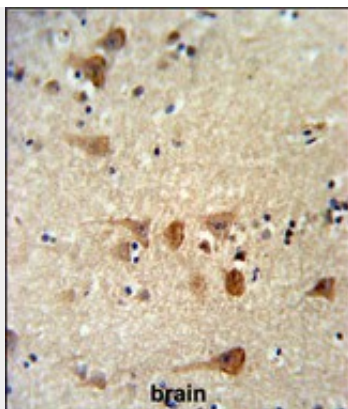
Provided below are standard protocols that you may find useful for product applications.

- [Western Blot](#)
- [Blocking Peptides](#)
- [Dot Blot](#)
- [Immunohistochemistry](#)
- [Immunofluorescence](#)
- [Immunoprecipitation](#)
- [Flow Cytometry](#)
- [Cell Culture](#)

FASTKD2 Antibody (Center) - Images



Western blot analysis of FASTKD2 Antibody (Center) (Cat. #AP9877c) in Ramos cell line lysates (35ug/lane). FASTKD2 (arrow) was detected using the purified Pab.



FASTKD2 Antibody (Center) (Cat. #AP9877c) IHC analysis in formalin fixed and paraffin embedded brain tissue followed by peroxidase conjugation of the secondary antibody and DAB staining. This data demonstrates the use of the FASTKD2 Antibody (Center) for immunohistochemistry. Clinical relevance has not been evaluated.

FASTKD2 Antibody (Center) - Background

This gene encodes a protein that is localized in the mitochondrial inner compartment and that may play a role in mitochondrial apoptosis. Nonsense mutations have been reported to result in cytochrome c oxidase deficiency.

FASTKD2 Antibody (Center) - References

Ghezzi, D., et al. Am. J. Hum. Genet. 83(3):415-423(2008)
Hu, R.M., et al. Proc. Natl. Acad. Sci. U.S.A. 97(17):9543-9548(2000)

FASTKD2 Antibody (Center) - Citations

- [Dehydroepiandrosterone-Induced Changes in Mitochondrial Proteins Contribute to Phenotypic Alterations in Hepatoma Cells.](#)