

**CDC45L Antibody (Center)**  
**Affinity Purified Rabbit Polyclonal Antibody (Pab)**  
**Catalog # AP9881c****Specification**

---

**CDC45L Antibody (Center) - Product Information**

Application	FC, IHC-P, WB,E
Primary Accession	<a href="#">O75419</a>
Reactivity	Human
Host	Rabbit
Clonality	Polyclonal
Isotype	Rabbit IgG
Calculated MW	65569
Antigen Region	236-263

**CDC45L Antibody (Center) - Additional Information****Gene ID** 8318**Other Names**

Cell division control protein 45 homolog, PORC-PI-1, CDC45, CDC45L, CDC45L2

**Target/Specificity**

This CDC45L antibody is generated from rabbits immunized with a KLH conjugated synthetic peptide between 236-263 amino acids from the Central region of human CDC45L.

**Dilution**

FC~~1:10~50

IHC-P~~1:50~100

WB~~1:1000

E~~Use at an assay dependent concentration.

**Format**

Purified polyclonal antibody supplied in PBS with 0.09% (W/V) sodium azide. This antibody is purified through a protein A column, followed by peptide affinity purification.

**Storage**

Maintain refrigerated at 2-8°C for up to 2 weeks. For long term storage store at -20°C in small aliquots to prevent freeze-thaw cycles.

**Precautions**

CDC45L Antibody (Center) is for research use only and not for use in diagnostic or therapeutic procedures.

**CDC45L Antibody (Center) - Protein Information****Name** CDC45 ([HGNC:1739](#))

**Synonyms** CDC45L, CDC45L2

**Function** Required for initiation of chromosomal DNA replication. Core component of CDC45-MCM-GINS (CMG) helicase, the molecular machine that unwinds template DNA during replication, and around which the replisome is built.

**Cellular Location**

Nucleus. Chromosome. Note=Associates with chromatin

**Tissue Location**

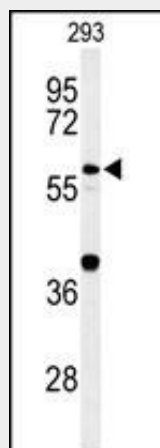
Widely expressed, highest levels are found in adult testis and thymus and in fetal liver

**CDC45L Antibody (Center) - Protocols**

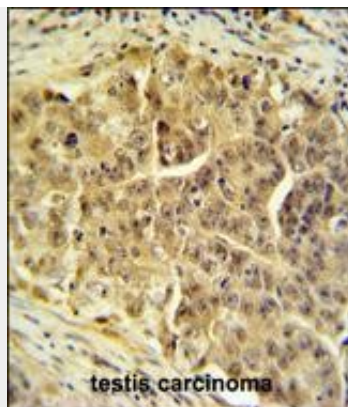
Provided below are standard protocols that you may find useful for product applications.

- [Western Blot](#)
- [Blocking Peptides](#)
- [Dot Blot](#)
- [Immunohistochemistry](#)
- [Immunofluorescence](#)
- [Immunoprecipitation](#)
- [Flow Cytometry](#)
- [Cell Culture](#)

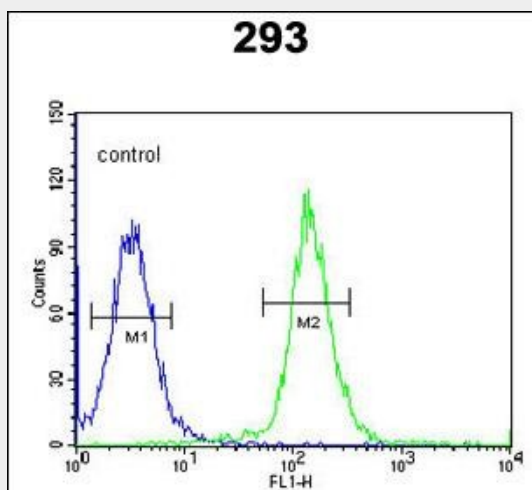
**CDC45L Antibody (Center) - Images**



Western blot analysis of CDC45L Antibody (Center) (Cat. #AP9881c) in 293 cell line lysates (35ug/lane). CDC45L (arrow) was detected using the purified Pab.



CDC45L Antibody (Center) (Cat. #AP9881c) IHC analysis in formalin fixed and paraffin embedded testis tissue followed by peroxidase conjugation of the secondary antibody and DAB staining. This data demonstrates the use of the CDC45L Antibody (Center) for immunohistochemistry. Clinical relevance has not been evaluated.



CDC45L Antibody (Center) (Cat. #AP9881c) flow cytometric analysis of 293 cells (right histogram) compared to a negative control cell (left histogram). FITC-conjugated goat-anti-rabbit secondary antibodies were used for the analysis.

### **CDC45L Antibody (Center) - Background**

The protein encoded by this gene was identified by its strong similarity with *Saccharomyces cerevisiae* Cdc45, an essential protein required to the initiation of DNA replication. Cdc45 is a member of the highly conserved multiprotein complex including Cdc6/Cdc18, the minichromosome maintenance proteins (MCMs) and DNA polymerase, which is important for early steps of DNA replication in eukaryotes. This protein has been shown to interact with MCM7 and DNA polymerase alpha. Studies of the similar gene in *Xenopus* suggested that this protein play a pivotal role in the loading of DNA polymerase alpha onto chromatin. Multiple polyadenylation sites of this gene are reported.

### **CDC45L Antibody (Center) - References**

- Chowdhury, A., et al. *Mol. Cell. Biol.* 30(6):1495-1507(2010)
- Im, J.S., et al. *Proc. Natl. Acad. Sci. U.S.A.* 106(37):15628-15632(2009)
- Ballabeni, A., et al. *J. Biol. Chem.* 284(5):3028-3036(2009)
- Enjuanes, A., et al. *Cancer Res.* 68(24):10178-10186(2008)
- Hoskins, J.M., et al. *Clin. Cancer Res.* 14(6):1788-1796(2008)