

GTSE1 Antibody (C-term)
Affinity Purified Rabbit Polyclonal Antibody (Pab)
Catalog # AP9882B**Specification**

GTSE1 Antibody (C-term) - Product Information

Application	FC, IHC-P, WB,E
Primary Accession	Q9NYZ3
Other Accession	Q8R080
Reactivity	Human
Predicted	Mouse
Host	Rabbit
Clonality	Polyclonal
Isotype	Rabbit IgG
Antigen Region	690-717

GTSE1 Antibody (C-term) - Additional Information**Gene ID** 51512**Other Names**

G2 and S phase-expressed protein 1, GTSE-1, Protein B99 homolog, GTSE1

Target/Specificity

This GTSE1 antibody is generated from rabbits immunized with a KLH conjugated synthetic peptide between 690-717 amino acids from the C-terminal region of human GTSE1.

Dilution

FC~~1:10~50

IHC-P~~1:10~50

WB~~1:1000

E~~Use at an assay dependent concentration.

Format

Purified polyclonal antibody supplied in PBS with 0.09% (W/V) sodium azide. This antibody is purified through a protein A column, followed by peptide affinity purification.

Storage

Maintain refrigerated at 2-8°C for up to 2 weeks. For long term storage store at -20°C in small aliquots to prevent freeze-thaw cycles.

Precautions

GTSE1 Antibody (C-term) is for research use only and not for use in diagnostic or therapeutic procedures.

GTSE1 Antibody (C-term) - Protein Information**Name** GTSE1 ([HGNC:13698](#))

Function May be involved in p53-induced cell cycle arrest in G2/M phase by interfering with microtubule rearrangements that are required to enter mitosis. Overexpression delays G2/M phase progression.

Cellular Location

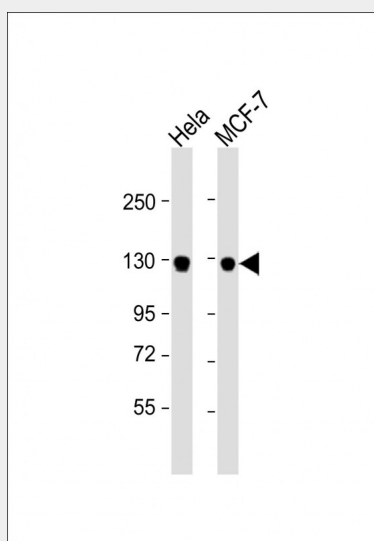
Cytoplasm, cytoskeleton. Note=Associated with microtubules

GTSE1 Antibody (C-term) - Protocols

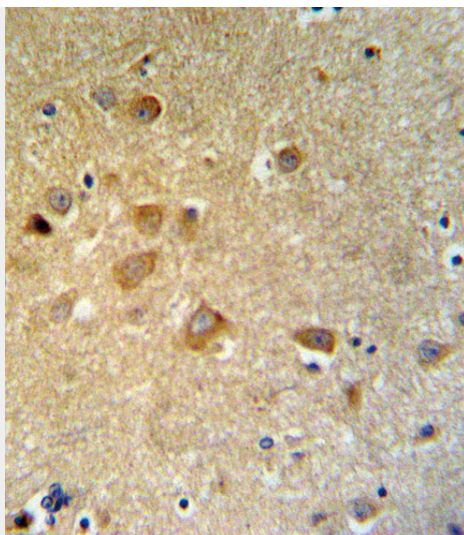
Provided below are standard protocols that you may find useful for product applications.

- [Western Blot](#)
- [Blocking Peptides](#)
- [Dot Blot](#)
- [Immunohistochemistry](#)
- [Immunofluorescence](#)
- [Immunoprecipitation](#)
- [Flow Cytometry](#)
- [Cell Culture](#)

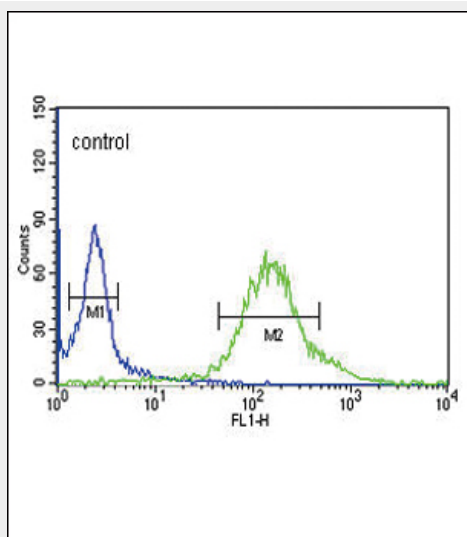
GTSE1 Antibody (C-term) - Images



All lanes : Anti-GTSE1 Antibody (C-term) at 1:1000 dilution Lane 1: HeLa whole cell lysate Lane 2: MCF-7 whole cell lysate Lysates/proteins at 20 µg per lane. Secondary Goat Anti-Rabbit IgG, (H+L), Peroxidase conjugated at 1/10000 dilution. Predicted band size : 77 kDa Blocking/Dilution buffer: 5% NFDM/TBST.



GTSE1 Antibody (C-term) (Cat. #AP9882b) IHC analysis in formalin fixed and paraffin embedded brain tissue followed by peroxidase conjugation of the secondary antibody and DAB staining. This data demonstrates the use of the GTSE1 Antibody (C-term) for immunohistochemistry. Clinical relevance has not been evaluated.



GTSE1 Antibody (C-term) (Cat. #AP9882b) flow cytometric analysis of Hela cells (right histogram) compared to a negative control cell (left histogram). FITC-conjugated goat-anti-rabbit secondary antibodies were used for the analysis.

GTSE1 Antibody (C-term) - Background

GTSE1 is only expressed in the S and G2 phases of the cell cycle, where it colocalizes with cytoplasmic tubulin and microtubules. In response to DNA damage, the encoded protein accumulates in the nucleus and binds the tumor suppressor protein p53, shuttling it out of the nucleus and repressing its ability to induce apoptosis.

GTSE1 Antibody (C-term) - References

Bublik, D.R., et al. J. Biol. Chem. 285(8):5274-5281(2010)
Beausoleil, S.A., et al. Nat. Biotechnol. 24(10):1285-1292(2006)
Kapranov, P., et al. Genome Res. 15(7):987-997(2005)
Cheng, J., et al. Science 308(5725):1149-1154(2005)

Beausoleil, S.A., et al. Proc. Natl. Acad. Sci. U.S.A. 101(33):12130-12135(2004)